

COPPER TUBING HANGERS

Fig. CT-128R

Rod Threaded Ceiling Flange

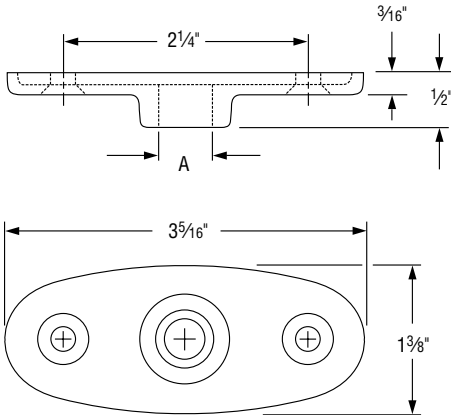
Size Range: $\frac{3}{8}$ " and $\frac{1}{2}$ "

Material: Malleable iron

Finish: Copper plated

Service: Recommended for attachment to wood beams or ceiling.

Ordering: Specify rod size, figure number, name.



**FIG. CT-128R:
LOADS (LBS) • WEIGHT (LBS) • DIMENSIONS (IN)**

Rod Size A	Max Load	Weight	Screws	
			Quantity	Size No.
$\frac{3}{8}$	180	0.16	2	12
$\frac{1}{2}$				

Fig. CT-138R

Extension Split Tubing Clamp (Rod Threaded)

Size Range: $\frac{1}{2}$ " through 2"

Material: Malleable iron

Finish: Copper plated

Service: Recommended for suspension of non-insulated **stationary** copper tube.

Approvals: Complies with Federal Specification A-A-1192A (Type 12)

WW-H-171-E (Type 25), ANSI/MSS SP-69 and MSS SP-58 (Type 12).

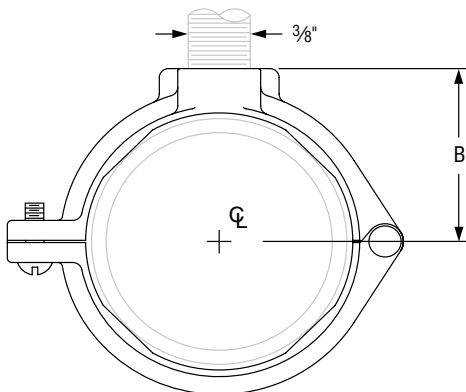
Installation:

- Permanent installation of clamp may be made before the tubing is placed in position.
- Final installation is attained by swinging the lower portion of the hinged clamp up under the tubing and inserting a single screw securely.

Features:

- Hinged design provides for economical installation.
- Designed to provide a tight fit on copper tubing.

Ordering: Specify nominal tube size, figure number, name.



**FIG. CT-138R:
LOADS (LBS) • WEIGHT (LBS) • DIMENSIONS (IN)**

Tube Size	Max Load	Weight	B
$\frac{1}{2}$	180	0.10	$\frac{3}{4}$
$\frac{3}{4}$		0.12	$\frac{7}{8}$
1		0.14	1
$1\frac{1}{4}$		0.18	$1\frac{1}{8}$
$1\frac{1}{2}$		0.22	$1\frac{1}{4}$
2		0.36	$1\frac{9}{16}$