

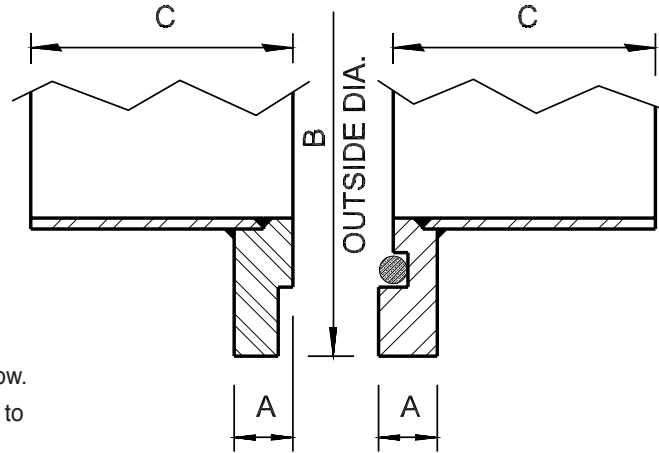
METAL TO METAL CONNECTORS

304L & 316L STAINLESS STEEL

A Metal to Metal Connector consists of one pair of stub ends (one male and one female) and a 1/8" diameter 60 durometer neoprene o-ring.

Metal to Metal Connectors can be joined by means of a Felker Metal to Metal Clamp or by using two standard Felker Back-Up Flanges.

- Manufactured in accordance to ASTM A-774 specifications.
- OD and wall thickness are given in inches.
- Sizes larger than 36" and special lengths are available upon request.
- Manufactured to MSS stub end length dimensions.
- METAL TO METAL SEATING - No gasket protrusion to restrict flow.
- ADAPTERS AVAILABLE - Convert flanges on pumps and valves to mate with metal to metal connectors.



NOMINAL PIPE SIZE	OD	A	B	C	A-774 METAL TO METAL CONNECTORS			A-774 GAUGE METAL TO METAL CONNECTORS				
					SCH5S	SCH10S	SCH40S	14GA .078	12GA .109	11GA .125	10GA .140	8GA .172
1	1.315	.312	2.500	2.000	.065 .45	.109 .55	.133 1.20	-	-	-	-	-
1 1/2	1.900	.312	3.250	2.000	.065 .65	.109 .80	.145 1.80	-	-	-	-	-
2	2.375	.312	3.750	2.500	.065 .90	.109 1.10	.154 1.90	-	-	-	-	-
2 1/2	2.875	.312	4.750	2.500	.083 1.00	.120 1.90	.203 2.00	-	-	-	-	-
3	3.500	.312	4.750	2.500	.083 1.30	.120 1.60	.216 2.30	SEE SCH5S	SEE SCH10S	-	-	-
4	4.500	.312	5.750	3.000	.083 1.90	.120 2.30	.237 3.60	SEE SCH5S	SEE SCH10S	-	-	-
5	5.563	.312	6.750	3.000	.109 2.50	.134 3.15	.258 4.90	-	SEE SCH5S	SEE SCH10S	-	-
6	6.625	.312	7.750	3.500	.109 3.40	.134 3.75	.280 6.60	-	SEE SCH5S	SEE SCH10S	-	-
8	8.625	.312	10.000	4.000	.109 5.15	.148 6.15	.322 11.25	-	SEE SCH5S	5.60	SEE SCH10S	-
10	10.750	.437	12.000	5.000	.134 8.90	.165 10.25	.365 19.40	-	7.71	SEE SCH5S	9.20	10.70
12	12.750	.437	14.250	6.000	.156 14.15	.180 15.65	.375 28.50	-	10.96	12.00	13.10	SEE SCH10S
14	14.000	.560	16.500	6.000	.156 19.50	.188 22.70	.375 36.20	-	15.99	17.20	18.30	20.70
16	16.000	.622	18.500	6.000	.165 23.80	.188 25.65	.375 41.20	-	19.00	20.40	21.70	24.40
18	18.000	.740	20.500	6.000	.165 27.20	.188 29.30	.375 57.00	-	21.80	23.40	24.80	27.90
20	20.000	.740	22.500	6.000	.188 35.50	.218 38.30	.375 62.00	-	27.10	28.80	30.40	33.80
24	24.000	.740	26.500	6.000	.218 45.10	.250 57.50	.375 72.50	-	31.00	33.10	35.00	39.10
30	30.000	.810	33.500	6.000	.250 77.50	.312 87.10	.375 112.00	-	54.90	57.50	59.90	65.00
36	36.000	.810	39.500	6.000	-	-	-	-	-	-	75.00	85.00

BLUE = WALL THICKNESS
BLACK = POUNDS

