

FIG. 7250

Suction Diffuser

The Fig. 7250 Gruvlok Suction Diffuser protects your pump and saves you money on your overall installed cost while offering you these advantages:

SAVES SPACE:

Mounts directly to the pump inlet.

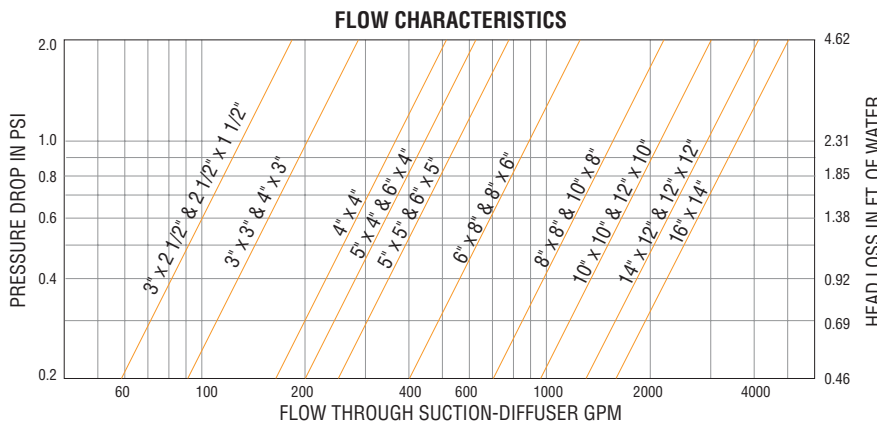
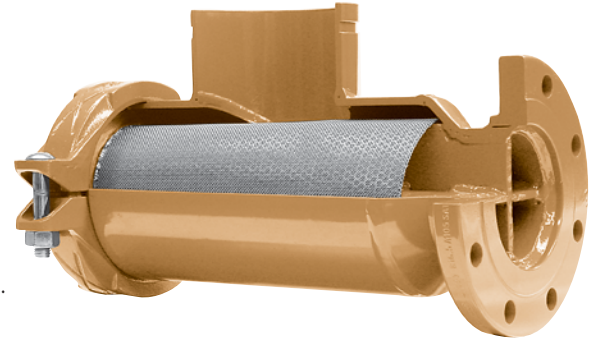
SAVES LABOR AND MATERIAL:

The lightweight compact design is easily installed with no need for welding.

IMPROVES PUMP PERFORMANCE:

The one-piece diffuser vane and strainer design reduces flow turbulence, streamlines the flow, and traps any hazardous foreign material to better protect your pump.

PIPE SUPPORT LUG STANDARD



FLOW DATA:

NOTE 1. Most U.S. piping engineers specify system startup instructions for new systems which include removing the pre-filter screen after system flushing of the main piping before the system is put into normal operation. Flow data values are based on flow of clean water at ambient temperatures. The pressure drop across the diffuser basket strainer, 50% clogged, is approximately twice as great as that of a clean strainer.

NOTE 2. Suction Diffuser baskets need a routine maintenance program to maintain system efficiency.

MATERIAL SPECIFICATIONS

ANSI BOLTS & HEAVY HEX NUTS:

Heat treated, oval neck track head bolts conforming to ASTM A 183 Grade 2 with a minimum tensile strength of 110,000 psi and heavy hex nuts of carbon steel conforming to ASTM A 563. Bolts and nuts are provided zinc electroplated as standard.

METRIC BOLTS & HEAVY HEX NUTS:

Heat treated, zinc electroplated oval-neck track head bolts made of carbon steel with mechanical properties per ISO 898-1 Class 8.8. Hex nuts and bolts are zinc electroplated followed by a yellow chromate dip.

STAINLESS STEEL BOLTS & NUTS:

Stainless steel bolts and nuts are also available. Contact an Anvil Representative for more information

HOUSING:

Sizes 2 1/2" x 2 1/2" through 10" x 8":

Carbon steel Schedule 40 conforming to ASTM A 53, Grade B.

Sizes 10" x 10" through 16" x 14":

Carbon steel .375" standard weight wall conforming to ASTM A 53, Grade B.

DIFFUSER BASKET:

Stainless steel type 304, #16 perforated plate with 3/16" diameter holes. (51% open area). Pre-Filter: Stainless steel type 304 screen - 16 mesh. (removable).

COUPLINGS:

Ductile Iron conforming to ASTM A 536, Grade 65-45-12.

FLANGES:

Carbon steel class 150# conforming to ASME B 16.5.

DRAIN & GAGE PLUGS:

Carbon steel square head plugs conforming to ASME B16.11.

COATINGS:

Rust inhibiting paint Color: ORANGE (standard)
Hot Dipped Zinc Galvanized (optional)
Other Colors Available (IE: RAL3000 and RAL9000)
For other Coating requirements contact an Anvil Representative.

GASKETS: Materials

Properties as designated in accordance with ASTM D 2000

Grade "E" EPDM (Green color code)

-40°F to 230°F (Service Temperature Range)(-40°C to 110°C)
Recommended for water service, diluted acids, alkalies solutions, oil-free air and many other chemical services.
NOT FOR USE IN PETROLEUM APPLICATIONS.

Grade "EP" EPDM (Green and Red color code)

-40°F to 250°F (Service Temperature Range)(-40°C to 121°C)
Recommended for water service, diluted acids, alkalies solutions, oil-free air and many other chemical services.
NOT FOR USE IN PETROLEUM APPLICATIONS.

For hot water applications the use of Gruvlok Extreme Temperature lubricant is recommended. NSF-61 Certified for cold and hot water applications up through 12".

Grade "T" Nitrile (Orange color code) -20°F to 180°F

(Service Temperature Range)(-29°C to 82°C)
Recommended for petroleum applications. air with oil vapors and vegetable and mineral oils.
NOT FOR USE IN HOT WATER OR HOT AIR.