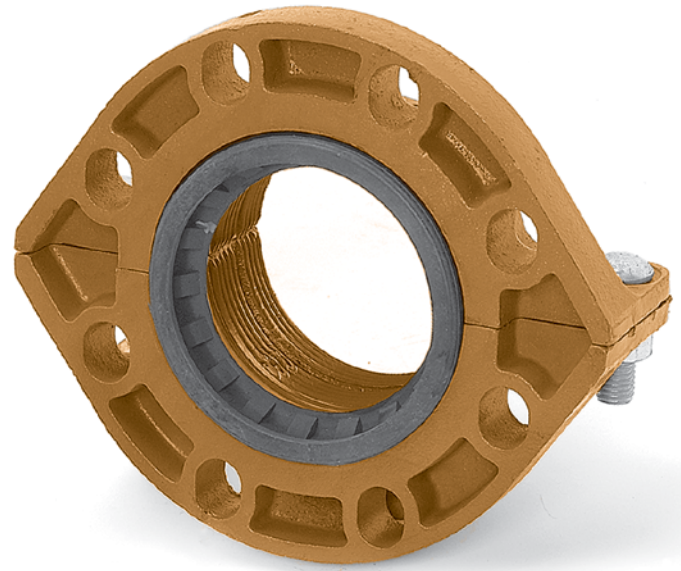


FIG. 7312

HDPE Flange Adapter

The Gruvlok® Figure 7312 forms a cost-effective, easy-to-assemble mechanical joint between HDPE (high density polyethylene) pipe and fittings and ANSI Class 125 or Class 150 piping components without the need for costly fusion equipment. The flanged couplings are designed for wall thickness' SDR 32.5 to 7.3 HDPE pipe and fittings conforming to ASTM D 2447, D 3000, D 3035, or F 174. Each coupling uses two bolts to drive the sharply machined housing teeth into the outside of the pipe. The teeth are arranged in two banks, each bank consisting of at least three rows of spiral teeth that effectively grip the pipe, providing a secure mechanical joint with pressure capabilities exceeding that of the HDPE pipe itself. The banks of teeth are positioned away from the gasket, enhancing the sealing ability of the gaskets throughout the entire operating temperature range.



MATERIAL SPECIFICATIONS

HOUSING:

Ductile Iron conforming to ASTM A 536, Grade 65-45-12

COATING:

Rust inhibiting paint – color: orange

Other Colors Available (IE: RAL3000 and RAL9000)

For other Coating requirements contact an Anvil Representative.

ANSI BOLTS & HEAVY HEX NUTS:

Heat treated, zinc electroplated, carbon steel oval-neck track bolts conforming to ASTM A 183. Zinc electroplated heavy hex nuts of carbon steel conforming to ASTM A 563 Grade A or Grade B, or J995 Grade 2.

GASKETS: Properties in accordance with ASTM D 2000

Grade E EPDM (Green color code)

Service Temperature Range: -30°F to 230°F (-34°C to 110°C).

Recommended for water service, dilute acids, alkaline solutions, oil free air and many chemical services.

NOT FOR USE IN PETROLEUM APPLICATIONS.

Grade T Nitrile (Orange color code)

Service Temperature Range: -20°F to 180°F (-29°C to 82°C).

Recommended for petroleum applications, air with oil vapor, vegetable and mineral oils.

NOT FOR USE WITH HOT WATER OR HOT AIR.

For specific chemical applications, reference the Gruvlok Gasket Recommendations section of the Gruvlok catalog.

WARNING:

1. Gruvlok products for HDPE pipe must be installed using Gruvlok Xtreme™ Temperature Lubricant.
2. The gasket temperature rating may exceed the manufacturer temperature rating for the HDPE pipe. Consult the HDPE pipe manufacturer for the temperature and pressure ratings.