

Fig. 104

Adjustable Swivel Ring, Split Ring Type

Size Range: 3/4" through 8"

Material: Malleable iron, carbon steel

Finish: Plain or Galvanized

Service: Recommended for suspension of non-insulated **stationary** pipe lines.

Maximum Temperature: 450° F

Approvals: Complies with Federal Specification A-A-1192A (Type 6) WW-H-171-E (Type 6), ANSI/MSS SP-69 and MSS SP-58 (Type 16).

Features:

- Labor-saving features in installation completely outweigh slight additional cost.
- Hanger may be installed prior to suspension of pipe.
- Off-center hinge provides seating for pipe during installation.
- Wedge-type locking pin is inseparably cast into hinged section, sizes 2 1/2" and larger.
- Adjustable swivel ring is self-locking; prevents loosening due to vibration; maintains proper pitch of pipe.
- Wire retaining ring prevents separation of swivel shank from pipe ring before installation.

Ordering: Specify pipe size, figure number, name and finish.

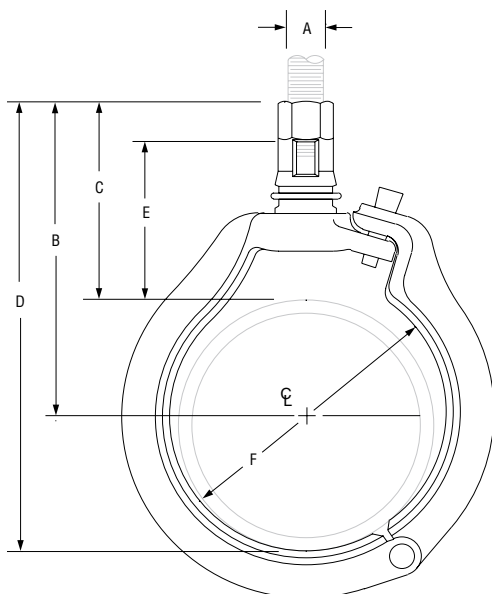


FIG. 104: LOADS (LBS) • WEIGHT (LBS) • DIMENSIONS (IN)

Pipe Size	Max Load	Weight	Rod Size A	B	C	D	E	Inside Dia. of Ring – F
3/4	300	0.31	3/8	2 7/8	2 3/8	3 7/16	1 15/16	1 3/16
1		0.32			2 1/4	3 9/16	1 3/4	1 7/16
1 1/4		0.34		3	2 3/16	3 7/8	1 11/16	1 13/16
1 1/2		0.41		3 3/8		4 1/8		2 1/16
2		0.48		3 1/2	2 5/16	4 11/16	1 13/16	2 1/2
2 1/2	500	0.58	1/2	3 15/16	2 1/2	5 3/8	1 7/8	3
3		1.00		4 3/8	2 5/8	6 1/8	2	3 3/4
4	900	1.70	5/8	5 13/16	3 9/16	8 1/16	2 7/8	4 13/16
5		2.50		6 3/8	3 5/8	9 3/16	2 15/16	5 15/16
6	1,300	3.80	3/4	7 5/8	4 5/16	10 15/16	3 1/2	7 1/16
8	1,800	6.10	7/8	9 5/8	4 7/8	13 1/2	3 7/8	9 1/16