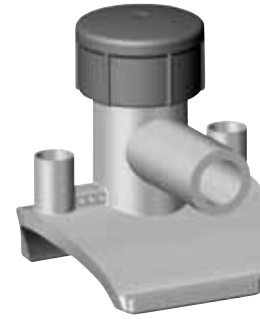


Electrofusion Fittings: Tapping Tees (EFTT) w/Butt Outlet



Call for availability of other sizes and dimensions.

4.7R = 4.7 Pin with Resistor

4.7S = 4.7 Solid Pin

(PE2406/PE2708) ELECTROFUSION TAPPING TEE

Outlet Size	Main Size	Cutter Size Material	Pin Type	Clamp Type	Part Number	Pack. Qty.	Wt.	CSA
1" IPS	1¼" IPS	0.8 / Steel	4.7 R	A	5757083	50	0.80	YES
1" IPS	1¼" IPS	0.8 / Steel	4.7 R	Underpart	10009388	50.	0.80.	YES
1" IPS	2" IPS	0.8 / Steel	4.7 R	B	5757150	40	0.85	YES
1" IPS	2" IPS	0.8 / Steel	4.7 R	UP	10009398			YES
1" IPS	3" IPS	0.8 / Steel	4.7 R	C	5757151	40	0.90	YES
1" IPS	3" IPS	0.8 / Steel	4.7 R	Underpart	10009399			YES
1" IPS	4" IPS	0.8 / Steel	4.7 R	D	5757152	30	1.00	YES
1" IPS	4" IPS	0.8 / Steel	4.7 R	Underpart	10009403			YES
1" IPS	6" IPS	0.8 / Steel	4.7 R	E	5757153	20	1.21	YES
1" IPS	6" IPS	0.8 / Steel	4.7 R	Underpart	10009408			YES
1" IPS	8-10" IPS	0.8 / Steel	4.7 R	H	5757157	40	0.80	YES
1¼" CTS	2" IPS	0.8 / Steel	4.7 R	B	5757086	40	0.84	-
1¼" CTS	4" IPS	0.8 / Steel	4.7 R	D	5757140	30	0.98	-
1¼" CTS	6" IPS	0.8 / Steel	4.7 R	E	5757142			-
1¼" CTS	8-10" IPS	0.8 / Steel	4.7 R	H	5757145	40	0.82	-

(PE3408/PE4710) ELECTROFUSION TAPPING TEE w/Butt Outlet & Steel Cutter

Outlet Size	Main Size	Cutter Size Material	Pin Type	Clamp Type	Part Number	Pack. Qty.	Wt.	AWWA
½" CTS	1¼" IPS	0.8 / Steel	4.7 R	A	10004749	50	0.80	-
½" CTS	2" IPS	0.8 / Steel	4.7 R	B	10004761	50	0.83	-
½" CTS	2" IPS	0.5 / Steel	4.7 R	B	call	-	-	-
½" CTS	2" IPS	0.8 / Steel	4.7 R	UP	10009389			-
½" CTS	3" IPS	0.5 / Steel	4.7 R	C	call	-	-	-
½" CTS	4" IPS	0.5 / Steel	4.7 R	D	call	-	-	-
½" CTS	6" IPS	0.5 / Steel	4.7 R	E	call	-	-	-
½" CTS	8-10" IPS	0.5 / Steel	4.7 S	H	call	-	-	-
½" IPS	1¼" IPS	0.5 / Steel	4.7 R	A	call	-	-	-
½" IPS	2" IPS	0.5 / Steel	4.7 R	B	call	-	-	-
½" IPS	3" IPS	0.5 / Steel	4.7 R	C	call	-	-	-
½" IPS	4" IPS	0.5 / Steel	4.7 R	D	call	-	-	-
½" IPS	6" IPS	0.5 / Steel	4.7 R	E	call	-	-	-
½" IPS	8-10" IPS	0.5 / Steel	4.7 R	H	call	-	-	-
¾" CTS	1¼" IPS	0.8 / Steel	4.7 R	A	call	-	-	-
¾" CTS	2" IPS	0.8 / Steel	4.7 R	B	call	-	-	-
¾" CTS	3" IPS	0.8 / Steel	4.7 R	C	call	-	-	-
¾" CTS	4" IPS	0.8 / Steel	4.7 R	D	call	-	-	-
¾" CTS	6" IPS	0.8 / Steel	4.7 R	E	call	-	-	-
¾" CTS	8-10" IPS	0.8 / Steel	4.7 R	H	call	-	-	-