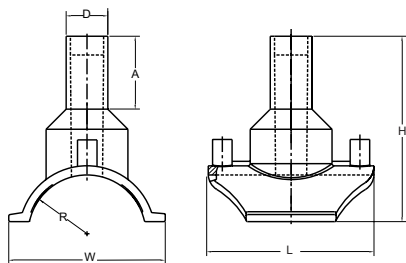
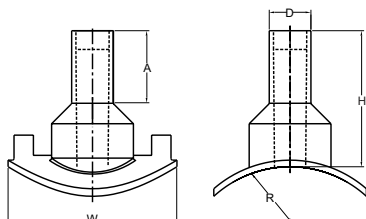


# Electrofusion Fittings: Branch Saddles

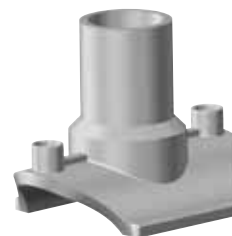


2" IPS to 6" DIPS



8" IPS to 12" DIPS

Branch Saddle w/1 1/4" Outlet



### BRANCH SADDLE DIMENSIONS: 2" OUTLET

Nominal Base Size	A	D	H	W	L
2" IPS	3.28	2.37	6.65	3.59	6.62
3" IPS	3.28	2.37	6.65	4.60	6.62
4" IPS/DIPS	3.28	2.37	7.27	6.26	6.62
6" IPS/DIPS	3.28	2.37	8.43	8.68	6.62
8" IPS/DIPS	3.28	2.37	5.29	6.75	*
10" IPS/DIPS	3.28	2.37	5.56	6.75	*
12" IPS/DIPS	3.28	2.37	5.73	6.75	*

### (PE3408/PE4710) ELECTROFUSION BRANCH SADDLES (full pressure)

Outlet Size	Main Size	Pin Type	Clamp Type	Part Number	Pack. Qty.	Wt.	AWWA
1 1/4" IPS	2" IPS	4.7 R	B	10004521	40	0.81	YES
1 1/4" IPS	3" IPS	4.7 R	C	10004523		0.26	YES
1 1/4" IPS	4" IPS/DIPS	4.7 R	D/L	10004531		1.09	YES
1 1/2" IPS	2" IPS	4.7 R	B	call	-	-	-
1 1/2" IPS	3" IPS	4.7 R	C	call	-	-	-
1 1/2" IPS	4" IPS/DIPS	4.7 R	D/L	call	-	-	-
2" IPS	2" IPS	4.7 R	B	10003536	30	0.90	YES
2" IPS	3" IPS	4.7 R	C	10004525	30	0.96	YES
2" IPS	4" IPS/DIPS	4.7 R	D/L	10003547	30	0.90	YES
2" IPS	6" IPS/DIPS	4.7 R	E/M	10004543	30	2.00	YES
2" IPS	8" IPS	4.7 R	H	10007711	30	1.16	YES
2" IPS	8" DIPS	4.7 S	H	10004508	30	1.16	YES
2" IPS	10" IPS	4.7 S	H	10004660	30	1.22	YES
2" IPS	10" DIPS	4.7 S	H	10004516	30	1.33	YES
2" IPS	12" IPS	4.7 S	H	10003560	30	1.33	YES
2" IPS	12" DIPS	4.7 S	H	10004512	30	1.22	YES

Call for availability of other sizes and dimensions.

4.7R = 4.7 Pin with Resistor

4.7S = 4.7 Solid Pin