

Fig. 52

Concrete Rod Attachment Plate

Size Range: $\frac{3}{8}$ " through $1\frac{1}{4}$ "

Material: Carbon steel

Finish: Plain or Galvanized

Service: Structural attachment to concrete ceiling where vertical adjustment is desired. Normally used with threaded rod and nut and anchors of sufficient strength to hold the desired load.

Ordering: Specify rod size, figure number, name and finish.

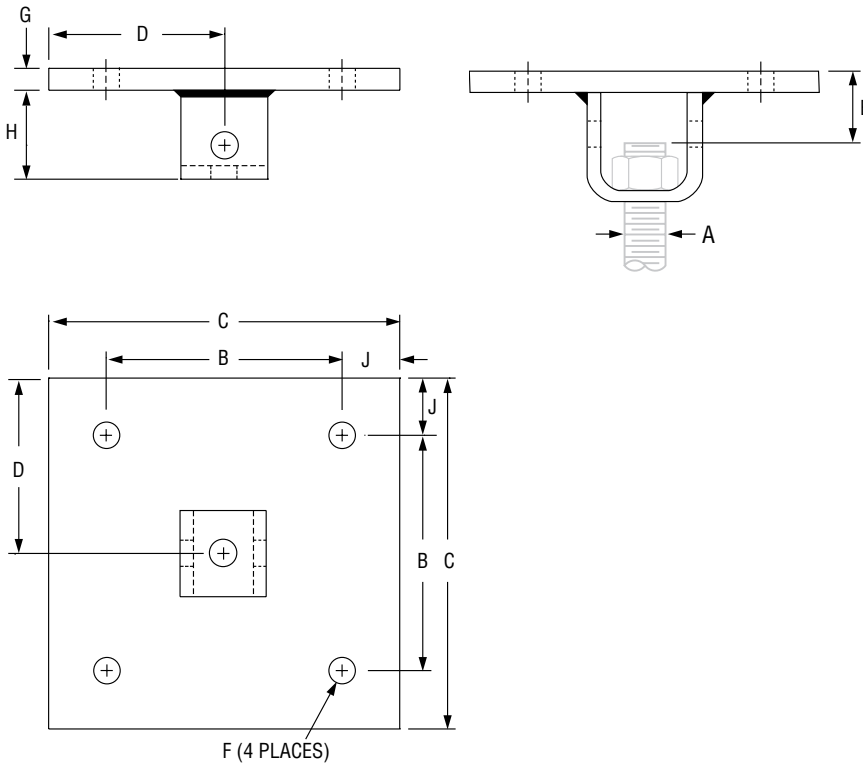


FIG. 52: LOAD (LBS) • WEIGHT (LBS) • DIMENSIONS (IN)

Rod Size A	Max Load ■	Weight	J	B	C	D	E	F	H	G
$\frac{3}{8}$	730	11.6	1	8	10	5	$\frac{2}{4}$	$\frac{9}{16}$	$\frac{2}{8}$	$\frac{3}{8}$
$\frac{1}{2}$	1,350	11.6					$\frac{2}{8}$			
$\frac{5}{8}$	2,160	15.1					$\frac{2}{4}$	$\frac{11}{16}$	$\frac{3}{8}$	$\frac{1}{2}$
$\frac{3}{4}$	3,230	16.1					$\frac{3}{8}$			
$\frac{7}{8}$	4,480	16.7	2	12	6	$\frac{3}{2}$	$\frac{13}{16}$	$\frac{4}{2}$	$\frac{3}{4}$	
1	5,900	34.9				$\frac{3}{8}$				
$1\frac{1}{4}$	9,500	40.9				$\frac{15}{16}$	5			

■ Based on the rod diameter only. Rating is subject to the conditions that the concrete and anchors used are of sufficient strength to hold the load.