

Fig. 177

Adjustable Pipe Roll Support

Size Range: 1" through 30"

Material: Cast iron roll and sockets; steel roll rod, continuous thread rods and hex nuts

Finish: Plain

Service: For support of pipe where horizontal movement due to expansion and contraction will occur and where vertical adjustment up to 6" may be necessary.

Maximum Temperature: 450° F at roller.

Approvals: Complies with Federal Specification A-A-1192A (Type 41), WW-H-171-E (Type 42), ANSI/MSS SP-69 and MSS SP-58 (Type 41).

Installation: Normally used directly above steel beams, brackets angles, etc.

How to size:

- (1) If roll is to support bare pipe, select the size directly from nominal pipe size (see below).
- (2) If used with pipe covering protection saddle, see page 114 for size of pipe roll.
- (3) If roll is to support covered pipe, the O.D. of the covering should not be greater than the O.D. of the pipe for which the roll was designed.

Ordering: Specify size of roll, figure number and name. Be certain to order oversized rolls when insulation and protection saddles makes this necessary.

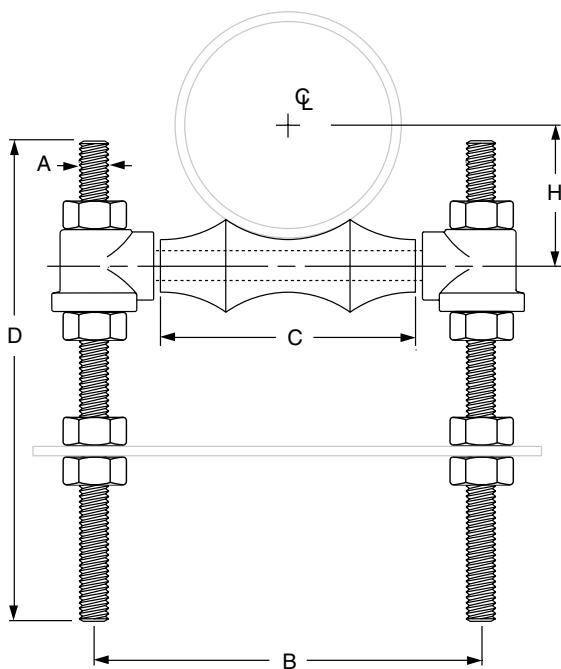
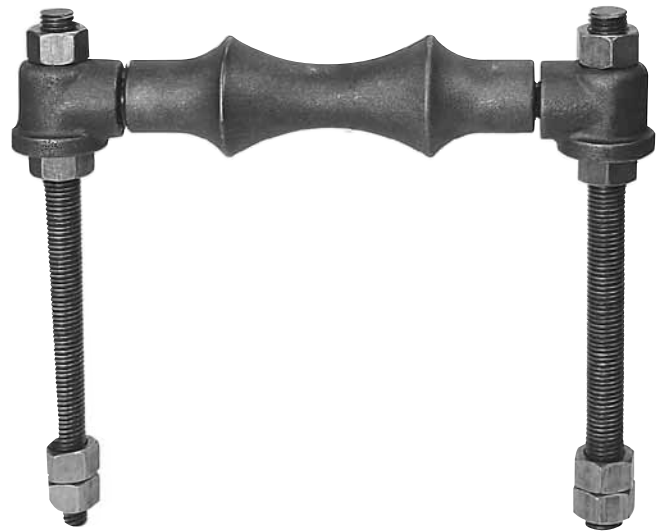


FIG. 177: WEIGHT (LBS) • DIMENSIONS (IN)

Pipe Size	Weight	A	B	C	D	H
1	1.1	3/8	3	1 1/2	12	1 1/16
1 1/4	1.2		3 3/8	1 7/8		1 1/4
1 1/2	1.2		3 5/8	2 1/8		1 3/8
2	1.3	4 1/8	2 5/8	1 5/8		
2 1/2	2.3	4 7/8	3 3/8	1 15/16		
3	2.4	5 1/2	3 3/4	2 1/4		
3 1/2	2.7	1/2	6 1/8	4 1/4	18	2 9/16
4	3.8		6 7/8	4 3/4		2 13/16
5	4.7		8 1/16	5 13/16		3 1/16
6	7.6	9 1/16	6 7/8	4		
8	11.0	11 15/16	8 7/8	5 1/8		
10	13.7	14 1/16	11	6 3/8		
12	19.4	15 3/16	12 1/2	7 1/16		
14	31.2	3/4	17 3/4	14 1/4	24	8 3/8
16	42.5		19 3/4	16 1/4		9 7/16
18	46.6		21 7/8	18 1/4		10 1/2
20	66.2	1	24 1/4	20 1/4		11 5/8
24	102.5	1 1/4	28 7/8	24 1/4		14
30	186.8	1 1/2	35 1/2	30 1/4		17 7/16

DI/CI ROLL SIZING

DI/CI Pipe Size	Fig. 177 Roller Size
3	4
4	5
6	6
8	8
10	10
12	14
14	16
16	18
18	20
20	24
24	30
30	No Recom.