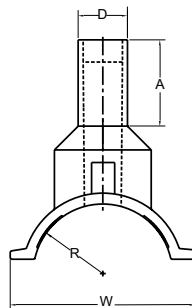
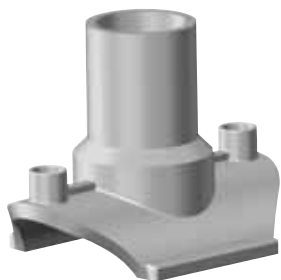
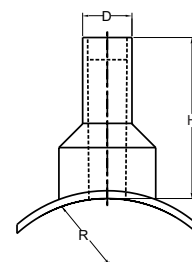
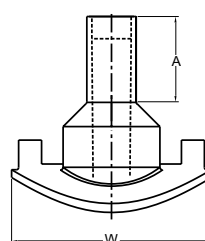
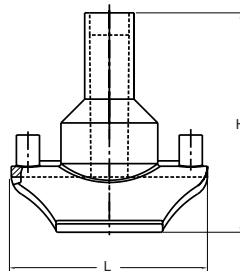


Electrofusion Fittings: Branch Saddles

**Branch Saddle Drawing 1:
w/1¼" Outlet**

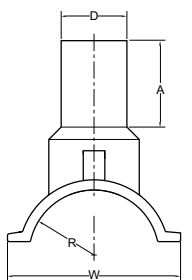


2" IPS-6" DIPS

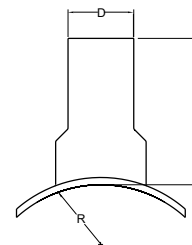
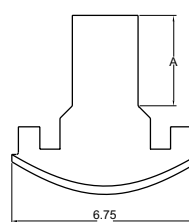
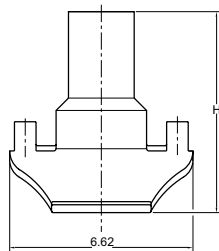


8" IPS-12" DIPS

**Branch Saddle Drawing 2:
w/2" Outlet**



2" IPS-6" DIPS



8" IPS-12" DIPS

BRANCH SADDLE DIMENSIONS: 1¼" OUTLET

Nominal Base Size	A	D	H	W	L
2" IPS	2.88	1.66	6.65	3.59	6.62
3" IPS	2.88	1.66	6.65	4.60	6.62
4" IPS/DIPS	2.88	1.66	7.27	6.26	6.62
6" IPS/DIPS	2.88	1.66	8.43	8.86	6.62
8" IPS/DIPS	2.88	1.66	5.29	6.75	*
10" IPS/DIPS	2.88	1.66	5.53	6.75	*
12" IPS/DIPS	2.88	1.66	5.70	6.750	*

BRANCH SADDLE DIMENSIONS: 2" OUTLET

Nominal Base Size	A	D	H	W	L
2" IPS	3.28	2.37	6.65	3.59	6.62
3" IPS	3.28	2.37	6.65	4.60	6.62
4" IPS/DIPS	3.28	2.37	7.27	6.26	6.62
6" IPS/DIPS	3.28	2.37	8.43	8.68	6.62
8" IPS/DIPS	3.28	2.37	5.29	6.75	*
10" IPS/DIPS	3.28	2.37	5.56	6.75	*
12" IPS/DIPS	3.28	2.37	5.73	6.75	*

(PE2406/PE2708) ELECTROFUSION BRANCH SADDLES (full pressure)

Outlet Size	Main Size	Pin Type	Clamp Type	Part Number	Pack. Qty.	Wt.	CSA
1¼" IPS	2" IPS	4.7 R	B	10001334	-	-	-
1¼" IPS	3" IPS	4.7 R	C	10001850	-	-	-
1¼" IPS	4" IPS	4.7 R	D	10001338	-	-	-

(PE2406/PE2708) ELECTROFUSION BRANCH SADDLES (full pressure)

Outlet Size	Main Size	Pin Type	Clamp Type	Part Number	Pack. Qty.	Wt.	CSA
2" IPS	2" IPS	4.7 R	B	5757761	40	0.93	YES
2" IPS	3" IPS	4.7 R	C	5757762	40	1.01	YES
2" IPS	4" IPS	4.7 R	D	5757763	30	1.11	YES
2" IPS	6" IPS	4.7 R	E	5757764	30	1.30	YES
2" IPS	8" IPS	4.7 R	H	10000823	30	1.01	YES
2" IPS	10" IPS	4.7 S	H	call	-	-	-
2" IPS	12" IPS	4.7 S	H	call	-	-	-

4.7R = 4.7 Pin with Resistor
4.7S = 4.7 Solid Pin

Call for availability of other sizes and dimensions.