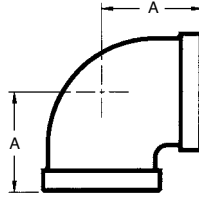




Model 811 90° Elbow

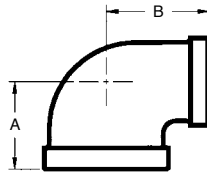


90° Elbow

Unit: Inch

Size	A	Wt. Lbs.	Box Q'ty
1/2	1.12	0.25	240
3/4	1.31	0.40	120
1	1.50	0.64	70
1-1/4	1.75	0.95	40
1-1/2	1.94	1.24	30
2	2.25	1.74	20
2-1/2	2.70	3.28	10

Model 812 90° Reducing Elbow

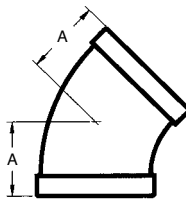


90° Reducing Elbow

Unit: Inch

Size	A	B	Wt. Lbs.	Box Q'ty
3/4 x 1/2	1.20	1.22	0.33	160
1 x 1/2	1.26	1.36	0.44	110
1 x 3/4	1.18	1.45	0.53	90
1-1/4 x 1/2	1.34	1.53	0.64	75
1-1/4 x 3/4	1.45	1.62	0.75	60
1-1/4 x 1	1.58	1.67	0.77	55
1-1/2 x 1/2	1.41	1.66	0.92	45
1-1/2 x 3/4	1.52	1.75	0.95	45
1-1/2 x 1	1.65	1.80	0.99	40
1-1/2 x 1-1/4	1.82	1.88	1.14	35
2 x 3/4	1.60	1.97	1.28	30
2 x 1	1.73	2.02	1.58	25
2 x 1-1/2	2.02	2.16	1.67	20
2-1/2 x 2	2.39	2.60	3.01	15

Model 813 45° Elbow

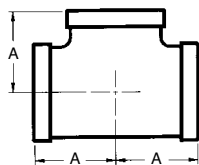


45° Elbow

Unit: Inch

Size	A	Wt. Lbs.	Box Q'ty
1/2	0.88	0.22	250
3/4	0.98	0.33	150
1	1.12	0.49	90
1-1/4	1.29	0.73	50
1-1/2	1.43	0.93	35
2	1.68	1.54	18
2-1/2	1.95	2.71	12

Model 814 Straight Tee



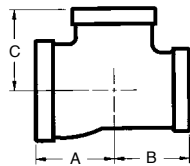
Straight Tee

Unit: Inch

Size	A	Wt. Lbs.	Box Q'ty
1/2	1.12	0.33	150
3/4	1.31	0.51	90
1	1.50	0.86	60
1-1/4	1.75	1.30	35
1-1/2	1.94	1.63	24
2	2.25	2.64	12
2-1/2	2.70	4.51	8



Model 815 Reducing Tee

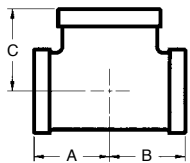


Reducing Tee

Unit: Inch

Size			A	B	C	Wt. Lbs.	Box Q'ty	
3/4	3/4	1/2	1.20	1.20	1.22	0.46	95	
1	1/2	1	1.50	1.36	1.50	0.71	55	
		1/2	1.26	1.20	1.36	0.58	80	
		3/4	1.37	1.31	1.45	0.68	65	
	3/4	1	1.50	1.45	1.50	0.77	55	
		1/2	1.26	1.26	1.36	0.66	65	
		3/4	1.37	1.37	1.45	0.73	60	
1-1/4	1	1/2	1.34	1.26	1.53	0.82	50	
		3/4	1.45	1.37	1.62	0.90	50	
		1	1.58	1.50	1.67	1.04	45	
	1-1/4	1-1/4	1.75	1.67	1.75	1.10	40	
		1/2	1.34	1.34	1.53	0.88	45	
		3/4	1.45	1.45	1.62	0.94	45	
1-1/2	1	1	1.58	1.58	1.67	1.10	40	
		1/2	1.44	1.31	1.69	0.97	40	
		3/4	1.50	1.37	1.75	1.15	40	
	1-1/4	1	1.65	1.50	1.80	1.15	30	
		1-1/2	1.94	1.80	1.94	1.52	30	
		1/2	1.41	1.34	1.66	1.04	40	
	1-1/2	1-1/4	3/4	1.52	1.45	1.75	1.10	40
			1	1.65	1.58	1.80	1.32	30
			1/2	1.41	1.41	1.66	1.15	35
		1-1/2	3/4	1.52	1.52	1.75	1.23	35
			1	1.65	1.65	1.80	1.39	30
			1-1/4	1.82	1.82	1.88	1.50	30
2	1	2	2.25	2.02	2.25	2.18	15	
		1-1/4	2	2.25	2.10	2.25	2.31	15
		1/2	1.49	1.41	1.88	1.50	30	
	1-1/2	3/4	1.60	1.52	1.97	1.61	25	
		1	1.73	1.65	2.02	1.65	20	
		1-1/2	2.02	1.94	2.16	2.02	20	
	2	2	2	2.25	2.16	2.25	2.31	15
			1/2	1.49	1.49	1.88	1.54	30
			3/4	1.60	1.60	1.97	1.67	20
		2	1	1.73	1.73	2.02	1.92	20
			1-1/4	1.90	1.90	2.10	2.05	20
			1-1/2	2.02	2.02	2.16	2.11	15
2-1/2	2	3/4	1.74	1.60	2.32	2.22	15	

Model 815 Bullhead Tee

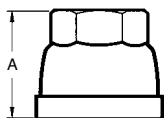


Bullhead Tee

Unit: Inch

Size			A	B	C	Wt. Lbs.	Box Q'ty
3/4	3/4	1	1.45	1.45	1.37	0.66	65
1	1	1-1/4	1.67	1.67	1.58	0.97	45
		1-1/2	1.80	1.80	1.65	1.15	35
1-1/4	1-1/4	1-1/2	1.88	1.88	1.82	1.43	30
		1-1/2	1.88	1.88	1.82	1.52	30
		2	2.10	2.10	1.90	1.80	24
1-1/2	1-1/4	2	2.16	2.10	2.02	1.94	20
	1-1/2	2	2.16	2.16	2.02	2.00	20
2	2	2-1/2	2.60	2.60	2.39	3.61	10

Model 816 Reducing Coupling



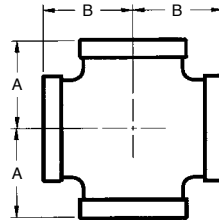
Reducing Coupling

Unit: Inch

Size	A	Wrench Size	Wt. Lbs.	Box Q'ty
3/4 x 1/2	1.63	1-1/4	0.36	150
1 x 1/2	1.69	1-1/4	0.37	140
1 x 3/4	1.37	1-1/2	0.53	120
1-1/4 x 3/4	2.06	1-1/2	0.69	80
1-1/4 x 1	2.06	-	0.66	60
1-1/2 x 1	2.31	-	0.84	50
1-1/2 x 1-1/4	2.31	-	0.90	45
2 x 1	2.81	-	1.34	35
2 x 1-1/4	2.81	-	1.39	30
2 x 1-1/2	2.81	-	1.41	30
2-1/2 x 2	3.25	-	2.44	18



Model 817 Cross

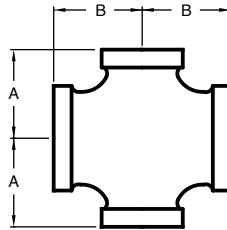


Cross

Unit: Inch

Size	A	B	Wt. Lbs.	Box Q'ty
1/2	1.12	1.12	0.40	90
3/4	1.31	1.31	1.80	60
1	1.50	1.50	0.97	45
1-1/4	1.75	1.75	1.58	25
1-1/2	1.94	1.94	1.89	20
2	2.25	2.25	0.73	10

Model 817 Reducing Cross

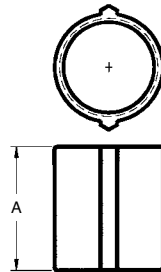


Reducing Cross

Unit: Inch

Size	A	B	Wt. Lbs.	Box Q'ty
1-1/4x1-1/4x1x1	1.67	1.58	1.25	30
1-1/2x1-1/2x1x1	1.80	1.65	1.47	24
2 x 2 x 1 x 1	2.02	1.73	2.64	10

Model 818 Straight Coupling

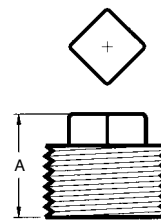


Straight Coupling

Unit: Inch

Size	A	Wrench Size	Wt. Lbs.	Box Q'ty
1/2	1.38	1-1/8"	0.18	360
3/4	1.61	1-3/8"	0.26	200
1	1.77	1-11/16"	0.44	110
1-1/4	2.00	2"	0.55	75
1-1/2	2.20	2-1/4"	0.71	60
2	2.60	2-3/4"	1.15	30
2-1/2	3.00	3-3/8"	2.29	18

Model 819 Plug

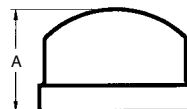


Plug

Unit: Inch

Size	A	Wt. Lbs.	Box Q'ty
1/2	0.93	0.09	500
3/4	1.13	0.18	300
1	1.25	0.25	200
1-1/4	1.36	0.51	110
1-1/2	1.45	0.71	80
2	1.50	0.99	45

Model 820 Cap



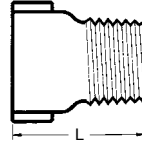
Cap

Unit: Inch

Size	A	Wt. Lbs.	Box Q'ty
1/2	0.89	0.14	500
3/4	1.00	0.20	300
1	1.18	0.33	180
1-1/4	1.32	0.46	110
1-1/2	1.38	0.57	80
2	1.48	0.88	45
2-1/2	1.77	1.54	25



Model 825 Extension Piece

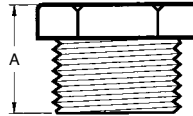


Extension Piece

Unit: Inch

Size	L	Wt. Lbs.	Box Q'ty
1/2 x 1-1/2L	1.50	0.20	300
1/2 x 2L	2.00	0.26	250
3/4 x 1-1/2L	1.50	0.22	250
3/4 x 2L	2.00	0.31	200

Model 827 Hex Bushing

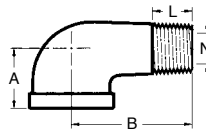


Hex Bushing

Unit: Inch

Size	A	Wt. Lbs.	Box Q'ty
1 x 1/2	1.06	0.22	280
1 x 3/4	1.06	0.18	280
1-1/4 x 1	1.18	0.31	150
1-1/2 x 1	1.26	0.53	100
1-1/2 x 1-1/4	1.26	0.35	100
2 x 1	1.34	0.68	80
2 x 1-1/4	1.34	0.66	80
2 x 1-1/2	1.34	0.62	80

Model 831 90° Long Street Elbow

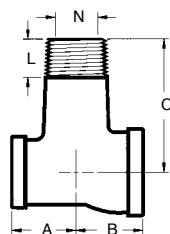


90° Long Street Elbow

Unit: Inch

Size	A	B	Wt. Lbs.	Box Q'ty
1 x 1/2M	1.50	3.00	0.68	80
1 x 1M	1.50	3.00	0.73	60

Model 832 Long Street Tee



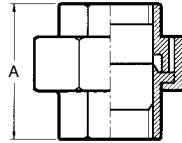
Long Street Tee

Unit: Inch

Size	A	B	C	Wt. Lbs.	Box Q'ty
1 x 1/2 x 1M	1.50	1.40	3.00	0.91	50
1 x 1 x 1M	1.50	1.50	3.00	0.99	45



Model 830 Brass Seat Union



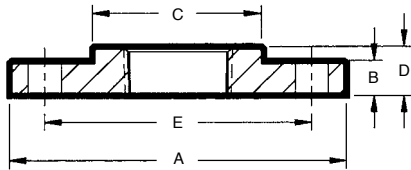
Brass Seat Union

Unit: Inch

Size	A	Wt. Lbs.	Box Q'ty
1/2	1.81	0.46	110
3/4	1.99	0.66	80
1	2.17	1.08	50
1-1/4	2.52	1.54	35
1-1/2	2.64	2.02	25
2	3.15	3.15	18

Model 841 Companion Flange

The Model 841 is a traditional companion flange used for transition from a flanged to a threaded piping system.



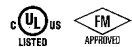
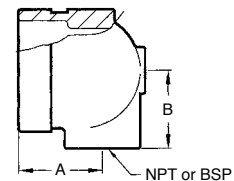
Class 150 Ductile Iron Flange

Unit: Inch

Nominal Pipe Size	A	B	C	D	E	weight Lbs
1	4.25	0.56	1.94	0.69	3.12	1.75
1-1/4	4.62	0.62	2.31	0.81	3.50	2.20
1-1/2	5.00	0.69	2.56	0.88	3.88	2.55
2	6.00	0.75	3.06	1.00	4.75	4.20
2-1/2	7.00	0.88	3.56	1.12	5.50	5.85
3	7.50	0.94	4.25	1.19	6.00	6.60
4	9.00	0.94	5.31	1.31	7.50	11.75
6	11.00	1.00	7.56	1.56	9.50	16.50
8	13.50	1.12	9.69	1.75	11.75	26.00

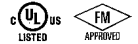
Model 899 End-All Fitting

The Model 899 End-All fitting is a unique domed end cap fitting available with 1/2", 3/4" and 1" NPT or BSP threaded outlets. Designed as an end of line fitting the End-All features two multi-function bosses which can be used for the direct connection of sprinkler heads, sprigs, drops, drains and or gauges.



Unit: Inch

Nominal Size Grooved X Threaded	Dimensions		Weight Lbs
	A	B	
1-1/4 x 1/2	1.75	1.19	0.7
1-1/4 x 3/4	1.75	1.19	0.7
1-1/4 x 1	1.90	1.25	0.7
1-1/2 x 1/2	1.75	1.31	0.9
1-1/2 x 3/4	1.75	1.31	0.9
1-1/2 x 1	1.90	1.38	0.9
2 x 1/2	1.75	1.56	1.1
2 x 3/4	1.75	1.56	1.1
2 x 1	1.90	1.63	1.1
2-1/2 x 1/2	1.75	1.75	1.3
2-1/2 x 3/4	1.75	1.75	1.3
2-1/2 x 1	1.90	1.81	1.3



Sprinkler Hub

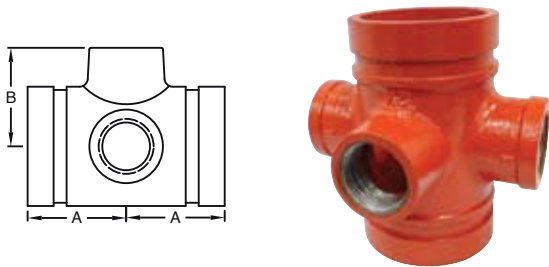
Models 850, 851 & 853

The Shurjoint Sprinkler Hubs are grooved-end manifold fittings with a number of threaded outlets to accommodate flexible sprinkler hoses. The Sprinkler Hubs can also be used in combination with flexible sprinkler hoses and traditional hard piping depending on your requirements. These fittings work as a hub for multiple flexible hoses and or hard pipe runs, thus reducing the number or

headers, drop nipples and fittings required. All outlets are 1" NPT or BSPT. Maximum working pressure 300 psi (20 bar, 2.0 MPa) CWP. cULus listed and FM approved.



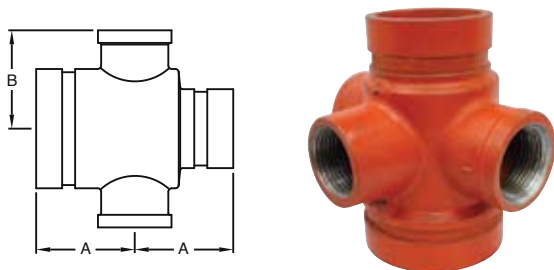
Model 850 Sprinkler Hub - 3 Outlets



Nominal Size mm/in	A mm/in	B mm/in	N.W. Kgs/Lbs
50 x 50 x 25 (3)	60	51	1.00
2 x 2 x 1 (3)	2.38	2.02	2.20
65 x 65 x 25 (3)	60	57	1.25
2-1/2 x 2-1/2 x 1 (3)	2.38	2.25	2.75

(): Number of outlets

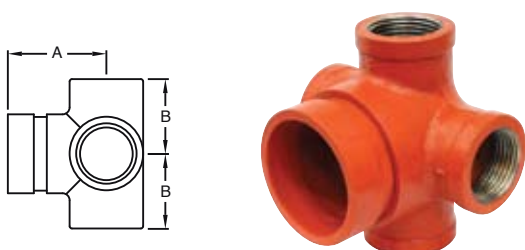
Model 851 Reducing Sprinkler Hub - 3 Outlets



Nominal Size mm/in	A mm/in	B mm/in	N.W. Kgs/Lbs
50 x 40 x 25 (3)	60	51	1.00
2 x 1-1/2 x 1 (3)	2.38	2.02	2.20
65 x 40 x 25 (3)	60	57	1.20
2-1/2 x 1-1/2 x 1 (3)	2.38	2.25	2.65
65 x 50 x 25 (3)	60	60	1.30
2-1/2 x 2 x 1 (3)	2.38	2.25	2.86

(): Number of outlets

Model 853 Sprinkler End Hub - 4 Outlets



Nominal Size mm/in	A mm/in	B mm/in	N.W. Kgs/Lbs
40 x 25 (4)	60	46	0.8
1-1/2 x 1 (4)	2.38	1.80	1.76
50 x 25 (4)	60	51	1.00
2 x 1 (4)	2.38	2.02	2.20
65 x 25 (4)	60	57	1.20
2-1/2 x 1 (4)	2.38	2.25	2.64

(): Number of outlets