

March 2010

For the most current product/pricing information on Anvil products, please visit our website at www.anvilintl.com.



CPVC PIPE HANGERS

BUILDING CONNECTIONS THAT LAST



Size Range: 3/4" through 2"

Finish: Galvanized steel

Service: Hanger for CPVC pipe in the horizontal position on the side of structural wood beams and Steel 20 Ga. (min) with hanger tab in the upward position only (Fig. A). It can also be used as a guide to limit movement of vertical CPVC pipe with the tab in the horizontal position.

Approvals: UL listed.

Features:

- Beveled edge design helps protect the CPVC pipe from any rough surface.
- Easily attaches to wood structure with #10 x 1" hex washer head self threading screw supplied with product. No pre-drilling required.

Ordering: Specify CPVC pipe size, figure number and description.

- Steel applications require one (1) #14 x 1" hex washer head self-drilling TEK screw. Not Supplied. Part Number STD-0090.

Installation:

- Place hanger over pipe.
- Secure hanger to mounting surface with screws provided.

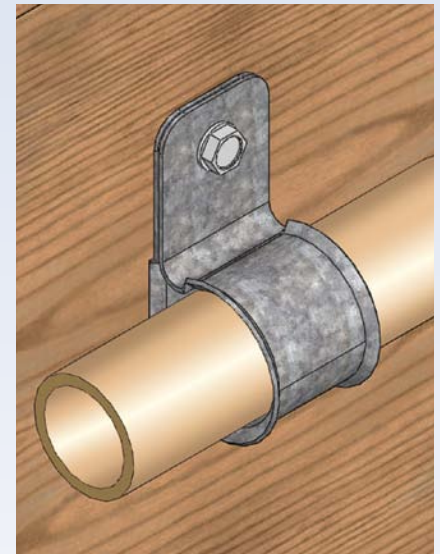
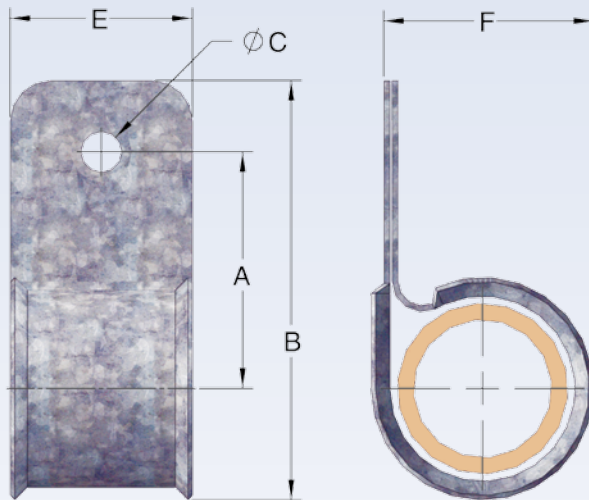


Fig. A

FIG. 185: WEIGHT (LBS) • DIMENSIONS (IN)							
CPVC Pipe Size	A	B	ØC	E	F	Max. Hanger Spacing (FT.)	Approx. Weight/100 (lbs)
3/4	1 7/16	2 1/2	1/4	1 1/8	1 1/4	5 1/2	8
1	1 3/4	2 7/8	1/4	1 1/8	1 1/2	6	9
1 1/4	1 11/16	3	1/4	1 1/8	1 7/8	6 1/2	10
1 1/2	1 7/8	3 7/16	1/4	1 1/8	2 1/8	7	12
2	2	3 3/8	1/4	1 1/8	2 5/8	8	14

Figure 186 - Two Hole Pipe Strap

Size Range: 3/4" through 2"

Finish: Galvanized steel

Service: Hanger for CPVC pipe in the horizontal position on the bottom and side of structural wood beams, composite beams and Steel 20 Ga. (min.) (Fig. A, C respectively). Can be used as a restrainer when installed on top of structural wood beams (Fig. B), for limiting pipe movement due to thrust loads during sprinkler system start-up. It can also be used as a guide to limit movement for pipe in the vertical position. When used on composite wood beams, web thickness must be 3/8" or greater.

Approvals: UL listed.

Features:

- Dimples secure hanger to pipe for quick installation.
- Beveled edge design helps protect the CPVC pipe from any rough surface.
- Easily attaches to wood structure with #10 x 1" hex washer head self threading screw supplied with product. No pre-drilling required.

Ordering: Specify CPVC pipe size, figure number and description.

- Steel applications require two (2) #14 x 1" hex washer head self-drilling TEK screws. Not Supplied. Part Number STD-0090.

Installation:

- Snap hanger over pipe. Dimples will prevent hanger from falling off pipe.
- Secure hanger to mounting surface with screws provided.
- Do not make adjustments to hanger mounting flanges that result in clamping the pipe to the mounting surface. Pipe must be allowed to move freely through hanger.

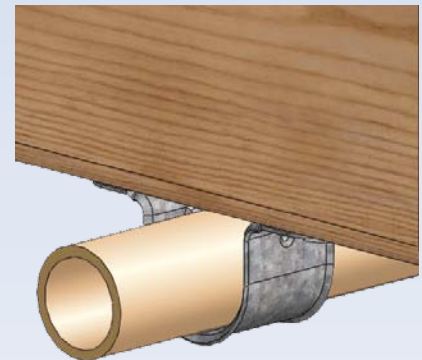
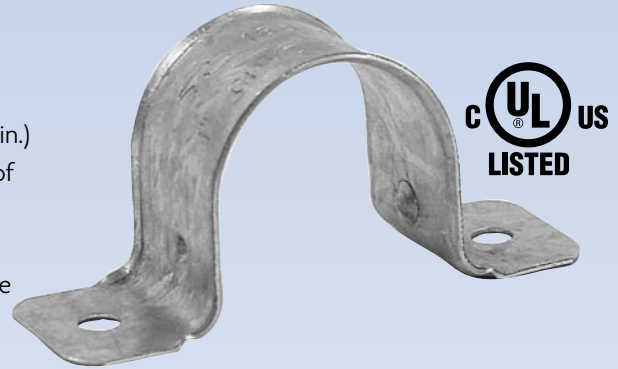


Fig. A

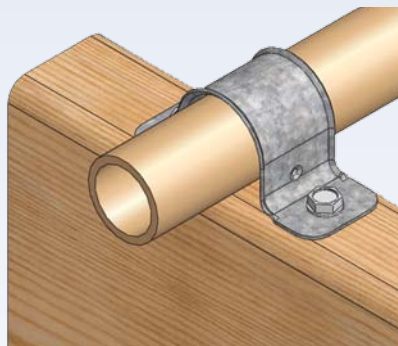
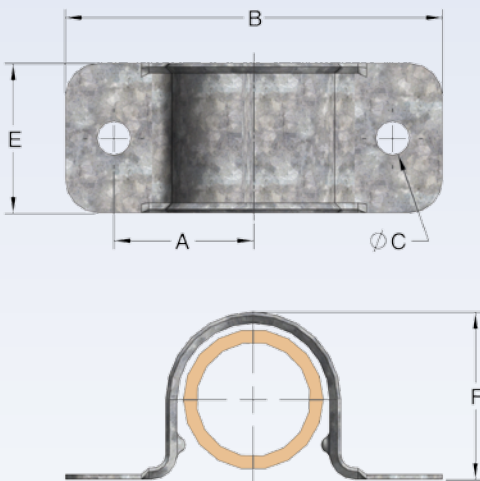


Fig. B

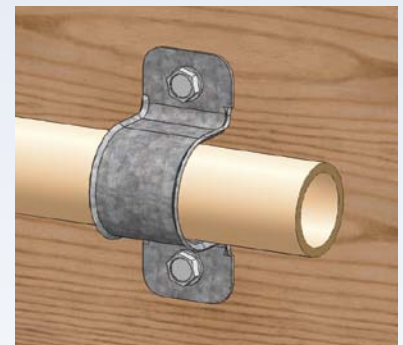


Fig. C

FIG. 186: WEIGHT (LBS) • DIMENSIONS (IN)

CPVC Pipe Size	A	B	ØC	E	F	Max. Hanger Spacing (FT.)	Approx. Weight/100 (lbs)
3/4	1	2 ¹³ / ₁₆	1/4	1 ¹ / ₈	1 ¹ / ₈	5 ¹ / ₂	5
1	1 ¹ / ₄	3 ¹ / ₄	1/4	1 ¹ / ₈	1 ¹ / ₂	6	6
1 ¹ / ₄	1 ⁵ / ₁₆	3 ³ / ₈	1/4	1 ¹ / ₈	1 ¹¹ / ₁₆	6 ¹ / ₂	7
1 ¹ / ₂	1 ⁹ / ₁₆	3 ⁷ / ₈	1/4	1 ¹ / ₈	2 ¹ / ₈	7	8
2	1 ¹³ / ₁₆	4 ⁵ / ₁₆	1/4	1 ¹ / ₈	2 ⁹ / ₁₆	8	9

Figure 187 - Two Hole 90° Side Mount Strap

Size Range: 3/4" through 2"

Finish: Galvanized steel

Service: Hanger for CPVC pipe in the horizontal position on the bottom of structural wood beams and Steel 20 Ga. (min.) (Fig. A). *Can be used as a restrainer, only in Steel 20 Ga. (min) (Fig. B).* During installation, adjust hanger mounting flanges such that pipe contacts both mounting surface and hanger, minimizing vertical pipe movement.

Approvals: UL listed.

Features:

- Beveled edge design helps protect the CPVC pipe from any rough surface.
- Easily attaches to wood structure with #10 x 1" hex washer head self threading screw supplied with product. No pre-drilling required.

Ordering: Specify CPVC pipe size, figure number and description.

- Steel applications require two (2) #14 x 1" hex washer head self-drilling TEK screws. Not Supplied. Part Number STD-0090.

Installation:

- Snap hanger over pipe. Dimples will prevent hanger from falling off pipe.
- Secure hanger to mounting surface with screws provided.
- Do not anchor tightly to mounting surface. Pipe must be allowed to move freely through hanger.

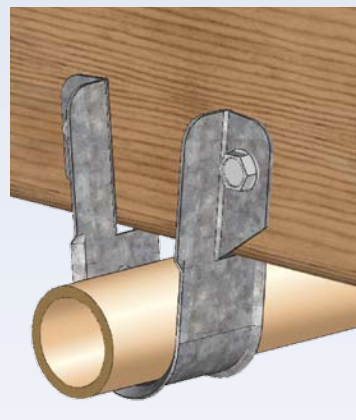
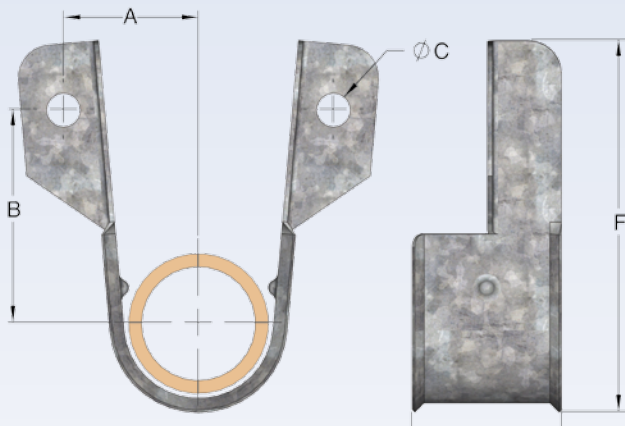


Fig. A

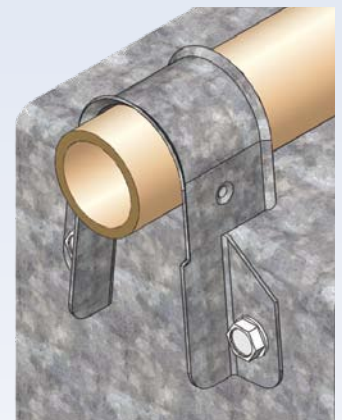


Fig. B

FIG. 187: WEIGHT (LBS) • DIMENSIONS (IN)

CPVC Pipe Size	A	B	øC	E	F	Max. Hanger Spacing (FT.)	Approx. Weight/100 (lbs)
3/4	1	1½	¼	1⅞	2¾	5½	5
1	1⅞	1½	¼	1⅞	2 ¹³ / ₁₆	6	6
1¼	1 ¹⁵ / ₁₆	1¾	¼	1⅞	3¼	6½	7
1½	1½	1⅞	¼	1⅞	3½	7	8
2	1¾	2	¼	1⅞	3⅞	8	9

Figure 188 - Two Hole Stand Off Strap

Size Range: 3/4" through 2"

Finish: Galvanized steel

Service: Support for CPVC pipe off the face of structural wood beams (Fig. A) eliminates the use of back-up blocks. It can also be used as a hanger for CPVC pipe in the horizontal position on the bottom of structural wood beams and Steel 20 Ga. (min.) (Fig. B).

Approvals: UL listed.

Features:

- Beveled edge design helps protect the CPVC pipe from any rough surface.
- Easily attaches to wood structure with #10 x 1" hex washer head self threading screw supplied with product. No pre-drilling required.
- Eliminates wooden spacer blocks.

Ordering: Specify CPVC pipe size, figure number and description.

- Steel applications require two (2) #14 x 1" hex washer head self-drilling TEK screws. Not Supplied. Part Number STD-0090.

Installation:

- Snap hanger over pipe.
- Position hanger back around pipe but allow for pipe movement.
- Secure hanger to mounting surface with screws provided. Recheck to insure that the pipe is allowed to move freely through hanger.

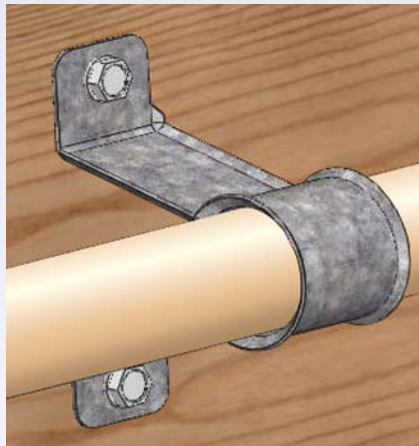
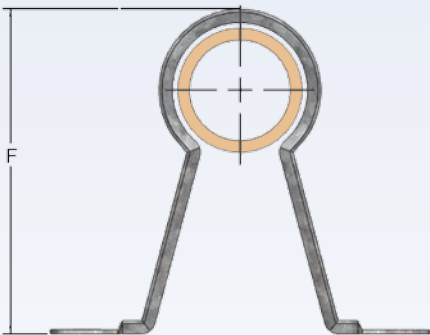
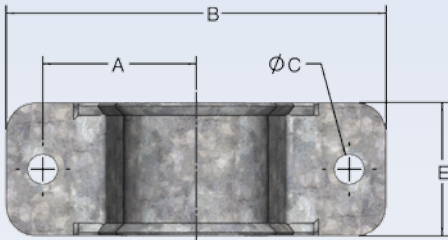


Fig. A

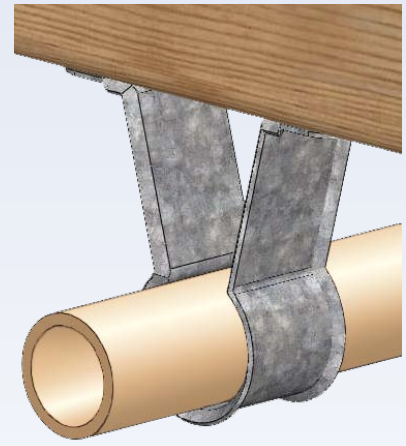


Fig. B

FIG. 188: WEIGHT (LBS) • DIMENSIONS (IN)

CPVC Pipe Size	A	B	ØC	E	F	Max. Hanger Spacing (FT.)	Approx. Weight/100 (lbs)
3/4	1 5/16	3 1/4	1/4	1 1/8	2 3/4	5 1/2	5
1	1 3/8	3 3/8	1/4	1 1/8	3	6	6
1 1/4	1 1/2	3 11/16	1/4	1 1/8	3 3/16	6 1/2	7
1 1/2	1 7/8	4 3/8	1/4	1 1/8	3 3/16	7	8
2	2	4 1/2	1/4	1 1/8	4 1/8	8	9