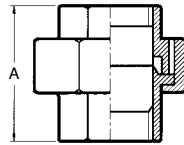




Model 830 Brass Seat Union



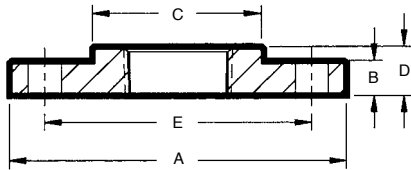
Brass Seat Union

Unit: Inch

Size	A	Wt. Lbs.	Box Q'ty
1/2	1.81	0.46	110
3/4	1.99	0.66	80
1	2.17	1.08	50
1-1/4	2.52	1.54	35
1-1/2	2.64	2.02	25
2	3.15	3.15	18

Model 841 Companion Flange

The Model 841 is a traditional companion flange used for transition from a flanged to a threaded piping system.



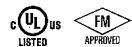
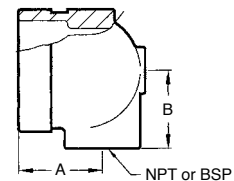
Class 150 Ductile Iron Flange

Unit: Inch

Nominal Pipe Size	A	B	C	D	E	weight Lbs
1	4.25	0.56	1.94	0.69	3.12	1.75
1-1/4	4.62	0.62	2.31	0.81	3.50	2.20
1-1/2	5.00	0.69	2.56	0.88	3.88	2.55
2	6.00	0.75	3.06	1.00	4.75	4.20
2-1/2	7.00	0.88	3.56	1.12	5.50	5.85
3	7.50	0.94	4.25	1.19	6.00	6.60
4	9.00	0.94	5.31	1.31	7.50	11.75
6	11.00	1.00	7.56	1.56	9.50	16.50
8	13.50	1.12	9.69	1.75	11.75	26.00

Model 899 End-All Fitting

The Model 899 End-All fitting is a unique domed end cap fitting available with 1/2", 3/4" and 1" NPT or BSP threaded outlets. Designed as an end of line fitting the End-All features two multi-function bosses which can be used for the direct connection of sprinkler heads, sprigs, drops, drains and or gauges.



Unit: Inch

Nominal Size Grooved X Threaded	Dimensions		Weight Lbs
	A	B	
1-1/4 x 1/2	1.75	1.19	0.7
1-1/4 x 3/4	1.75	1.19	0.7
1-1/4 x 1	1.90	1.25	0.7
1-1/2 x 1/2	1.75	1.31	0.9
1-1/2 x 3/4	1.75	1.31	0.9
1-1/2 x 1	1.90	1.38	0.9
2 x 1/2	1.75	1.56	1.1
2 x 3/4	1.75	1.56	1.1
2 x 1	1.90	1.63	1.1
2-1/2 x 1/2	1.75	1.75	1.3
2-1/2 x 3/4	1.75	1.75	1.3
2-1/2 x 1	1.90	1.81	1.3