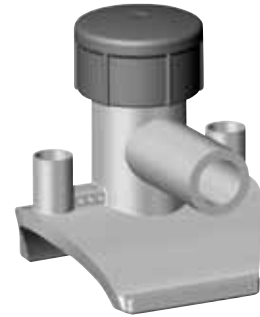


# Electrofusion Fittings: Tapping Tees (EFTT) w/Butt Outlet



Call for availability of other sizes and dimensions.

4.7R = 4.7 Pin with Resistor

4.7S = 4.7 Solid Pin

## (PE2406/PE2708) ELECTROFUSION TAPPING TEE w/Butt Outlet

Outlet Size	Main Size	Cutter Size Material	Pin Type	Clamp Type	Part Number	Pack. Qty.	Wt.	CSA
1/2" CTS	1 1/4" IPS	0.5 / Steel	4.7 R	A	5757017	50	0.88	YES
1/2" CTS	1 1/4" IPS	0.8 / Steel	4.7 R	Underpart	10009385			YES
1/2" CTS	2" IPS	0.5 / Steel	4.7 R	B	5757018	50	0.80	YES
1/2" CTS	2" IPS	0.8 / Steel	4.7 R	Underpart	10009409			YES
1/2" CTS	3" IPS	0.5 / Steel	4.7 R	C	5757019	40	0.95	YES
1/2" CTS	4" IPS	0.5 / Steel	4.7 R	D	5757020	30	1.04	YES
1/2" CTS	4" IPS	0.8 / Steel	4.7 R	Underpart	10009400			YES
1/2" CTS	6" IPS	0.5 / Steel	4.7 R	E	5757021	20	1.25	YES
1/2" CTS	6" IPS	0.5 / Steel	4.7 R	Underpart	10009404			
1/2" CTS	8-10" IPS	0.5 / Steel	4.7 R	H	5757174	40	0.80	YES
1/2" IPS	1 1/4" IPS	0.5 / Steel	4.7 R	A	5757022	50	0.80	YES
1/2" IPS	2" IPS	0.5 / Steel	4.7 R	B	5757023	40	0.88	YES
1/2" IPS	3" IPS	0.5 / Steel	4.7 R	C	5757024	40	1.07	YES
1/2" IPS	4" IPS	0.5 / Steel	4.7 R	D	5757025	30	0.96	YES
1/2" IPS	6" IPS	0.5 / Steel	4.7 R	E	5757026	20	1.25	YES
1/2" IPS	8-10" IPS	0.5 / Steel	4.7 R	H	5757236	40	0.80	YES
3/4" CTS	1 1/4" IPS	0.5 / Steel	4.7 R	A	5757160	50	0.00	YES
3/4" CTS	2" IPS	0.8 / Steel	4.7 R	B	5757161	40	0.82	YES
3/4" CTS	3" IPS	0.8 / Steel	4.7 R	C	5757162	-	-	-
3/4" CTS	4" IPS	0.8 / Steel	4.7 R	D	5757163	30	0.96	YES
3/4" CTS	6" IPS	0.8 / Steel	4.7 R	E	5757164	-	-	-
3/4" CTS	8-10" IPS	0.8 / Steel	4.7 R	H	5757167	40	0.79	YES
3/4" IPS	1 1/4" IPS	0.8 / Steel	4.7 R	A	5757084	50	0.79	YES
3/4" IPS	2" IPS	0.8 / Steel	4.7 R	B	5757087	40	0.80	YES
3/4" IPS	2" IPS	0.8 / Steel	4.7 R	Underpart	10009392			YES
3/4" IPS	3" IPS	0.8 / Steel	4.7 R	C	5757088	40	0.88	YES
3/4" IPS	4" IPS	0.8 / Steel	4.7 R	D	5757141	30	0.98	YES
3/4" IPS	4" IPS	0.8 / Steel	4.7 R	Underpart	10009401	30	0.98	YES
3/4" IPS	6" IPS	0.8 / Steel	4.7 R	E	5757143	20	1.15	YES
3/4" IPS	6" IPS	0.8 / Steel	4.7 R	Underpart	10009405	20	1.15	YES
3/4" IPS	8-10" IPS	0.5 / Steel	4.7 R	H	5757237	40	0.80	YES
1" CTS	1 1/4" IPS	0.8 / Steel	4.7 R	A	5757030	50	0.78	YES
1" CTS	2" IPS	0.8 / Steel	4.7 R	B	5757032	40	0.82	YES
1" CTS	2" IPS	0.8 / Steel	4.7 R	Underpart	10009397			CSA
1" CTS	3" IPS	0.8 / Steel	4.7 R	C	5757033	40	0.87	YES
1" CTS	4" IPS	0.8 / Steel	4.7 R	D	5757034	30	1.19	YES
1" CTS	6" IPS	0.8 / Steel	4.7 R	E	5757036	20	1.15	YES
1" CTS	6" IPS	0.8 / Steel	4.7 R	Underpart	10009407	20	1.15	YES
1" CTS	8-10" IPS	0.8 / Steel	4.7 R	H	5757038	40	0.81	YES