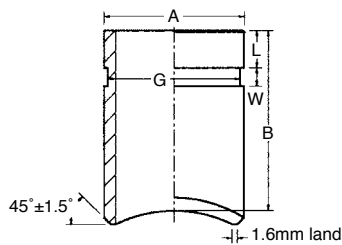


MODEL
72C CUT GROOVED WELDING OUTLET

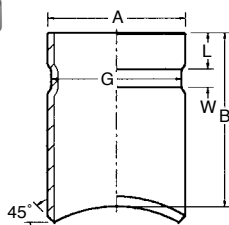
Model 72C Cut Grooved Outlet Fittings are designed to provide a cut grooved outlet at any desired location along the header. Made of standard wall (sch.40) pipe, the Model 72C is recommended for use with Sch. 40 header pipes. The weld end is provided with a 1.6mm land around the full circumference to assure a one-pass full penetration weld. The 72C fittings are recommended for services up to 20 bar (300 psi).



Outlet Size mm/in	Run Pipe in	Dimensions					Approx. Weight Kgs/Lbs
		A mm/in	B mm/in	L mm/in	W mm/in	G mm/in	
50 2	2	60.3	76.2	15.88	7.95	57.15	0.40
	2½						
	3						
	4						
	5						
65 2½	6	73.0	76.2	15.88	7.95	69.09	0.50
	8						
	2½						
	4						
	5						
80 3	6	88.9	76.2	15.88	7.95	84.94	0.91
	8						
	3						
	4						
	5						
100 4	6	114.3	101.6	15.88	9.53	110.08	1.73
	8						
	4						
	5						
	6						
150 6	8	168.3	101.6	15.88	9.53	163.96	3.18
	8						
	8						
200 8	8	6.625	4.000	0.625	0.375	6.460	7.00
	8						
	8						
200 8	8	219.1	101.6	19.05	11.13	214.40	4.32
	8						
	10						
200 8	8	8.625	4.000	0.750	0.438	8.440	9.50
	8						
	8						

MODEL
72R ROLL-GROOVED WELDING OUTLET

Model 72R Roll Grooved Outlet Fittings are designed to provide a roll grooved outlet at any desired location along the header. Made of Sch. 10 pipe, the 72R R-Let is recommended for use with light wall pipes to minimize the likelihood of burn-through and or distortion of the header pipe. The 72R fittings are recommended for services up to 20 bar (300 psi).



Outlet Size mm/in	Run Pipe in	Dimensions					Approx. Weight Kgs/Lbs
		A mm/in	B mm/in	L mm/in	W mm/in	G mm/in	
32 1¼	1¼	42.2	76.2	15.88	7.14	38.99	0.15
	1½						
	2						
	2½						
	3						
40 1½	4	48.3	76.2	15.88	7.14	45.09	0.18
	5 - 8						
	1½						
	2						
	2½						
50 2	3	60.3	76.2	15.88	8.74	57.15	0.29
	4						
	5						
	6						
	8						
65 2½	2½	73.0	76.2	15.88	8.74	69.09	0.51
	3						
	4						
	5						
	6						
76.1mm	8	76.1	76.2	15.88	8.74	72.26	0.51
	3						
	4						
	5						
	6						
80 3	8	88.9	76.2	15.88	8.74	84.94	0.56
	3						
	4						
	5						
	6						
100 4	8	114.3	114.3	15.88	8.74	110.08	0.94
	4						
	5						
100 4	6	4.500	4.500	0.625	0.344	4.314	2.07
	6						
	8						