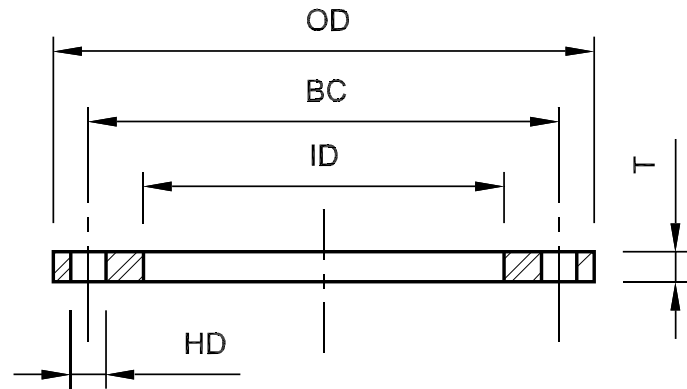


PLATE FLANGES

304L & 316L STAINLESS STEEL

- Dimensions are given in inches.
- All plate flanges are flat face.
- Lap Joint application (as back-up) for use with flat or angle type face rings can be furnished upon request.
- Drilling is 150# class.
- For 14" and larger product, please refer to the appropriate pipe section in the front of the catalog.



NOMINAL TUBE SIZE	LBS	ID	OD	T (PLATE FLG)	T (SS BU FLG)	BC	HD	BOLT SIZE	NUMBER OF BOLT HOLES
1	1.80	1.030	4 1/8	1/2	1/2	3 1/8	5/8	1/2	4
1 1/4	2.20	1.280	4 5/8	1/2	1/2	3 1/2	5/8	1/2	4
1 1/2	2.50	1.530	5	1/2	1/2	3 7/8	5/8	1/2	4
2	3.50	2.030	6	1/2	1/2	4 3/4	3/4	5/8	4
2 1/2	4.80	2.530	7	1/2	1/2	5 1/2	3/4	5/8	4
3	5.30	3.030	7 1/2	1/2	1/2	6	3/4	5/8	4
4	7.20	4.030	9	1/2	1/2	7 1/2	3/4	5/8	8
5	8.20	5.030	10	1/2	1/2	8 1/2	7/8	3/4	8
6	9.30	6.030	11	1/2	1/2	9 1/2	7/8	3/4	8
8	13.30	8.030	13 1/2	1/2	1/2	11 3/4	7/8	3/4	8
10	21.10	10.030	16	5/8	5/8	14 1/4	1	7/8	12
12	30.00	12.060	19	5/8	5/8	17	1	7/8	12

