

Fig. 212

Medium Pipe Clamp

Size Range: 2" through 30"

Material: Carbon steel

Finish: Plain or Galvanized

Maximum Temperature: Plain 750° F, Galvanized 450° F

Service: Pipe clamp for figure numbers 257, 436, and 439 slides and tees.

Ordering: Specify pipe size, figure number, name and finish.

Note: Two clamps are required. "T" section 257/436 or "H" section 439 are notched to accommodate clamps and to eliminate the increase in height of the slide assembly.

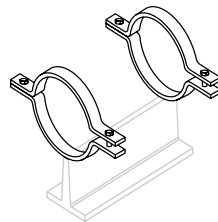
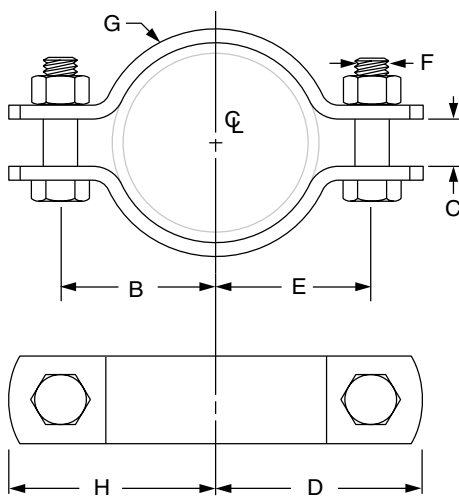


Fig. 257
w/ Fig 212 Clamps

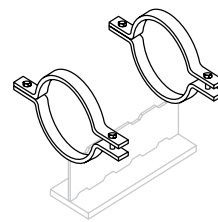


Fig. 436
w/ Fig 212 Clamps

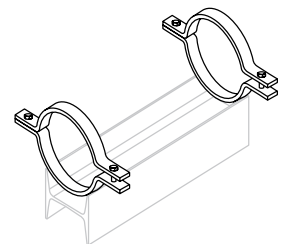


Fig. 439
w/ Fig 212 Clamps

FIG. 212: WEIGHT (LBS) • DIMENSIONS (IN)

Pipe Size	B	C	D	E	H	F	G Width	Weight		
2	2 $\frac{1}{8}$	$\frac{1}{2}$	2 $\frac{3}{4}$	2 $\frac{1}{8}$	2 $\frac{3}{4}$	$\frac{1}{2}$	1	2.2		
2 $\frac{1}{2}$	2 $\frac{5}{8}$	$\frac{5}{8}$	3 $\frac{1}{4}$	2 $\frac{5}{8}$	3 $\frac{1}{4}$			2.4		
3	2 $\frac{7}{8}$		3 $\frac{1}{2}$	2 $\frac{7}{8}$	3 $\frac{1}{2}$			2.8		
3 $\frac{1}{2}$	3 $\frac{3}{16}$		3 $\frac{13}{16}$	3 $\frac{3}{16}$	3 $\frac{13}{16}$			3.0		
4	3 $\frac{1}{2}$	$\frac{3}{4}$	4 $\frac{1}{4}$	3 $\frac{1}{2}$	4 $\frac{1}{4}$	$\frac{5}{8}$	1 $\frac{1}{4}$	4.6		
5	4 $\frac{3}{16}$		4 $\frac{15}{16}$	4 $\frac{3}{16}$	4 $\frac{15}{16}$			5.2		
6	4 $\frac{7}{8}$		5 $\frac{3}{4}$	4 $\frac{7}{8}$	5 $\frac{3}{4}$			10.8		
8	6	1 $\frac{1}{4}$	6 $\frac{7}{8}$	6	6 $\frac{7}{8}$	$\frac{3}{4}$	1 $\frac{1}{2}$	13.0		
10	7 $\frac{7}{16}$	1	8 $\frac{9}{16}$	7 $\frac{7}{16}$	8 $\frac{9}{16}$			$\frac{7}{8}$	2	27.2
12	8 $\frac{7}{16}$		9 $\frac{9}{16}$	8 $\frac{7}{16}$	9 $\frac{9}{16}$	30.4				
14	9 $\frac{1}{4}$		1 $\frac{1}{8}$	10 $\frac{5}{8}$	9 $\frac{1}{4}$	10 $\frac{5}{8}$	1			2 $\frac{1}{2}$
16	10 $\frac{1}{4}$	11 $\frac{1}{8}$		10 $\frac{1}{4}$	11 $\frac{5}{8}$	44.6				
18	11 $\frac{1}{8}$	1 $\frac{1}{4}$	13	11 $\frac{1}{8}$	13	1		3	63.2	
20	12 $\frac{3}{4}$		14 $\frac{1}{8}$	12 $\frac{3}{4}$	14 $\frac{1}{8}$				71.6	
24	15 $\frac{1}{4}$	1 $\frac{5}{8}$	16 $\frac{7}{8}$	15 $\frac{1}{4}$	16 $\frac{7}{8}$	1 $\frac{1}{4}$	4	106.2		
30	19	2	21 $\frac{1}{8}$	19	21 $\frac{1}{8}$			1 $\frac{1}{4}$	227.8	

•Clamps may be furnished with square ends.