



REPLACEMENT RESIDENTIAL AUTOMATIC SPRINKLERS MODEL GL2810 LOW FLOW PENDENT RECESSED PENDENT

DESCRIPTION AND OPERATION

The Globe Model GL2810 Low Flow Residential Sprinkler is a low profile yet durable design which utilizes a 3mm frangible glass ampule as the thermosensitive element. It features both economy and aesthetics.

The combination of the 3mm frangible glass ampule and innovative deflector design make the Model GL2810 Low Flow Residential Sprinkler the ultimate in life safety and fire control. The Globe Pendent and Recessed Pendent Model GL2810 Low Flow Residential Sprinklers have met the strict requirements of Underwriters Laboratories Inc. as described in the UL Standard for Residential Sprinklers for Fire Protection Service, UL 1626, and should be used accordingly. These sprinklers should also be installed in accordance with the appropriate NFPA Standard 13, 13D or 13R and under the direction of the approving authorities having jurisdiction.

The heart of Globe's Model GL2810 sprinkler proven actuating assembly is a hermetically sealed frangible glass ampule that contains a precisely measured amount of fluid. When heat is absorbed, the liquid within the bulb expands increasing the internal pressure. At the prescribed temperature the internal pressure within the ampule exceeds the strength of the glass causing the glass to shatter. This results in water discharge which is distributed in an approved pattern.

TECHNICAL DATA

- See reverse side for Approvals and Specifications.
- Temperature Rating - 155°F (68°C), 175°F (79°C).
- Water Working Pressure Rating - 175 psi (12 Bars).
- Factory tested hydrostatically to 500 psi (34 Bars).
- Maximum low temperature glass bulb rating is -67°F (-55°C).
- Frame - bronze • Deflector - brass • Screw - brass
- Bulb seat - copper • Spring - nickel alloy • Seal - teflon
- Bulb - glass with alcohol based solution, 3mm size.
- Escutcheon Assembly - steel

• SPRINKLER TEMPERATURE RATING/CLASSIFICATION and COLOR CODING

CLASSIFICATION	AVAILABLE SPRINKLER TEMPERATURES		BULB COLOR	N.F.P.A. MAXIMUM CEILING TEMPERATURE	
ORDINARY	155°F	68°C	RED	100°F	38°C
INTERMEDIATE	175°F	79°C	YELLOW	150°F	66°C



RESIDENTIAL
PENDENT



RESIDENTIAL
RECESSED PENDENT

REPLACEMENT RESIDENTIAL AUTOMATIC SPRINKLERS MODEL GL2810 LOW FLOW PENDENT • RECESSED PENDENT

SPECIFICATIONS AND APPROVALS

SIN MODEL	K FACTOR	THREAD SIZE	LENGTH	FINISHES	155°F 68°C	175°F 79°C	cULus
GL2810	2.8 (40 metric)	1/2" NPT	2 1/4" (5.7 cm)	Factory Bronze *Satin Chrome Bright Chrome White Polyester+ Black Polyester+ *Lead Coated	X	X	X

NOTE: METRIC CONVERSIONS ARE APPROXIMATE.

*FINISHES AVAILABLE ON SPECIAL ORDER.
+AVAILABLE AS U.L. AND C-U.L. LISTED CORROSION
RESISTANT WHEN SPECIFIED ON ORDER.

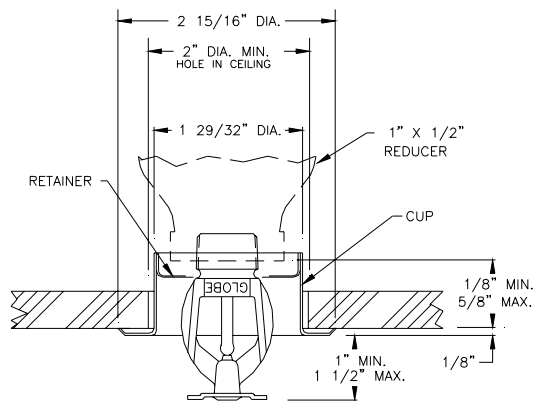
INSTALLATION DATA

PENDENT AND RECESSED PENDENT SPRINKLER

SIN MODEL	MAXIMUM AREA OF COVERAGE	MINIMUM WATER DISCHARGE & PRESSURES NEEDED*	
		SINGLE SPRINKLER	TWO SPRINKLERS
GL2810	12' x 12'	10 G.P.M. - 12.7 PSI.	8 G.P.M. - 8.2 PSI. (EACH)
	14' x 14'	10 G.P.M. - 12.7 PSI.	8 G.P.M. - 8.2 PSI. (EACH)
	16' x 16'	11 G.P.M. - 15.4 PSI.	11 G.P.M. - 15.4 PSI. (EACH)
	18' x 18'	13 G.P.M. - 21.6 PSI.	13 G.P.M. - 21.6 PSI. (EACH)
	20' x 20'	16 G.P.M. - 32.7 PSI.	16 G.P.M. - 32.7 PSI. (EACH)

*WHEN THESE SPRINKLERS ARE USED IN NFPA 13 SYSTEMS, A 0.1 DESIGN DENSITY MINIMUM SHALL BE UTILIZED.

CROSS SECTION



RECESSED PENDENT

ORDERING INFORMATION

SPECIFY

- Quantity • Model Number • Style
- Orifice • Temperature • Finishes desired
- Quantity - Wrenches - P/N 325390
- Quantity - Recessed Wrenches - P/N 325391
- Quantity - Protective Caps - P/N 327109-CAP (Friction Fit Recessed)

GLOBE® PRODUCT WARRANTY

Globe agrees to repair or replace any of its own manufactured products found to be defective in material or workmanship for a period of one year from date of shipment.

For specific details of our warranty please refer to Price List Terms and Conditions of Sale (Our Price List).

4077 AIRPARK DRIVE, STANDISH, MICHIGAN 48658

989-846-4583

1-800-248-0278

FAX 989-846-9231

www.globesprinkler.com



OCTOBER 2003

PRINTED U.S.A.

BULLETIN GL2810, REV. #2