

## Pipe Covering Protection Saddle For Nominal Thickness of Covering Shown

**Fig. 160: 1"**

**Fig. 163: 2½"**

**Fig. 165A: 4" (Alloy)**

**Fig. 161: 1½"**

**Fig. 164: 3"**

**Fig. 166A: 5½" (Alloy)**

**Fig. 162: 2"**

**Fig. 165: 4"**

**Size Range:** ¾" through 36"

**Material:**

- Figs. 160, 161, 162, 163, 164, and 165 are curved carbon steel plate.
- Figs. 165A and 166A are alloy steel manufactured from ASTM A 387 Grade 22 Chrome Molybdenum steel plate.
- Figs. 165A and 166A have a welded-in center plate in all sizes.
- All other saddles have a welded-in center plate for pipe sizes 12" and larger.
- All saddles are 12" long with side edges turned up.

**Finish:** Plain

**Service:** Designed for use on insulated high temperature systems where heat losses are to be kept to a minimum and to protect insulation against damage.

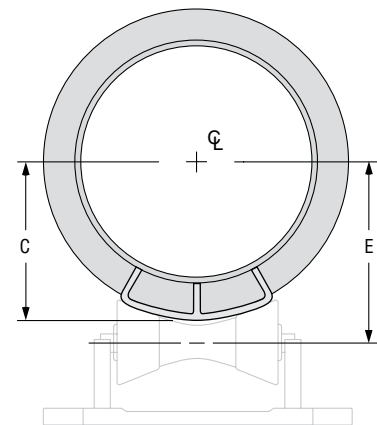
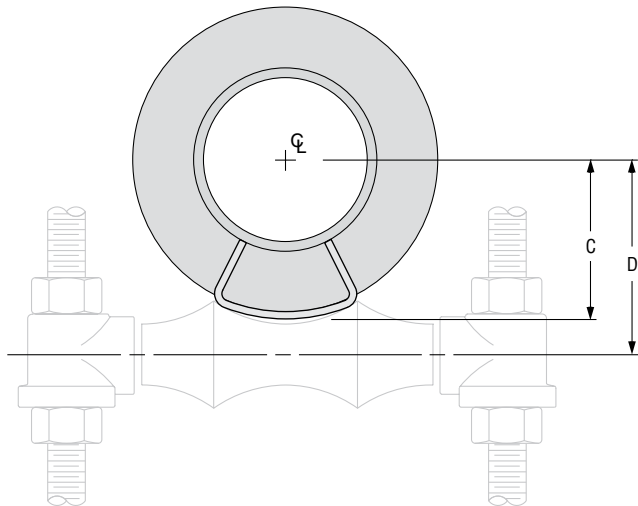
**Maximum Temperature:** 650° F carbon steel, 950° F alloy steel.

**Approvals:** Complies with Federal Specification A-A-1192A (Type 39A & 39B), WW-H-171-E (Type 40A & 40B), ANSI/MSS SP-69 and MSS SP-58 (Type 39A & 39B).

**Features:** Permits finished, weather tight covering at all points of pipe support.

**Ordering:** Specify pipe size, figure number and name. Data for 42" size available on request.

**Installation:** It is recommended that saddle be welded to the pipe.



Continued on Following Page.