

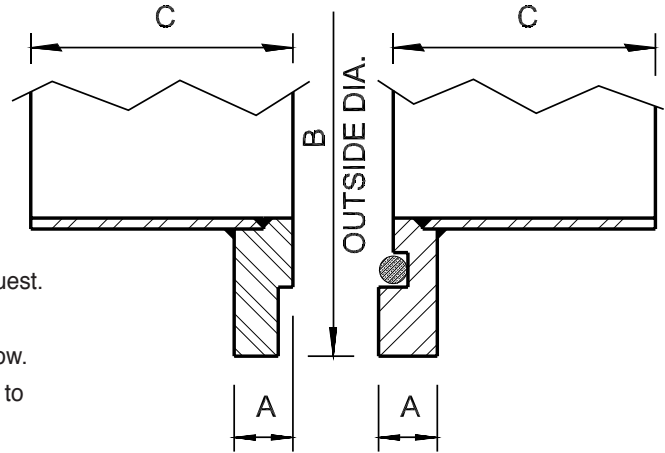
METAL TO METAL CONNECTORS

304L & 316L STAINLESS STEEL

A Metal to Metal Connector consists of one pair of stub ends (one male and one female) and a 1/8" diameter 60 durometer neoprene o-ring.

Metal to Metal Connectors can be joined by means of a Felker Metal to Metal Clamp or by using two standard Felker Back-Up Flanges.

- Manufactured in accordance to ASTM A-774 specifications.
- OD and wall thickness are given in inches.
- Sizes larger than 36" and special lengths are available upon request.
- Manufactured to MSS dimensions.
- METAL TO METAL SEATING - No gasket protrusion to restrict flow.
- ADAPTERS AVAILABLE - Convert flanges on pumps and valves to mate with metal to metal connectors.
- For 14" and larger product, please refer to the appropriate pipe section in the front of the catalog.



| NOMINAL TUBE SIZE | OD | A | B | C | A-774 GAUGE METAL TO METAL CONNECTORS | | | | |
|-------------------------|--------|------|--------|-------|---------------------------------------|--------------|--------------|--------------|-------------|
| | | | | | 14GA .078 | 12GA .109 | 11GA .125 | 10GA .140 | 8GA .172 |
| 3 | 3.000 | .312 | 4.750 | 2.500 | 1.40 | 1.60 | - | - | - |
| 4 | 4.000 | .312 | 5.750 | 3.000 | 1.95 | 2.25 | - | - | - |
| 5 | 5.000 | .312 | 6.750 | 3.000 | 2.60 | 3.30 | - | - | - |
| 6 | 6.000 | .312 | 7.750 | 3.500 | 3.05 | 3.55 | 3.90 | 4.20 | - |
| 8 | 8.000 | .312 | 10.000 | 4.000 | 4.65 | 5.45 | 5.90 | 6.35 | - |
| 10 | 10.000 | .437 | 12.000 | 5.000 | 7.70 | 8.95 | 9.75 | 10.45 | 11.95 |
| 12 | 12.000 | .437 | 14.250 | 6.000 | 10.75 | 12.50 | 13.70 | 14.70 | 16.85 |

