

Fig. 192

Adjustable Pipe Saddle Support

Size Range: 2" through 12"

Material: Carbon steel

Finish: Plain or Galvanized

Service: Stanchion type support for **stationary** pipe where vertical adjustment is required.

Approvals: Complies with Federal Specification A-A-1192A (Type 38), ANSI/MSS SP-69 and MSS SP-58 (Type 38).

Ordering: Specify pipe size to be supported, figure number, name and finish.

FIG. 192: WEIGHTS (LBS) • DIMENSIONS (IN)

Pipe Size	Rod Size A	E	G	Weight
2	5/8	9 ⁷ / ₁₆	1/4 x 1	1.0
2 1/2		9 ¹ / ₁₆		1.4
3		10		1.6
3 1/2		10 1/4		2.6
4	7/8	10 1/2	1/4 x 1 1/4	3.0
5		11		3.2
6	1	11 11/16	3/8 x 1 1/2	4.9
8		12 11/16		6.2
10	1 1/4	13 3/8	1/2 x 2	10.5
12		14 7/8		11.8

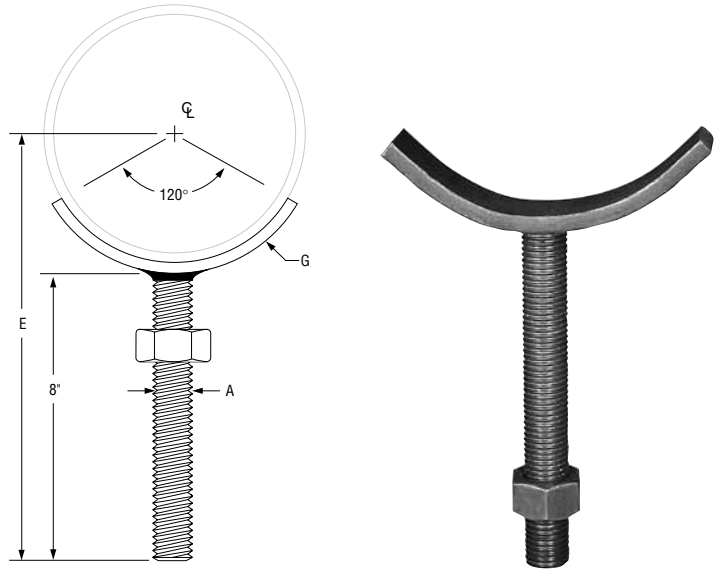


Fig. 191

Adjustable Pipe Stanchion Saddle with U-Bolt

Size Range: 2" through 12"

Material: Carbon steel

Finish: Plain or Galvanized

Service: Stanchion type support where vertical adjustment is required, plus the additional **stability** provided by U-bolt attachment to **stationary** pipe.

Approvals: Complies with Federal Specification A-A-1192A (Type 37), ANSI/MSS SP-69 and MSS SP-58 (Type 37).

Ordering: Specify pipe size, figure number, name and finish.

FIG. 191: WEIGHTS (LBS) • DIMENSIONS (IN)

Pipe Size	Rod Size A	C	E	G	Weight
2	5/8	2 ¹¹ / ₁₆	9 ⁷ / ₁₆	1/4 x 1	1.2
2 1/2		3 ⁵ / ₁₆	9 ¹ / ₁₆		1.4
3		3 ¹⁵ / ₁₆	10		1.6
3 1/2		4 ⁷ / ₁₆	10 1/4		2.6
4	7/8	5 ¹ / ₄	10 1/2	1/4 x 1 1/4	3.0
5		6 ¹ / ₈	11		3.2
6	1	7 ¹ / ₄	11 11/16	3/8 x 1 1/2	4.9
8		9 ³ / ₈	12 11/16		6.2
10	1 1/4	11 1/2	13 3/8	1/2 x 2	10.5
12		13 1/2	14 7/8		11.8

