

Fig. 286 (Formerly Fig. 283)

Iron Cross

Size Range: 3/4" through 1 1/2"

Material: Stainless steel body, fiberglass bars, polypropylene disc

Service: Upper attachment for suspending pipe or equipment from concrete ceiling.

Approvals: Complies with Federal Specification A-A-1192A (Type 18) WW-H-171-E (Type 18), ANSI/MSS SP-69 and MSS SP-58 (Type 18).

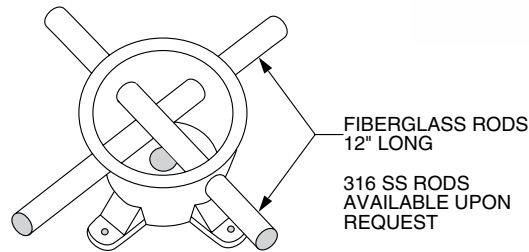
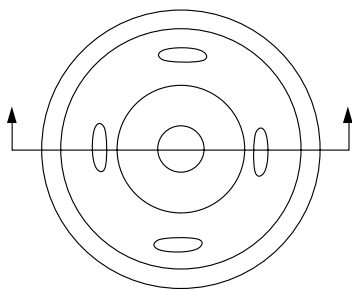
Installation:

1. Nail insert to wooden forms.
2. Locate fiberglass bars to rest upon existing reinforcing rods or wire the insert directly into existing reinforced rods to achieve the specified load ratings.

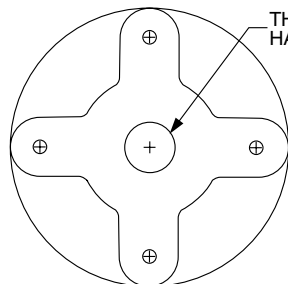
Features:

- Stainless steel body prevents corrosion.
- Cone shaped body.
- Exceptional pullout strength.
- Eliminates uncertainty of tying conventional inserts into bridge deck rebars.

Ordering: Specify figure number, name and rod size.



FIBERGLASS RODS
12" LONG
316 SS RODS
AVAILABLE UPON
REQUEST



THREADED HOLE FOR
HANGER ROD

NAIL MOUNTING
HOLES (4)

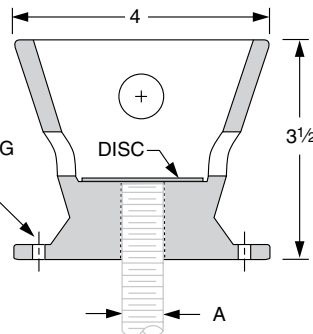


FIG. 286:

Rod Size A	Max Load (lbs) ■
3/4	3,230
7/8	4,480
1	5,900
1 1/4	9,500
1 1/2	13,800

■ Based on the rod diameter only.
Rating is subject to the conditions
that the concrete used is of sufficient
strength to hold the insert.