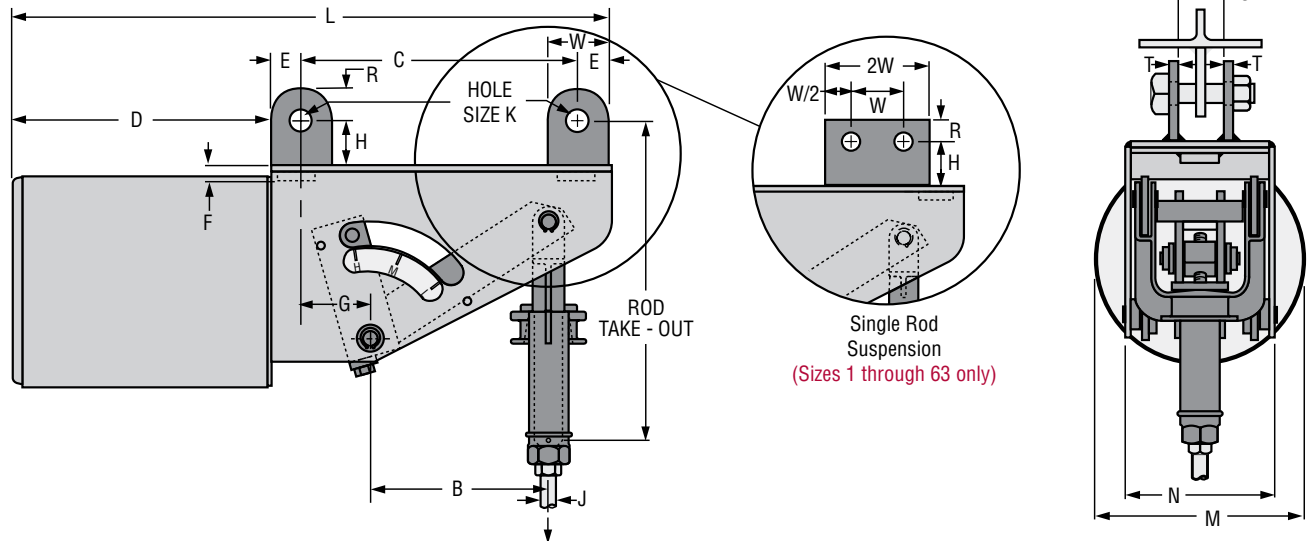


Fig. 81-H Type C

Model R



Type C is furnished with two pair of lugs, one pair of lugs at each of the hanger frame. These lugs permit the use of two eye rods or two single plates for attachment where headroom is limited. Sizes 1 to 9 are furnished with swivel eye and turnbuckle instead of yoke and coupling.

Notes: Also available for single rod suspension as indicated above. When ordering specify "for single rod suspension." See load travel tables, page 160 through 163 for "B" dimension. For weights see page 178. Location of travel indicator and contour of side plate may vary from that shown.

FIG. 81-H TYPE C: DIMENSIONS (INCHES)

Hanger Sizes	D	E	F	G	H	M	N	Total Travel TT	L	C	Factors	J-Rod		
												Min Thd Length	Rod Dia.	
												Min	Max	
1 - 9	8¼	1¼	7/8	1¼	1½	6⅞	4⅞	4 or less	16¼	5½	14⅞	1¾ + TT	½	½
								4½ or more	20¾	9½	17⅞			
10 - 18	8⅞	1¼	½	2⅞	1½	8⅞	6⅞	5 or less	18⅞	7½	13⅞	1¾ + TT	½	¾
								5½ or more	21⅞	10½	15⅞			
19 - 34	14⅞	2	5/8	3⅞	2	12⅞	8⅞	5 or less	26⅞	8½	19⅞	2⅞ + TT	½	1¼
								5½ or more	31⅞	12⅞	22			
35 - 49	17⅞	2½	1⅞	4	3	13¾	9⅞	6 or less	31⅞	9½	25⅞	3¼ + TT	½	1¾
								6½ or more	39⅞	17½	30⅞			
50 - 63	26⅞	3	1⅞	6⅞	4	17⅞	11¼	8 or less	45⅞	13⅞	30⅞	4¼ + TT	¾	2¼
								8½ to 11	53⅞	21⅞	36			
64 - 74	35¾	4	3¼	4¼	4½	22⅞	11	10½ or less	57½	13¾	42⅞	5¾ + TT	1¼	2¾
								11 or more	63	19¼	42½			
75 - 83	35¾	4½	3⅞	3¾	5	27⅞	11	10½ or less	57½	12¾	45¾	5¾ + TT	1½	3¼
								11 or more	63	18¼	45¾			

84 - 110 See page 177

* Rod take-out = (factor) - (TT / 2), for lever in high position.

J-ROD AND K-HOLE SELECTION CHART

Load (lbs)	0 800	801 1,500	1,501 2,540	2,541 4,000	4,001 6,100	6,101 9,400	9,401 13,400	13,401 18,300	18,301 24,700	24,701 31,000	31,001 39,000	39,001 48,000	48,001 58,000
J-Rod	½	5/8	¾	1	1¼	1½	1¾	2	2¼	2½	2¾	3	3¼**
K-Hole Size	1⅞	1⅞	1⅞	1¼	1½	1¾	2	2⅞	2⅞	2⅞	3⅞	3⅞	3⅞
R	1¼	1¼	1¼	1½	2	2½	2½	3	3	4	4	4	4½
S	7/8	1⅞	1¼	1⅞	2	2⅞	2⅞	2⅞	3⅞	3⅞	3⅞	3⅞	4⅞
T	¼*	¼*	3/8	½	5/8	¾	¾	¾	¾	1	1	1	1
W	2½	2½	2½	3	4	5	5	6	6	8	8	8	9

* ¾" for single rod suspension ** 3¼" is furnished with 8 UN series thread.