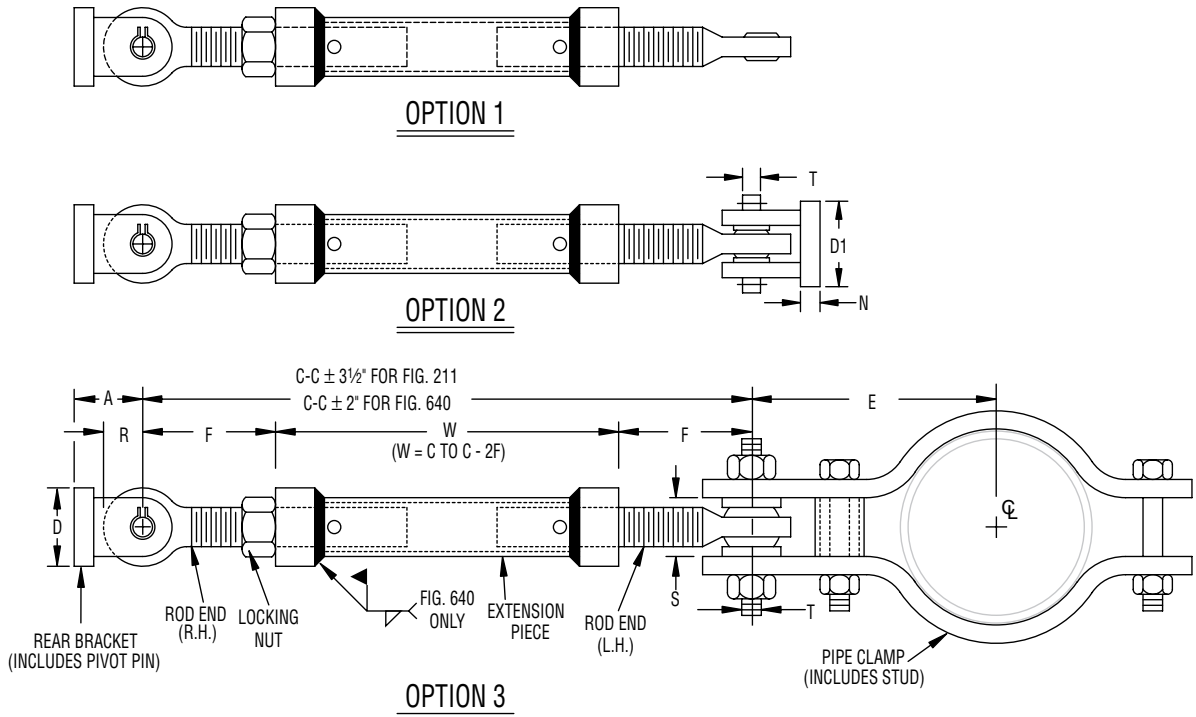


**Fig. 211, Fig. C-211**  
**Fig. 640, Fig. C-640: Field Welded Strut**

Sway Strut Assembly



**FIG. 211, C-211, FIG. 640 & FIG. C-640: LOAD (LBS) • DIMENSIONS (IN)**

Size	Fig. 211 & Fig. 640										Fig. 211					Fig. 640			
	Load ■	Rod End	Ext. Piece	A	D	D1	N	R	S	T	C-C		W		F	Weld Z	C-C		F
											Max	Min	Max	Min			Max	Min	
A	650	3/4	1	1		1 1/4	1/4	5/8	5/8	0.374 0.372	60	16 1/2	53 3/8	9 3/8	3 1/16	3/16	60	12 1/8	2 11/16
B	1,500	1	1 1/2			2 3/8	5/8	1 3/8		0.749 0.747	108	19	99 3/8	10 3/8	4 7/16			14 7/16	3 11/16
C	4,500	1	2	2 1/2	2	2 3/8	3/4	1 1/2	1 3/8	0.749 0.747	21	110 3/8	11 3/8	4 7/8	5/16	96	16 1/2	4 3/8	
1	8,000	1 1/4								0.999 0.997									21
2	11,630	1 1/2	2 1/2	3	3	3 3/16	3/4	2	1 11/16	0.999 0.997	21 3/8	110	11 3/8	5	5/16	96	16 7/8	4 1/4	
3	15,700	1 3/4								1.249 1.247									22 7/8
4	20,700	2	3	4	6 3/8	4 1/4	1 1/4	2 1/2	2	1.249 1.247	25	108	6	3/8	96	20 1/2	5 1/4		
5	27,200	2 1/4								1.499 1.497								26 1/2	106 1/2
6	33,500	2 1/2	4	5	7 7/8	5 3/8	1 3/4	3	2 3/8	1.749 1.747	28 1/4	104 3/4	7 5/8	5/8	96	23 3/4	6 7/8		
7	68,200	3								1.999 1.997								32 1/2	102 1/2
8	120,000	4	6	7 1/4	14	8 3/4	2 1/4	4 3/4	3 3/8	2.499 2.497	39 1/4	98	17 1/4	3/4	96	34 3/4	10 1/4		

■ Loads must not be applied outside a 10° included angle cone of action to the pipe clamp axis without special authorization.  
 Fig. 640 shipped at maximum length C-C, field cut to "W" to suit, unless otherwise specified.