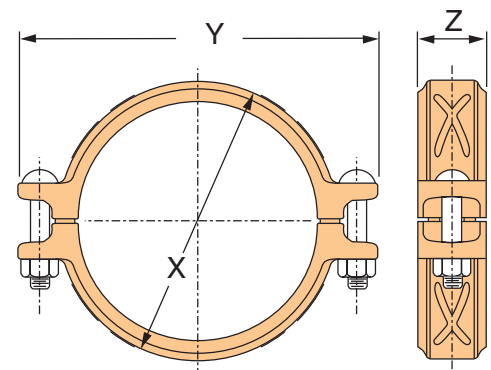


FIG. 6400

Rigid Coupling

The Figure 6400 Rigid Coupling is specially designed to provide a rigid pipe connection to meet the specific demands of copper tubing installation size 2"-8". Fast and easy swing-over installation of the rugged lightweight housing produces a secure rigid pipe joint. Available with Grade "E" Copper EPDM flush gap style gasket. Gasket has service temperature range of -40°F to +230°F. NSF 61 Certified for cold +86°F (+30°C) and hot +180°F (+82°C) potable water service.



MATERIAL SPECIFICATIONS

HOUSING:

Ductile iron conforming to ASTM A-536, Grade 65-54-12

COATINGS:

Rust inhibiting enamel paint — Color: Copper
For other coating requirements contact your Anvil Representative.

ANSI BOLTS AND HEAVY HEX NUTS:

Heat treated carbon steel oval neck bolts conforming to the physical properties of ASTM A 183 with a minimum tensile strength of 110,000 PSI. Bolts and nuts are provided zinc electroplated as standard.

GASKETS:

Grade "EP" EPDM Flush Gap Gasket (Green and Red Color Code)
Service Temperature Range: -40°F to +250°F (-40°C to +121°C)
Recommended for water service, diluted acids, alkaline solutions, oil-free air and many chemical services. NOT FOR USE IN PETROLEUM APPLICATIONS.

NSF 61 Certified for cold +86°F (+30°C) and hot +180°F (+82°C) potable water service.

FIGURE 6400 RIGID COUPLING										
Nominal Size	Copper Tube Diameter	Max Wk. Pressure	Max End Load	Range of Pipe End Separation	Coupling Dimensions			Coupling Bolts		Approx. Wt. Ea.
					X	Y	Z	Qty.	Size	
<i>In.</i>	<i>In./mm</i>	<i>PSI/bar</i>	<i>Lbs./kN</i>	<i>In./mm</i>	<i>In./mm</i>				<i>In./mm</i>	<i>Lbs./Kg</i>
2	2.125 54.0	300 20.7	1063 4.73	0 - 0.08 0 - 2.0	3.00 76	5.00 127	1.68 43	2	3/8 x 2 1/4	1.53 0.69
2 1/2	2.625 66.7	300 20.7	1623 7.22	0 - 0.08 0 - 2.0	3.50 89	5.50 140	1.68 43	2	3/8 x 2 1/4	1.78 0.81
3	3.125 79.4	300 20.7	2300 10.23	0 - 0.08 0 - 2.0	4.18 106	6.28 159	1.68 43	2	1/2 x 3	2.76 1.25
4	4.125 104.8	300 20.7	4007 17.82	0 - 0.13 0 - 2.4	5.20 132	7.50 191	1.70 43	2	1/2 x 3	3.27 1.48
5	5.125 130.2	300 20.7	6186 27.51	0 - 0.13 0 - 2.4	6.20 157	9.10 231	1.80 46	2	5/8 x 3 1/4	4.71 2.14
6	6.125 155.6	300 20.7	8835 39.30	0 - 0.13 0 - 2.4	7.20 183	10.20 259	1.80 46	2	5/8 x 3 1/4	5.24 2.38
8	8.125 206.4	300 20.7	15547 69.15	0 - 0.13 0 - 2.4	9.32 237	12.40 315	2.00 51	2	5/8 x 3 1/4	7.67 3.48

Pressure ratings and end loads are based on use with ASTM B88 Type K or L tubing. For pressure ratings on Type M and DWV, contact your Anvil Representative. See Installation & Assembly directions on page 161.

- Introduction
- Couplings
- Outlets
- Fittings
- Valves & Accessories
- High Pressure
- Advanced Copper Method (IPS)
- CTS Copper System
- DI-LOK® Nipples
- Plain-End Fittings
- HDPE Couplings
- Socket® Fittings
- Stainless Steel Method
- Roll Groovers
- Installation & Assembly
- Special Coatings
- Design Services
- Technical Data
- Master Format 3 Part Specs.
- Pictorial Index