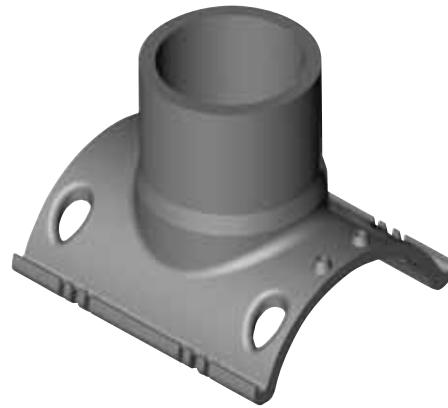


# Electrofusion Fittings: Branch Saddles



(PE3408/PE4710) ELECTROFUSION BRANCH SADDLES (full pressure)

Outlet Size	Main Size	Pin Type	Clamp Type	Part Number	Pack. Qty.	Wt.	AWWA
4" IPS	4" IPS	4.7 R	F	10004529	8	0.12	YES
4" IPS	6" IPS	4.7 R	G	10004539	8	3.85	YES
4" IPS	8" IPS	4.7 S	underpart kit	10006453	-	-	YES
4" IPS	10" IPS	4.7 S	underpart kit	10006457	-	-	YES
4" IPS	12" IPS	4.7 S	underpart kit	10006463	-	-	YES
4" DIPS	8" DIPS	4.7 S	underpart kit	10006469	-	-	YES
4" DIPS	10" DIPS	4.7 S	underpart kit	10006473	-	-	YES
4" DIPS	12" DIPS	4.7 S	underpart kit	10006477	-	-	YES
6" IPS	8" IPS	4.7 S	underpart kit	10006455	-	-	YES
6" IPS	10" IPS	4.7 S	underpart kit	10006459	-	-	YES
6" IPS	12" IPS	4.7 S	underpart kit	10006465	-	-	YES
6" DIPS	8" DIPS	4.7 S	underpart kit	10006471	-	-	YES
6" DIPS	10" DIPS	4.7 S	underpart kit	10006475	-	-	YES
6" DIPS	12" DIPS	4.7 S	underpart kit	10006479	-	-	YES
8" IPS	10" IPS	4.7 S	underpart kit	10006461	1	-	YES
8" IPS	12" IPS	4.7 S	underpart kit	10006467	1	-	YES

Call for availability of other sizes and dimensions.

4.7R = 4.7 Pin with Resistor

4.7S = 4.7 Solid Pin