

MODEL

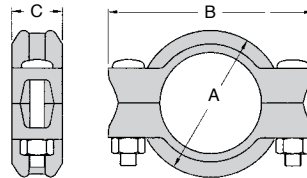
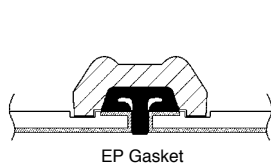
XH-70EP EXTRA HEAVY RIGID COUPLING With End Protection (EP) Gasket

The Model XH-70EP is designed for use with plastic coated or cement lined pipe. The EP (end protection) gasket serves to form a continuous lined surface at the joint and also helps protect the pipe ends from

corrosion. This coupling is rated up to 2500 psi (175 bar) when used in conjunction with machined EP cut grooves and the applicable pipe.



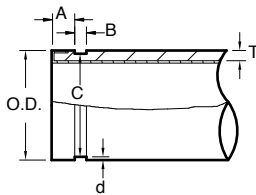
CAUTION: Always fasten the bolts to the required torque.



Nominal Size mm / in	Pipe O. D. mm / in	Max. Working Pressure Bar / PSI	Max. End Load kN / Lbs	Dimensions			Bolt / Nut		Torque N-m / Lbs - Ft	Bolt Weight Kgs / Lbs
				A mm / in	B mm / in	C mm / in	No.	Size in		
50	60.3	175	50	90	150	49	2	5/8 x 2 3/4	80 - 120	1.6
2	2.375	2500	11070	3.54	5.90	1.92			60 - 90	3.4
65	73.0	175	73.2	103	168	49	2	5/8 x 2 3/4	80 - 120	1.7
2 1/2	2.875	2500	16220	4.06	6.61	1.92			60 - 90	3.8
80	88.9	175	108.6	122	188	51	2	5/8 x 2 3/4	80 - 120	2.2
3	3.500	2500	24040	4.80	7.40	2.00			60 - 90	4.8
100	114.3	175	179.5	157	222	55	2	3/4 x 4 3/4	100 - 135	3.8
4	4.500	2500	39740	6.18	8.74	2.17			74 - 170	8.4
150	168.3	140	311.3	218	295	57	2	7/8 x 5 1/2	170 - 275	8.0
6	6.625	2000	68910	8.58	11.61	2.25			125 - 200	17.6
200	219.1	140	527.6	275	364	70	2	1 x 5 1/2	275 - 400	10.9
8	8.625	2000	116790	10.83	14.33	2.75			200 - 300	24.0
250	273.0	88	514.8	334	424	75	2	1 x 5 1/2	275 - 400	14.2
10	10.750	1250	113400	13.15	16.70	2.95			200 - 300	31.2
300	323.9	88	724.7	390	480	75	2	1 x 5 1/2	275 - 400	16.7
12	12.750	1250	159510	15.35	18.93	2.95			200 - 300	36.7

*Pressures quoted are based on EP cut grooved XS (Sch. 80) pipe.

EP Cut-Groove specification



1. EP cut-grooves are for plastic coated or cement lined pipe to be connected with **Shurjoint XH-70EP** couplings only. Do not roll groove pipe, which can damage the coating or lining and or create flared pipe ends.

2. Always use plain-end square cut pipe. Do not use beveled end pipe.
3. Always use an EP gasket with a XH-70EP coupling. Do not use a standard gasket.
4. The gasket seating area shall be free from deep scores, marks, or ridges that could prevent a positive seal.

Nominal Size mm / in	Pipe O. D.			Gasket Seat A		Groove Width B		Groove Dia. C		Grv. Depth d (ref.)	Min. Wall thickness T mm / in
	Basic mm / in	Tolerance mm / in	mm / in	Basic mm / in	Tol. ±	Basic mm / in	Tol. +0.25/+0.010	Basic mm / in	Tol. +0/+0		
50	60.3	+0.61	-0.61	14.27	±0.25	6.48	-0.13	57.15	-0.38	1.60	3.91
2	2.375	+0.024	-0.024	0.562	±0.010	0.255	-0.005	2.250	-0.015	0.063	0.154
65	73.0	+0.74	-0.74	14.27	±0.25	6.48	-0.13	69.09	-0.46	1.98	4.78
2 1/2	2.875	+0.029	-0.29	0.562	±0.010	0.255	-0.005	27.20	-0.018	0.078	0.188
80	88.9	+0.89	-0.79	14.27	±0.25	6.48	-0.13	84.94	-0.46	1.98	4.78
3	3.500	+0.035	-0.031	0.562	±0.010	0.255	-0.005	3.344	-0.018	0.078	0.188
100	114.3	+1.14	-0.79	15.37	±0.38	7.75	-0.13	110.08	-0.51	2.11	5.16
4	4.500	+0.045	-0.031	0.605	±0.015	0.305	-0.005	4.334	-0.020	0.083	0.203
150	168.3	+1.60	-0.79	15.37	±0.38	7.75	-0.13	163.96	-0.56	2.16	5.56
6	6.625	+0.063	-0.031	0.605	±0.015	0.305	-0.005	6.455	-0.022	0.085	0.219
200	219.1	+1.60	-0.79	18.14	±0.38	10.16	-0.25	214.4	-0.64	2.34	6.05
8	8.625	+0.063	-0.031	0.714	±0.015	0.400	-0.010	8.441	-0.025	0.092	0.238
250	273.0	+1.60	-0.79	18.14	±0.38	10.16	-0.25	268.28	-0.69	2.39	6.35
10	10.750	+0.063	-0.031	0.714	±0.015	0.400	-0.010	10.562	-0.027	0.094	0.250
300	323.9	+1.60	-0.79	18.14	±0.38	10.16	-0.25	318.29	-0.76	2.77	7.09
12	12.750	+0.063	-0.031	0.714	±0.015	0.400	-0.010	12.531	-0.030	0.109	0.279