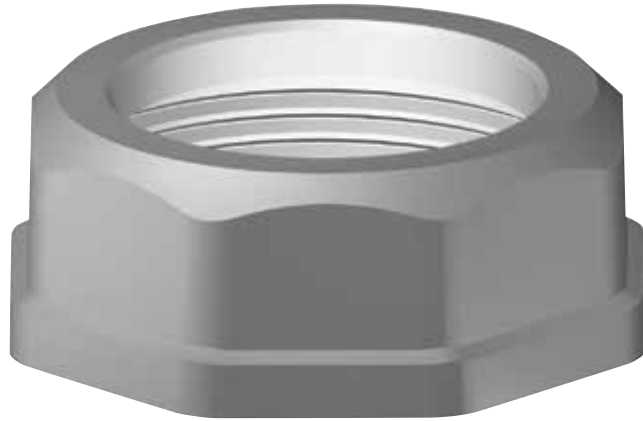


# Meters Swivels: Nuts

Complies with ASTM A197, ANSI B1.20.1 and ANSI B109.1

- Available in Black Malleable Iron (BMI)
- Available in Galvanized Malleable Iron (GMI)



Meter Connection Products

## SWIVEL NUTS

Size	BMI Part Number	Wt.	GMI Part Number	Wt.	Box Qty.
10LT	0150066	.14	0150067	.16	250
20LT	0150068	.24	0150069	.25	150
30LT	0150070	.30	0150071	.31	90
45LT	0150086	.43	0150087	.45	60
60LT	0070016	.48	call	n/a	75
100LT	0100068	1.14	0100069	1.19	30
1A	0170016	.20	0170017	.25	150
#3 (#4)	012SN1150000	.67	012SN1151000	.68	60
5A	call	n/a	0170007	1.62	25
1 1/4"	0160063	.22	0160064	.22	150

For sizes not listed, call for availability.