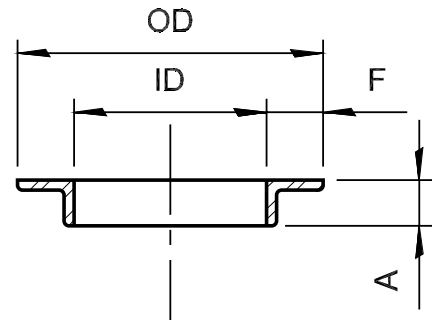
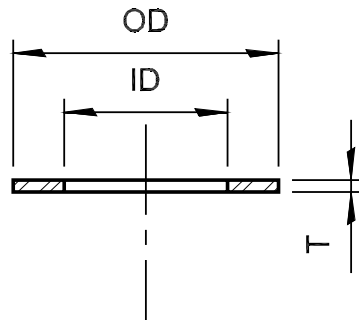


FACE RINGS

316L STAINLESS STEEL

- Dimensions are given in inches.



NOMINAL PIPE SIZE	ID	FLAT FACE RINGS				ANGLE FACE RINGS				
		T 10GA (.140)		T 1/4" (.250)		T	F	A	OD	LBS
		OD	LBS	OD	LBS					
1/2	.875	1.688	.05	-	-	1/8	3/8	1/2	1.625	.10
3/4	1.070	2.000	.07	-	-	1/8	1/2	1/2	2.000	.13
1	1.335	2.500	.09	-	-	1/8	9/16	1/2	2.500	.20
1 1/4	1.688	2.500	.11	-	-	1/8	1/2	1/2	2.750	.22
1 1/2	1.920	3.000	.17	-	-	1/8	5/8	7/16	3.180	.26
2	2.400	4.000	.32	-	-	1/8	11/16	7/16	3.810	.36
2 1/2	2.895	4.500	.35	-	-	1/8	3/4	1/2	4.500	.51
3	3.550	5.000	.38	-	-	1/8	3/4	3/4	5.000	.70
4	4.550	6.250	.59	-	-	1/8	7/8	3/4	6.250	.90
5	5.610	7.500	.81	-	-	9/64	1	1	7.680	1.30
6	6.650	8.620	.95	-	-	9/64	1	1	8.650	1.50
8	8.690	10.750	1.20	-	-	3/16	1	1	10.650	2.90
10	10.840	12.750	1.50	-	-	3/16	1 1/4	1 1/4	13.270	4.60
12	12.840	14.750	2.60	-	-	1/4	1 1/2	1 1/2	15.780	8.40
14	14.090	-	-	17.060	5.30	1/4	1 1/2	1 1/2	17.060	9.40
16	16.090	-	-	19.060	6.00	1/4	1 1/2	1 1/2	19.060	10.80
18	18.125	-	-	21.060	6.70	1/4	1 1/2	1 1/2	21.060	11.50
20	20.125	-	-	23.090	7.40	1/4	1 1/2	1 1/2	23.090	13.00
24	24.125	-	-	27.090	8.80	1/4	2	2	28.090	21.10
30	30.160	-	-	34.090	14.70	1/4	2	2	34.090	25.90
36	36.160	-	-	40.090	17.40	1/4	2	2	40.090	30.90

