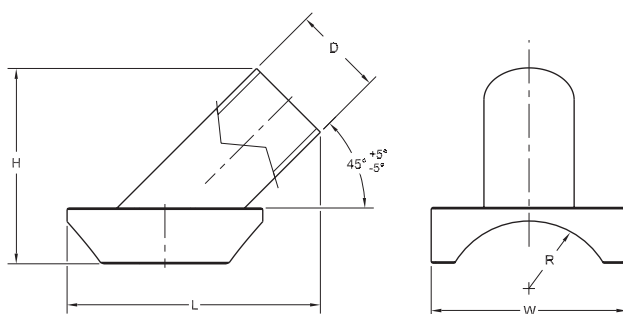


Electrofusion Fittings: WYE

NOTE: Non-Pressure Applications Only



ELECTROFUSION WYE DIMENSIONS

Nominal Base Size	A	D	H	W	L
8" IPS W/4" Outlet	*	4.50	15.00	14.37	19.50
8" IPS W/6" Outlet	*	6.63	15.00	14.37	19.50
10" IPS - 4" Outlet	*	4.50	15.00	14.37	19.50
10" IPS - 6" Outlet	*	6.63	15.00	14.37	19.50
12" IPS - 4" Outlet	*	4.50	15.00	14.37	19.50
12" IPS - 6" Outlet	*	6.63	15.00	14.37	19.50

(PE3408/PE4710) ELECTROFUSION WYE

Outlet Size	Main Size	Pin Type	Clamp Type	Part Number	Pack. Qty.	Wt.	AWWA
4" IPS	8" IPS	4.7 S	0	call	-	-	-
4" IPS	10" IPS	4.7 S	0	call	-	-	-
4" IPS	12" IPS	4.7 S	0	call	-	-	-
6" IPS	8" IPS	4.7 S	0	10002998	1	17.02	-
6" IPS	10" IPS	4.7 S	0	10003000	1	15.06	-
6" IPS	12" IPS	4.7 S	0	call	1	15.70	-

Call for availability of other sizes and dimensions.

4.7R = 4.7 Pin with Resistor

4.7S = 4.7 Solid Pin