

MODEL

SS-8 STAINLESS STEEL FLEXIBLE COUPLING

The Model SS-8 is a flexible coupling designed for a variety of general service and specialty applications. The SS-8 is supplied standard in CF8 (304) and CF8M

(316) with 304 or 316 bolts and nuts. SS-8 couplings should always be installed so that the coupling bolt pads make metal to metal contact.



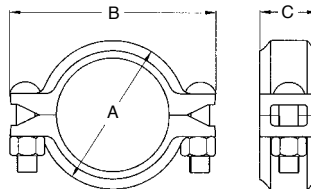
Pressure-Temperature Rating

Nom. Rating	Working Pressure (S40S, Roll-grooved)	Max. Service Temperature
Class 150	300 psi @100°F 20 Bar @38°C	EPDM: 230°F / 110°C Nitrile: 180°F / 82°C

•The working pressure shown is based on roll-grooved Sch. 40S pipe. Apply 110% for cut-grooved Sch. 40S pipe. Apply 80% for roll-grooved Sch. 10S pipe and 50% for roll-grooved Sch. 5S pipe.

•Proof test pressure: 1.5 times the working pressure, non-shock cold water.

•Burst pressure is engineered minimum 3 times the working pressure.



Nominal Size mm / in	Pipe O. D. mm / in	Pipe End Separation mm / in	Dimensions			Deflection Degree (°)	Bolt Size in	Weight Kgs / Lbs
			A mm / in	B mm / in	C mm / in			
25	33.4	0 - 1.6	55.7	87.5	44.0	2° - 45'	5/16 x 1 1/2	0.5
1	1.315	0 - 0.06	2.19	3.45	1.73			1.1
32	42.2	0 - 1.6	64.6	97.8	44.0	2° - 10'	5/16 x 1 1/2	0.5
1 1/4	1.660	0 - 0.06	2.54	3.85	1.73			1.1
40	48.3	0 - 1.6	70.8	105.1	44.0	1° - 54'	5/16 x 1 1/2	0.5
1 1/2	1.900	0 - 0.06	2.79	4.14	1.73			1.1
50	60.3	0 - 1.6	83.0	124.0	44.0	1° - 31'	3/8 x 2	0.7
2	2.375	0 - 0.06	3.28	4.88	1.73			1.5
65	73.0	0 - 1.6	96.2	139.9	44.0	1° - 15'	3/8 x 2	0.8
2 1/2	2.875	0 - 0.06	3.79	5.51	1.73			1.8
76.1mm	76.1	0 - 1.6	99.0	145.0	44.0	1° - 12'	3/8 x 2	0.8
	3.000	0 - 0.06	3.91	5.71	1.73			1.8
80	88.9	0 - 1.6	111.0	157.0	44.0	1° - 02'	3/8 x 2	1.0
3	3.500	0 - 0.06	4.39	6.18	1.73			2.2
100	114.3	0 - 3.2	143.0	200.0	50.0	1° - 36'	1/2 x 3	1.7
4	4.500	0 - 0.13	5.62	7.87	1.97			3.7
139.7mm	139.7	0 - 3.2	171.0	231.0	50.0	1° - 18'	1/2 x 3	2.2
	5.500	0 - 0.13	6.73	9.09	1.97			4.8
125	141.3	0 - 3.2	170.8	226.1	50.0	1° - 18'	1/2 x 3	2.2
5	5.563	0 - 0.13	6.72	8.90	1.97			4.8
165.1mm	165.1	0 - 3.2	194.0	253.0	53.0	1° - 07'	1/2 x 3	2.7
	6.500	0 - 0.13	7.67	9.96	2.09			5.9
150	168.3	0 - 3.2	198.0	253.1	53.0	1° - 05'	1/2 x 3	2.9
6	6.625	0 - 0.13	7.80	9.96	2.09			6.4
200	219.1	0 - 3.2	255.0	337.0	62.0	0° - 50'	5/8 x 3 1/2	6.4
8	8.625	0 - 0.13	10.04	13.27	2.44			14.1
200 JIS	216.3	0 - 3.2	251.0	346.0	60.0	0° - 51'	5/8 x 3 1/2	5.1
	8.516	0 - 0.13	10.00	13.62	2.40			11.3