

## Fig. 258

### Pipe Saddle Support

**Size Range:** 4" through 36"

**Material:** Cast iron saddle through 12", 14" through 36" carbon steel saddle.  
4" through 12" steel saddle available on special request.

**Finish:** Plain or Galvanized

**Service:** Stanchion type support for **stationary** pipe.

**Approvals:** Complies with Federal Specification A-A-1192A (Type 36),  
WW-H-171-E (Type 36 & 37), ANSI/MSS SP-69 and MSS SP-58 (Type 36).

**Installation:** Slip saddle base into riser pipe.

**Ordering:** Specify size to be supported, figure number, name, finish and material.

**Order Separately:** Figure 63P Square Cut End Stanchion. Specify "H" and pipe size to be supported by Figure 258.



Fig. 258 Cast

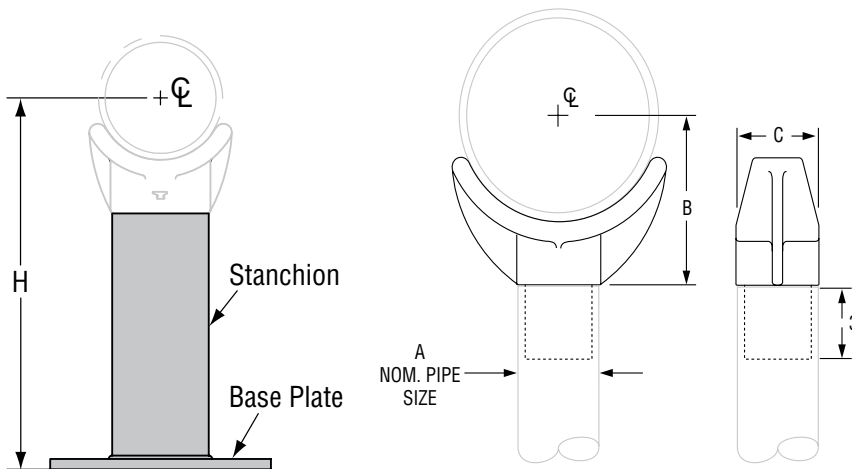


Fig. 63, Type P

Square Cut End for use with Figure 258 or 259 Pipe Saddle Support



Fig. 258 Fabricated Steel

### FIG. 258: WEIGHTS (LBS) • DIMENSIONS (IN)

| Pipe Size | Weight | A | B                               | Width C                       | Max Load |
|-----------|--------|---|---------------------------------|-------------------------------|----------|
| 4         | 9.1    | 3 | 4 <sup>3</sup> / <sub>16</sub>  | 3 <sup>5</sup> / <sub>8</sub> | 3,800    |
| 5         | 10.8   |   | 4 <sup>13</sup> / <sub>16</sub> |                               |          |
| 6         | 11.8   |   | 5 <sup>7</sup> / <sub>16</sub>  |                               |          |
| 8         | 14.3   |   | 6 <sup>15</sup> / <sub>16</sub> |                               |          |
| 10        | 19.3   |   | 8 <sup>7</sup> / <sub>16</sub>  |                               |          |
| 12        | 23.1   |   | 9 <sup>15</sup> / <sub>16</sub> |                               |          |
| 14        | 15.0   | 4 | 10 <sup>1</sup> / <sub>2</sub>  | 4                             | 5,300    |
| 16        | 16.0   |   | 11 <sup>1</sup> / <sub>2</sub>  |                               |          |
| 18        | 23.0   |   | 13 <sup>1</sup> / <sub>2</sub>  | 5                             | 7,300    |
| 20        | 24.0   |   | 14 <sup>1</sup> / <sub>2</sub>  |                               |          |
| 22        | 26.0   |   | 15 <sup>1</sup> / <sub>2</sub>  |                               |          |
| 24        | 30.0   |   | 17 <sup>1</sup> / <sub>2</sub>  |                               |          |
| 26        | 32.0   |   | 18 <sup>1</sup> / <sub>2</sub>  |                               |          |
| 30        | 41.0   |   | 20 <sup>5</sup> / <sub>8</sub>  |                               |          |
| 32        | 42.0   |   | 21 <sup>5</sup> / <sub>8</sub>  | 8 <sup>3</sup> / <sub>4</sub> |          |
| 36        | 46.0   |   | 23 <sup>5</sup> / <sub>8</sub>  |                               |          |

\*Standard Wall Pipe The above load ratings are applicable to the saddle only and are not applicable to the stanchion or other means used to support the saddle.