

MODEL

# C723 BRONZE MECHANICAL TEE FOR COPPER TUBING (CTS)

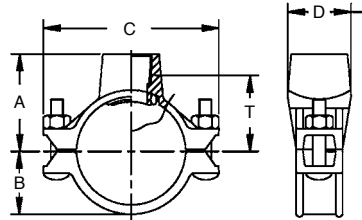
The **Shurjoint** Model C723 provides a fast, easy and reliable branch connection from copper tubing (CTS). The fitting consists of a bronze upper housing, ductile iron lower housing, o-ring and carbon steel track bolts

and nuts. The fitting is available with a female threaded outlet, NPT or BSPT.

## Pressure-Temperature Rating

Nom. Rating	Working Pressure	Test Pressure @73°F / 23°C	Max. Service Temperature
Class 150	300 psi @100°F 20 Bar @38°C	450 psi 32 Bar	EPDM: 230°F / 110°C

\*Working pressure is for connection with Type K copper tubing.  
\*Proof test pressure: 1.5 times the working pressure, non-shock cold water.  
\*Burst pressure is engineered minimum 3 times the working pressure.



Nominal Size mm / in	Hole Dia. +1.6, -0 / +0.063, -0 mm / in	Dimensions					Bolt Size in	Weight Kgs / Lbs
		A mm / in	B mm / in	C mm / in	D mm / in	T* mm / in		
65 x 20	30	66	40	118	44	52	3/8 x 2 1/2	0.7
2 1/2 x 3/4	1.18	2.60	1.57	4.65	1.73	2.05	3/8 x 2 1/2	1.5
65 x 25	30	66	40	118	44	49	3/8 x 2 1/2	0.7
2 1/2 x 1	1.18	2.60	1.57	4.65	1.73	1.93	3/8 x 2 1/2	1.5
65 x 32	45	73	40	118	63	55	3/8 x 2 1/2	1.0
2 1/2 x 1 1/4	1.77	2.87	1.57	4.65	2.48	2.15	3/8 x 2 1/2	2.2
80 x 20	30	73	45	130	44	58	3/8 x 2 1/2	0.7
3 x 3/4	1.18	2.87	1.77	5.12	1.73	2.28	3/8 x 2 1/2	1.5
80 x 25	30	73	45	130	44	56	3/8 x 2 1/2	0.8
3 x 1	1.18	2.87	1.77	5.12	1.73	2.20	3/8 x 2 1/2	1.8
80 x 32	45	84	45	130	63	66	3/8 x 2 1/2	1.0
3 x 1 1/4	1.77	3.31	1.77	5.12	2.48	2.59	3/8 x 2 1/2	2.2
100 x 20	30	86	60	158	44	71	3/8 x 2 1/2	0.8
4 x 3/4	1.18	3.39	2.36	6.22	1.73	2.80	3/8 x 2 1/2	1.8
100 x 25	30	86	60	158	44	79	3/8 x 2 1/2	0.8
4 x 1	1.18	3.39	2.36	6.22	1.73	3.11	3/8 x 2 1/2	1.8
100 x 32	45	97	60	158	63	79	3/8 x 2 1/2	0.8
4 x 1 1/4	1.77	3.81	2.36	6.22	2.48	3.11	3/8 x 2 1/2	1.8

\*T: Take-out, Center of run to engaged pipe end (approx.)



**CAUTION** Use a torque wrench and tighten the nuts to an approx. torque value of 5 ~ 9 lbs-ft (7 ~ 12 N-m). Excess torque may cause joint failure.