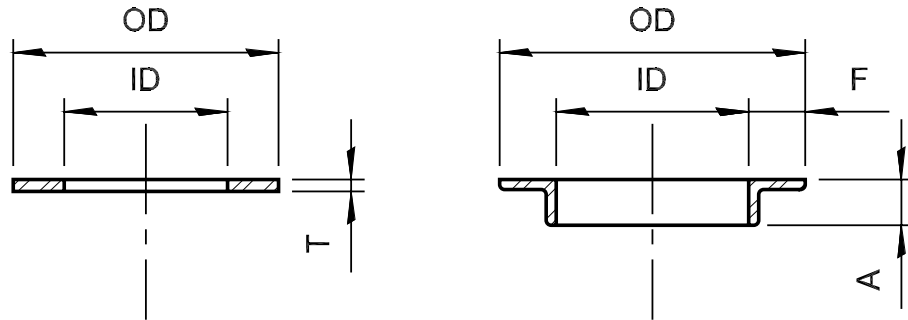


FACE RINGS

316L STAINLESS STEEL

- Dimensions are given in inches.
- For 14" and larger product, please refer to the appropriate pipe section in the front of the catalog.



NOMINAL TUBE SIZE	ID	FLAT FACE RINGS		ANGLE FACE RINGS				
		T 10GA (.140)		T	F	A	OD	LBS
		OD	LBS					
1 1/2	1.520	3.000	.38	1/8	3/4	1/2	3.180	.27
2	2.020	4.000	.58	1/8	15/16	1/2	3.810	.38
2 1/2	2.520	4.500	.35	1/8	7/8	3/4	4.250	.55
3	3.050	5.000	.38	1/8	1	11/16	5.000	.65
4	4.050	6.250	.59	1/8	1 1/8	3/4	6.250	.93
5	5.050	7.500	.99	9/64	1	1	7.000	1.20
6	6.050	8.630	1.20	9/64	1	1	8.000	1.40
8	8.060	10.750	1.60	3/16	1	1	10.020	2.60
10	10.090	12.750	2.00	3/16	1 1/4	1 1/4	12.530	4.20
12	12.090	14.750	2.50	1/4	1 1/2	1 1/2	15.030	7.90



TUBE