

# HANGER RODS

**Fig. 140: Right-hand Threads**

**Fig. 253: Right and Left hand Threads**

**Machine Threaded Rods Threaded Both Ends**

**Size Range:** 3/8" through 5"

**Material:** Carbon steel

**Finish:** Plain or Galvanized

**Ordering:** Specify rod size, figure number, name, rod length and finish. Specify thread length if other than standard.

**Note:** The acceptability of galvanized coatings at temperatures above 450°F is at the discretion of the end user.

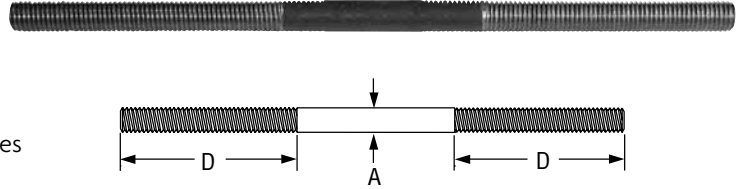


FIG. 140, 253: LOADS (LBS) • DIMENSIONS (IN)				
Rod Size A	Threads per Inch	Max Load		Standard Rod Thread Length D*
		650° F	750° F	
3/8	16	730	572	2 1/2
1/2	13	1,350	1,057	
5/8	11	2,160	1,692	
3/4	10	3,230	2,530	3
7/8	9	4,480	3,508	3 1/2
1	8	5,900	4,620	4
1 1/4	7	9,500	7,440	5
1 1/2	6	13,800	10,807	6
1 3/4	5	18,600	14,566	7
2	4 1/2	24,600	19,265	8
2 1/4	4 1/2	32,300	25,295	9
2 1/2	4	39,800	31,169	10

FIG. 140, 253: LOADS (LBS) • DIMENSIONS (IN) (CONT.)				
Rod Size A	Threads per Inch	Max Load		Standard Rod Thread Length D*
		650° F	750° F	
2 3/4	4	49,400	38,687	11
3	4	60,100	47,066	12
3 1/4	4	71,900	56,307	13
3 1/2	4	84,700	66,331	14
3 3/4	4	98,500	77,139	15
4	4	113,400	88,807	
4 1/4	4 UN	129,400	101,337	18
4 1/2	4 UN	146,600	114,807	
4 3/4	4 UN	164,700	128,982	
5	4 UN	184,000	144,096	

\*Fig. 140 rod up to 1" rod size and 24" in length may be furnished as Fig 146 rod unless order states that all thread rod is not acceptable.

\*3/8"- 4" Diameter: UNC-2A CLASS fit.

**Fig. 248: Right Hand Threads**

**Fig. 248L: Left Hand Threads**

**Eye Rod Not Welded**

**Size Range:** 3/8" through 2 1/2"

**Material:** Carbon steel

**Finish:** Plain or Galvanized.

**Maximum Temperature:** 650° F

**Features:** Through 1 1/2", inside diameter of eye will accommodate a bolt diameter 1/8" larger than rod diameter; 1 3/4" and larger, inside diameter of eye will take a bolt diameter 1/4" larger than rod diameter.

**Ordering:** Specify rod diameter, figure number, name, rod length and finish. Specify thread length if other than standard.

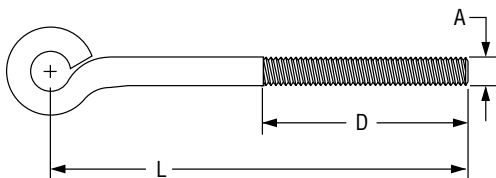


FIG. 248, FIG. 248L: LOADS (LBS) • DIMENSIONS (IN)			
Rod Size A	Standard Rod Thread Length – D	L (min)	Max Load 650° F
3/8	2 1/2	4 1/4	240
1/2		4 1/2	705
5/8		5 1/2	1,050
3/4	3	6 1/2	1,470
7/8	3 1/2	7 1/4	1,940
1	4	8 1/4	3,120
1 1/4	5	10	4,650
1 1/2	6	12	6,380
1 3/4	7	14	8,280
2	8	15 1/2	10,900
2 1/4	9	17	13,400
2 1/2	10		