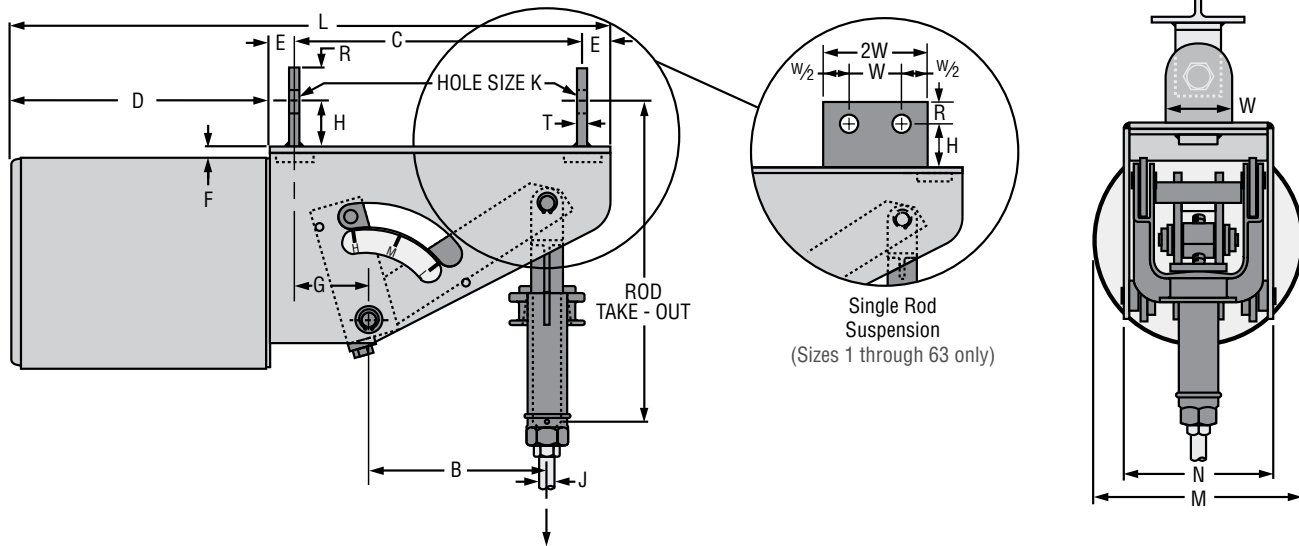


# CONSTANT SUPPORTS

## Fig. 81-H Type B

Model R



**Type B** is furnished with two lugs – one at each end of the hanger frame. These lugs permit use of Fig. 66 welded beam attachments, clevises or angle clips for attachment where headroom is limited. Sizes 1 to 9 are furnished with swivel eye and turnbuckle instead of yoke and coupling.

**Notes:** Also available for single rod suspension as indicated above. When ordering specify “for single rod suspension.” See load travel tables, page 160 through 163 for “B” dimension. For weights see page 178. Location of travel indicator and contour of side plate may vary from that shown.

### FIG. 81-H TYPE B: DIMENSIONS (IN)

Hanger Sizes	D	E	F	G	H	M	N	Total Travel TT	L	C	Factors	J-Rod		
												Min Thd Length	Rod Dia.	
													Min	Max
1 - 9	8¼	1¼	7/8	1¾	1½	6⅞	4⅞	4 or less	16¼	5½	14⅝	1¾ + TT	½	½
								4½ or more	20¼	9½	17¾			
10 - 18	8⅞	1¼	½	2⅝	1½	8⅝	6⅞	5 or less	18⅞	7½	13⅞	1¾ + TT	½	¾
								5½ or more	21⅞	10½	15⅞			
19 - 34	14⅞	1⅝	5/8	3¾	2	12⅞	8⅞	5 or less	26⅞	9¾	19⅞	2⅝ + TT	½	1¼
								5½ or more	31⅞	13⅞	22			
35 - 49	17⅞	2	1⅞	4½	3	13¾	9⅞	6 or less	31⅞	10½	25⅞	3¼ + TT	½	1¾
								6½ or more	39⅞	18½	30⅞			
50 - 63	26⅞	3	1⅞	6⅞	4	17⅞	11¼	8 or less	45⅞	13⅞	30⅞	4¼ + TT	¾	2¼
								8½ to 11	53⅞	21⅞	30⅞			
64 - 74	35¾	¾	¾	5	4½	22⅞	11	11½ or more	53⅞	21⅞	36	5¼ + TT	1¼	2¾
								10½ or less	57½	15¼	42⅞			
75 - 83	35¾	¾	3⅝	4¾	5	27⅞	11	10½ or less	57½	14¾	45¾	5¼ + TT	1½	3¼**
								11 or more	63	20¾	45⅞			
84 - 110	See page 177													

\* Rod take-out = (factor) - (TT / 2), for lever in high position.

### J-ROD AND K-HOLE SELECTION CHART

Load (lbs)	0 800	801 1,500	1,501 2,540	2,541 4,000	4,001 6,100	6,101 9,400	9,401 13,400	13,401 18,300	18,301 24,700	24,701 31,000	31,001 39,000	39,001 48,000	48,001 58,000
J-rod	½	5/8	¾	1	1¼	1½	1¾	2	2¼	2½	2¾	3	3¼**
K-Hole Size	1⅞	1⅞	1⅞	1¼	1½	1¾	2	2⅞	2⅞	2⅞	3⅞	3⅞	3⅞
R	1¼	1¼	1¼	1½	2	2½	2½	3	3	4	4	4	4½
T	¼*	¼*	3/8	½	5/8	¾	¾	¾	¾	1	1	1	1
W	2½	2½	2½	3	4	5	5	6	6	8	8	8	9

\* ¾" for single rod suspension \*\* 3¼" is furnished with 4 UN series thread.