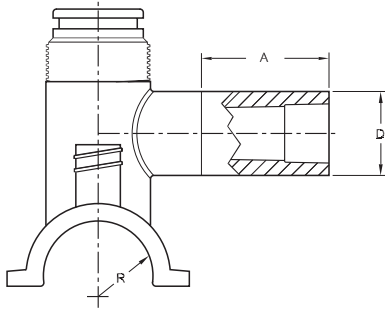


## Electrofusion Fittings: Tapping Tee Trainers

At GF Central Plastics, we make every effort to manufacture the very best products, but they are only to be installed by properly trained and qualified workers. It is the employer's responsibility to provide their workers with both the proper fusion equipment and sufficient training to install the fittings correctly and safely. Tapping Tee Trainers do not have cutters or caps. They are only to be used to qualify an installers adherence to established installation procedures.



(PE2406/PE2708) ELECTROFUSION TAP TEE TRAINER w/Butt Outlet

Outlet Size	Main Size	Cutter Size Material	Pin Type	Clamp Type	Part Number	Pack. Qty.	Wt.
½" CTS	2" IPS	n/a	4.7 R	B	5757147	50	0.49
1" CTS	2" IPS	n/a	4.7 R	B	5757146	50	0.48
1" IPS	1¼" IPS	n/a	4.7 R	A	5757154	50	0.48
1" IPS	2" IPS	n/a	4.7 R	B	5757148	50	0.50
1" IPS	4" IPS	n/a	4.7 R	D	5757166	50	0.57
1" IPS	6" IPS	n/a	4.7 R	E	5757165	50	0.57

(PE3408/PE4710) ELECTROFUSION TAP TEE TRAINER w/Butt Outlet

Outlet Size	Main Size	Cutter Size Material	Pin Type	Clamp Type	Part Number	Pack. Qty.	Wt.
1" IPS	2" IPS	n/a	4.7 R	B	10004808	50	0.49
1" IPS	2" IPS	n/a	4.7 R	Underpart	10009396		

Call for availability of other sizes and dimensions.

4.7R = 4.7 Pin with Resistor

4.7S = 4.7 Solid Pin