

Fig. 137C: Plastic Coated

U-Bolts

Size Range: 1/2" through 8"

Material: Carbon steel U-bolt and four finished hex nuts. Formed portion of the U-bolt is plastic coated.

Maximum Temperature: 225° F

Service: Recommended for support or guide for glass, copper, brass and aluminum pipe.

Approvals: Complies with Federal Specification A-A-1192A (Type 24), WW-H-171-E (Type 24), ANSI/MSS SP-69 and MSS SP-58 (Type 24).

Ordering: Specify pipe size x rod size (e.g., 2 x 3/8), figure number and name. If hex nuts are not required, specify "without hex nuts".

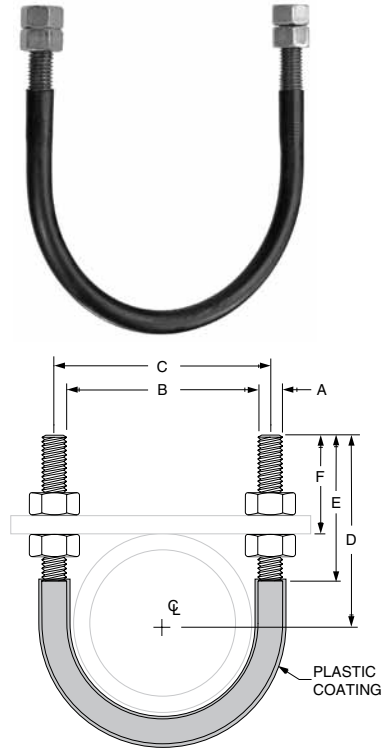


FIG. 137C: LOADS (LBS) • WEIGHTS (LBS) • DIMENSIONS (IN)								
Pipe Size	Rod Size A	Max Load	Weight	B	C	D	E	F
1/2	1/4	580	0.11	15/16	13/16	23/4	21/8	25/16
3/4			0.12	17/8	13/8			27/32
1			0.12	13/8	15/8			23/32
1 1/4	3/8	1,460	0.28	111/16	2	27/8	21/2	21/32
1 1/2			0.30	2	23/8	3		21/16
2			0.33	27/16	213/16	3 1/4		2 1/16
2 1/2	1/2	2,700	0.73	215/16	37/16	3 3/4	3	25/16
3			0.78	39/16	41/16	4		2 1/4
3 1/2			0.84	41/16	49/16	4 1/4		2 1/4
4			0.90	49/16	51/16	4 1/2		2 1/4
5			1.00	55/8	61/8	5		2 7/32
6	5/8	4,320	2.00	63/4	73/8	6 1/8	3 3/4	2 13/16
8			2.30	83/4	93/8	7 1/8		2 13/16

Fig. 120

Light Weight U-Bolt

Size Range: 1/2" through 10"

Material: Carbon steel

Finish: Plain or Galvanized

Service: Recommended for support, or guide of relatively light loads. Normally used with two hex nuts.

Maximum Temperature: 650° F.

Ordering: Specify pipe size x rod size, figure number and name. Hex nuts must be ordered separately.

Note: The acceptability of galvanized coatings at temperatures above 450°F is at the discretion of the end user.

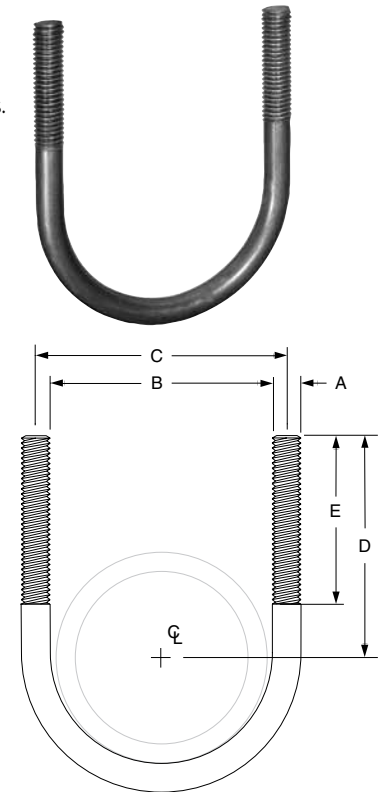


FIG. 120: LOADS (LBS) • WEIGHTS (LBS) • DIMENSIONS (IN)							
Pipe Size	Max Load	Weight	Rod Size A	B	C	D	E
1/2	580	0.06	1/4	15/16	13/16	115/16	1 3/4
3/4		0.07		17/8	13/8	21/16	
1		0.07		13/8	15/8	23/16	
1 1/4		0.08		111/16	15/16	23/8	
1 1/2		0.09		2	21/4	27/16	
2		0.10		27/16	211/16	211/16	
2 1/2	1,460	0.28	3/8	215/16	35/16	31/16	2
3		0.31		39/16	315/16	33/8	
3 1/2		0.35		41/16	47/16	35/8	
4		0.38		49/16	415/16	37/8	
5		0.45		55/8	6	49/16	
6	2,700	0.95	1/2	63/4	71/4	51/16	2 1/4
8		1.20		83/4	91/4	61/16	
10		4,320		2.30	5/8	107/8	