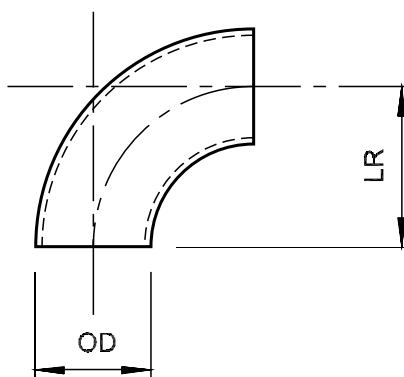


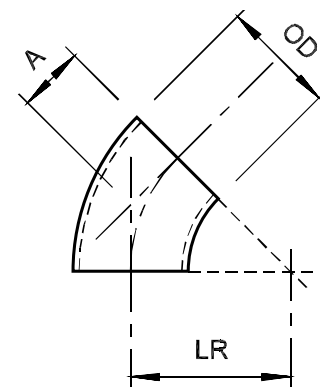
90° & 45° ELBOWS LR

304L & 316L STAINLESS STEEL

- Manufactured in accordance to ASTM A-774 specifications.
- OD and wall thickness are given in inches.
- Available end configurations are described in the specifications section on page 43.
- For 14" and larger product, please refer to the appropriate pipe size section in the front of the catalog.



90° ELBOW



45° ELBOW

NOMINAL TUBE SIZE	OD	LR	A-774 90° ELBOWS	
			14GA .078	12GA .109
3	3.000	4.500	1.50	2.20
4	4.000	6.000	2.70	3.50
5	5.000	7.500	3.40	6.00
6	6.000	9.000	6.20	8.60
8	8.000	12.000	10.90	15.30
10	10.000	15.000	17.10	23.80
12	12.000	18.000	24.60	34.30

NOMINAL TUBE SIZE	OD	LR	A	A-774 45° ELBOWS	
				14GA .078	12GA .109
3	3.000	4.500	2.000	.77	1.10
4	4.000	6.000	2.500	1.40	1.90
5	5.000	7.500	3.125	2.10	3.00
6	6.000	9.000	3.750	3.10	4.30
8	8.000	12.000	5.000	5.50	7.60
10	10.000	15.000	6.250	9.00	12.40
12	12.000	18.000	7.500	12.60	17.60

TUBE

