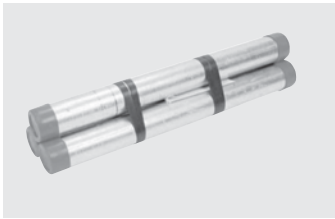


PRE-CUT PIPE

STANDARD WELDED STEEL



1-1/4"

Galvanized Part No.	Black Part No.	Description	Weight Approx. (Lbs.)	Inner Box	Master Ctn.	Inner/Master Wt.(Lbs.)
566-180	586-180	1-1/4" x 18"	3.42	3	-	10.3
566-240	586-240	1-1/4" x 24"	4.55	3	-	13.7
566-300	586-300	1-1/4" x 30"	5.69	3	-	17.1
566-360	586-360	1-1/4" x 36"	6.83	3	-	20.5
566-480	586-480	1-1/4" x 48"	9.11	3	-	27.3
566-600	586-600	1-1/4" x 60"	11.39	3	-	34.2
566-720	586-720	1-1/4" x 72"	13.67	3	-	41.0

1-1/2"

Galvanized Part No.	Black Part No.	Description	Weight Approx. (Lbs.)	Inner Box	Master Ctn.	Inner/Master Wt.(Lbs.)
567-180	587-180	1-1/2" x 18"	4.08	3	-	12.2
567-240	587-240	1-1/2" x 24"	5.44	3	-	16.3
567-300	587-300	1-1/2" x 30"	6.80	3	-	20.4
567-360	587-360	1-1/2" x 36"	8.16	3	-	24.5
567-480	587-480	1-1/2" x 48"	10.88	3	-	32.7
567-600	587-600	1-1/2" x 60"	13.60	3	-	40.8
567-720	587-720	1-1/2" x 72"	16.33	3	-	49.0

2"

Galvanized Part No.	Black Part No.	Description	Weight Approx. (Lbs.)	Inner Box	Master Ctn.	Inner/Master Wt.(Lbs.)
568-180	588-180	2" x 18"	5.48	3	-	16.4
568-240	588-240	2" x 24"	7.31	2	-	14.6
568-300	588-300	2" x 30"	9.14	2	-	18.3
568-360	588-360	2" x 36"	10.97	2	-	21.9
568-480	588-480	2" x 48"	14.62	2	-	29.2
568-600	588-600	2" x 60"	18.28	2	-	36.6

Cut Pipe in
2-1/2", 3" & 4"
available upon request

TUBE & PIPE

METAL FITTINGS
& NIPPLES

PLASTIC FITTINGS
& NIPPLES

VALVES

FAUCETS & BATH
ACCESSORIES

SPECIALTIES

