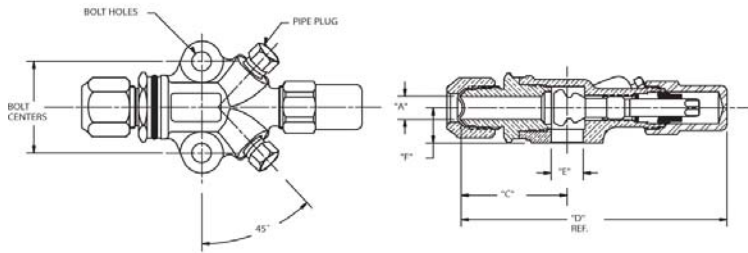
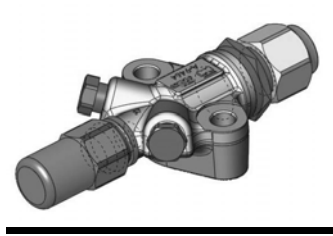


# Brass Compressor Valves

## Double Port, 45° Flare

### Features:

- Maximum working pressure (PS): 700 psig, 48 bar
- Working temperature range (TS): -40°F/300°F, -40°C/149°C
- Compatible with all CFC, HCFC and HFC refrigerants and oils
- UL/cUL Recognized, CE Certified
- 100% tested
- Asbestos-free valve packing
- Valve openings designed for maximum flow and minimum pressure drop



### References

- \* Valve kit includes valve, gasket and bolts
- \*\* Replacement kit contains components to pack stem (pack gland, packing and pack washer)
- \*\*\* Cap and cap gasket kit
- \*\*\*\* Seal cap and o-ring kit
- \*\*\*\*\* O-ring included

### Dimensions

Valve Part Number	Valve Kit *	A (in)	C (in)	D (in)	E (in)	F (in)	Bolt Centers (in)	Bolt Hole Diameter (in)	Pipe Plug Size (in)	Flange Thickness (in)	Seat Position	Valve Wt (lb)	Kit Wt (lb)
A 16302	A 17518	3/8	1.73	4.45	0.56	0.62	1 5/8	.34	1/8	7/8	Mid	1.20	1.24
A 16303	A 17519	1/2	1.86	4.67	0.56	0.62	1 5/8	.34	1/8	7/8	Mid	1.17	1.17
A 16304	A 17520	5/8	1.99	4.80	0.56	0.62	1 5/8	.34	1/8	7/8	Mid	1.23	1.27

### Metric Dimensions

Valve Part Number	Valve Kit *	A (mm)	C (mm)	D (mm)	E (mm)	F (mm)	Bolt Centers (mm)	Bolt Hole Diameter (mm)	Pipe Plug Size (in)	Flange Thickness (mm)	Seat Position	Valve Wt (kg)	Kit Wt (kg)
A 16302	A 17518	10	44	113	14	10	41	9	1/8	22	Mid	0.54	0.56
A 16303	A 17519	13	47	119	14	13	41	9	1/8	22	Mid	0.53	0.53
A 16304	A 17520	16	51	122	14	16	41	9	1/8	22	Mid	0.56	0.58

### Torque To Seal

Front Seat		Back Seat		Pack Gland		Pipe Plug	Plastic Cap	Brass Cap		Steel Cap		Cast Iron Cap
ft-lb	N-m	ft-lb	N-m	ft-lb	N-m			ft-lb	N-m	ft-lb	N-m	
14 - 18	19 - 24	14 - 18	19 - 24	8 - 12	11 - 16	2 - 3 Threads Exposed	NA	20 - 30	27 - 41	3 - 5	4 - 7	NA

### References

Valve Part Number	Body	Standard Seal Cap				Replacement Seal Cap				Replacement Kit**	Valve Kit *	Manufacturer Reference	
		Material	Seal Cap	Gasket	O-ring Kit	Plastic	Brass***	Steel	Cast Iron			Carrier	Copeland
A 16302	A 09464	Steel	A 04566			P 34627	A 04597	A 04566		A 17420	A 17518	998-0510-15	
A 16303	A 09464	Steel	A 04566			P 34627	A 04597	A 04566		A 17420	A 17519	998-0510-16	
A 16304	A 09464	Steel	A 04566			P 34627	A 04597	A 04566		A 17420	A 17520	998-0510-17	



RoHS Compliant. Comply with ISO 9001 Standards.

12/9/2010

121 Rogers Street • Hartsville, TN 37074  
 (800) 251-8983 or (615) 374-2124  
 FAX (800) 529-0884 or (615) 374-0932

www.muellerindustries.com