

## ASP-MG24 / ASP-MG24TDB

- Four White / Pink Noise Generators & 2 Mic / Line Inputs with 4-Channel DSP Processor
- Generator Spectral Purity ( $\pm 0.1\text{dB}$  @ 0Hz – 20 kHz)
- Precision Pink Noise Filtering (-3dB per octave low-pass)
- Extended “Non-Apparent” Repeat Time of Noise (200 Minutes)
- Combined 1/3-Octave & Parametric Equalization per Channel
- Selectable High & Low Frequency Shelving Filters per Channel
- High Pass Filter & Low Pass Filter with Variable Frequency & Slope per Channel
- Leveling, Compression, Limiting, & Soft-Gating per Channel for use with Paging Input
- Output Delay, with Distance / Delay Calculation, per Channel
- Independent Matrixes for Channel-To-Channel Mixing
- Variable Noise, Input, and Output Levels with Software Metering
- Thirty Non-Volatile Memory Presets Store / Recall Settings
- Balanced Inputs & Outputs
- Programming Software Included
- No Manual Controls on Front Panel, to Prevent Tampering
- Remote Control via USB, RS-232, Ethernet & Accessory Control Panel
- Incorporates AES Recommended Grounding Practices
- UL / ULC Listed External Power Supply

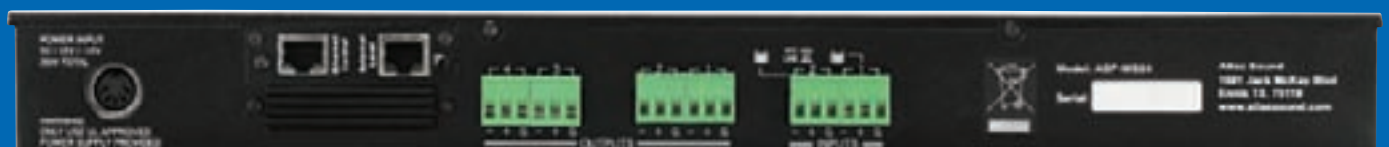
ASP-MG24 represents the latest technology in digital signal processing (DSP) engines for sound masking generator/equalizers. This model features 4 built-in digital noise generators and two analog inputs specifically suited for paging input sources. These inputs can be configured for mic or line level.

The ASP-MG24 advances sound masking control to a whole new level while providing the secondary benefit of loudspeaker processing for the most popular Atlas Sound loudspeaker systems.

### Consultant on Sound Masking for Atlas Sound – Dr. Robert Chanaud

He has authored several masking software programs including SCOPE, which provides detailed speech privacy analyses of planned open and closed offices under a variety of conditions. The program also is used to evaluate the privacy of existing offices and is used to provide the optimum background sound. As a consultant to Atlas Sound, he has been instrumental in developing new products for sound masking applications including the ASP-MG24.

Dr. Chanaud owns a number of patents and has authored many technical articles on office acoustics and masking sound systems. You can find many of these articles at [AtlasSound.com](http://AtlasSound.com)



(Back)

The ASP-MG24 is a 1 RU, 6 input x 4 output DSP configurable by a very intuitive set-up GUI. Four inputs are tied to independent white / pink noise generators with adjustable ramp-up time to allow gradual acclimation to masking levels. Two additional inputs are available for mic or line sources to allow paging and/or music sources to be blended with the masking sources to any of the 4 outputs. This 6 x 4 mix matrix provides the following configuration options for sound masking systems:

1. 1, 2, 3, or 4 Channel Masking
2. Dual Two Channel Masking
3. Single Channel Paging
4. Dual Channel Paging (From Single Page Input Source)
5. 1, 2, 3, or 4 Channel Mixed Paging & Masking
6. Dual Channel Mixed Paging & Masking

Dedicated  $\frac{1}{3}$  octave filter sets are available for each of the 4 generator outputs, 8 band parametric EQ blocks along with dynamic control are available for each of the two mic/line inputs. Any mix of all 6 inputs may be easily matrixed to the 4 output DSP blocks for additional parametric equalization, delay, and limiting (if required).

Factoring in all features, a very complex 4-zone sound masking system can be easily configured with 2 external music or page sources.

For loudspeaker control functionality, the ASP-MG24 may be configured in 2 input x 4 output mode for stereo full range. Other configurations include full range plus sub operation with Atlas Sound FAP Series ceiling speakers, SM Series surface mount speakers, or AH Series stadium horns for complete control of crossover types, equalization, delay, and dynamic control.

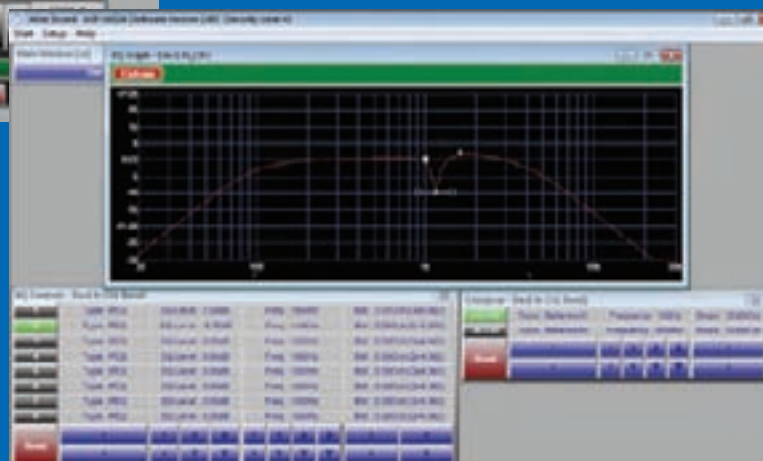
Computer interface is simplified by USB or RS-232 connection (no awkward USB to Serial adaptors required!). External UL / ULC Listed international voltage power supply is included.

### ASP-MG24TDB

ASP-MT24TDB incorporates all the features of the standard model with the addition of time / date level control of all 4 masking inputs for holiday and weekend scheduling. This powerful scheduling tool ensures maximum speech privacy in facilities that may be more or less densely occupied during various times of the day or days of the week. Ethernet control functionality is also incorporated into this model to provide control of multiple units (up to 32) via a standard network switch and also allows remote access and monitoring via LAN.



Main Screen



EQ Section

#### Sound Masking Done Right



The comprehensive guide to Sound Masking Design and installation. Written by Dr. Robert Chanaud. Available exclusively from Atlas Sound, call 800.876.3333 to order.