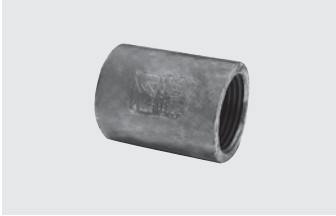


## COUPLING • MERCHANT

## MALLEABLE IRON



Galvanized Part No.	Black Part No.	Size	Inner/Master Carton Qty.	Master Weight (lbs.)
511-220	521-220	1/8"	60/720	23
511-221	521-221	1/4"	60/720	54
511-222	521-222	3/8"	50/600	58
511-223	521-223	1/2"	40/480	101
511-224	521-224	3/4"	50/300	85
511-225	521-225	1"	25/150	50
511-226	521-226	1-1/4"	16/128	64
511-227	521-227	1-1/2"	18/72	44
511-228	521-228	2"	12/48	40
511-229	—	2-1/2"	NA/16	40
511-230	—	3"	NA/12	41
511-231	—	4"	NA/7	31

## CAP

## MALLEABLE IRON



Galvanized Part No.	Black Part No.	Size	Inner/Master Carton Qty.	Master Weight (lbs.)
511-400	521-400	1/8"	100/1200	42
511-401	521-401	1/4"	75/900	56
511-402	521-402	3/8"	60/720	64
511-403	521-403	1/2"	75/450	58
511-404	521-404	3/4"	40/240	51
511-405	521-405	1"	35/140	46
511-406	521-406	1-1/4"	25/100	49
511-407	521-407	1-1/2"	25/75	47
511-408	521-408	2"	18/54	51
511-409	521-409	2-1/2"	NA/24	38
511-410	521-410	3"	NA/16	38
511-411	521-411	4"	NA/10	41
511-413	521-413	6"	NA/5	44

## PLUG

## MALLEABLE IRON



Galvanized Part No.	Black Part No.	Size	Inner/Master Carton Qty.	Master Weight (lbs.)
511-800	521-800	1/8"	225/2700	52
511-801	521-801	1/4"	150/1800	54
511-802	521-802	3/8"	100/1200	63
511-803	521-803	1/2"	25/600	51
511-804	521-804	3/4"	15/360	50
511-805	521-805	1"	20/240	59
511-806	521-806	1-1/4"	40/120	48
511-807	521-807	1-1/2"	30/90	48
511-808	521-808	2"	30/60	50
511-809	521-809	2-1/2"	NA/32	37
511-810	521-810	3"	NA/24	43
511-811	521-811	4"	NA/16	45
511-813	521-813	6"	NA/10	71