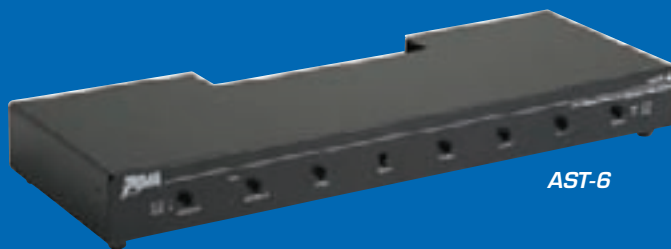




ASL-6A



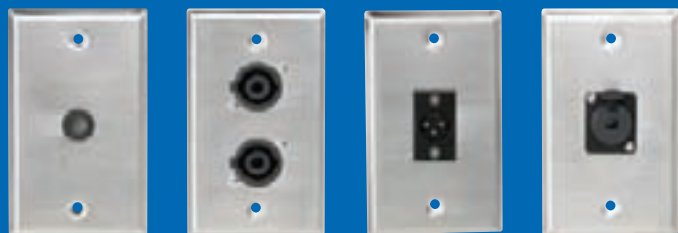
AST-6

## Impedance-Matching Speaker Switching Systems

For use with 8Ω Applications Only, NOT FOR USE WITH 70.7V SYSTEMS.

### ASL-6A

Impedance-matching loudspeaker switching system provides control of up to six loudspeaker pairs positioned in multiple room applications. All volume controls for each loudspeaker pair are located on the front panel for easy access. Attenuation is accomplished in 10 steps. **Units accommodate any combination of 8Ω and/or 16Ω loudspeakers.** Choose ASL-6A to control speakers in retrofit or pre-wire installations where speaker wiring goes directly to the main equipment cabinet; not to individual volume controls. ASL model offers individual speaker volume controls with individual A/B source selection and separate On / Off controls for each loudspeaker pair. Unit features a mar-resistant black finish. Dimensions are 17" Width x 1½" Height x 5⅞" Depth and can be shelf or 19" rack-mounted (brackets included). Wire capacity is 14-gauge – 24-gauge.



SG-38GH

SG-NL4MP-2

SG-XLR-M1

SG-QTRSL-F1

### Wall Plates with Connectors

#### Single Gang Stainless Steel Wall Plates

Professional appearance with easy and cost-efficient installation, Atlas Sound wall plates are offered in nine models with a variety of industry standard connectors. Models include mounting holes on standard box mount center [3⅜" (83mm)] and plate mounting hardware.

Model	Description
SG-XLR-F1	(1) Female 3 pin XLR
SG-XLR-F2	(2) Female 3 pin XLR
SG-XLR-M1	(1) Male 3 pin XLR
SG-XLR-M2	(2) Male 3 pin XLR
SG-NL4MP-1	(1) NL4MP 4-Pole connector
SG-NL4MP-2	(2) NL4MP 4-Pole connector
SG-QTRSL-F1	(1) Female Locking TRS connector
SG-QTRSL-F2	(2) Female Locking TRS connector
SG-38GH	3/8" Hole & Grommet

### AST-6

Impedance-matching loudspeaker switching system provides control of up to six loudspeaker pairs positioned in multiple room applications. Controls for each loudspeaker pair are located on the front panel for easy access. Unit accommodates any combination of 8Ω and/or 16Ω loudspeakers. Use AST Series to offer additional functionality to systems using traditional (non-WhisperTouch®) volume controls such as the DAT8ST. AST devices include separate on / off controls for each loudspeaker pair and one A-B source selector switch for overall system control. Units feature a mar-resistant black finish. Dimensions are 17" Width x 1½" Height x 5⅞" Depth and can be shelf or 19" rack-mounted (brackets included). Wire capacity is 14-gauge – 24-gauge.



FBR4XLRF



FB4CPB

### Microphone Floor Box

FB4XLRF floor box assembly provides a simple solution for recessed mic inputs. The unit is designed for easy installation into wood stages and platforms. Four female XLR connectors are recessed and slant loaded into the enclosure. A hinged steel cover plate provides protection for cable connectors. Connectors are standard "D Sub" type and may be easily removed to allow substitution of other "D Sub" devices. Connector pocket requires 5" square floor cutout. Trim plate dimensions are 8" square. For new or retrofit concrete floor installation use optional enclosure model FB4CPB.