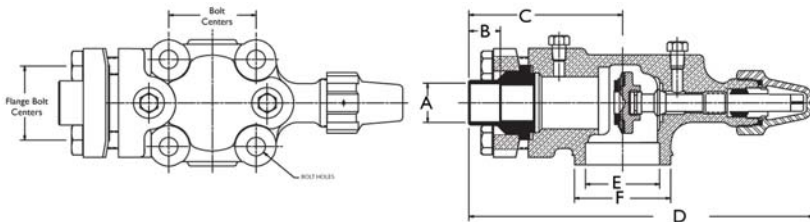


Cast Iron Compressor Valves

Four-Bolt Flange Union, Solder

Features:

- Maximum working pressure (PS): 700 psig, 48 bar
- Working temperature range (TS): -40°F/300°F, -40°C/149°C
- Compatible with all CFC, HCFC and HFC refrigerants and oils
- UL/cUL Recognized, CE Certified
- 100% tested
- Asbestos-free valve packing
- Valve openings designed for maximum flow and minimum pressure drop



References

- * Valve kit includes valve, gasket and bolts
- ** Replacement kit contains components to pack stem (pack gland, packing and pack washer)
- *** Seal cap and o-ring kit

Dimensions

Valve Part Number	Valve Kit *	A (in)	B (in)	C (in)	D (in)	E (in)	F (in)	Bolt Centers (in)	Bolt Hole Dia(in)	Pipe Plug Size (in)	Flange Bolt Centers (in)	Seat Position	Valve Wt (lb)
A 15246		1 5/8	1.09	3.95	9.47	2.12	2.75	2.5	.53	1/4	2.12	Mid	9.37
A 16321	A 17513	1 5/8	1.09	4.59	10.04	2.12	2.75	2.5	.53	1/4	2.12	Front	8.71
B 32337		1 5/8	1.09	3.95	9.47	2.12	2.75	2.5	.53	1/4	2.12	Front	9.07
A 15586	A 17535	2 1/8	1.31	5.06	11.95	2.53	3.22	3.06	.69	1/4	3.06	Mid	18.28
A 16324	A 17523	2 1/8	1.31	5.06	11.95	2.53	3.22	3.06	.69	1/4	3.06	Front	18.28
B 33572		2 1/8	1.31	5.06	11.95	2.53	3.22	3.06	.69	1/4	3.06	Front	17.49
B 34671		2 1/8	1.31	5.10	11.99	2.53	3.22	3.06	.69	1/4	3.06	Front	17.28
A 15587		2 5/8	1.27	5.02	12.07	2.53	3.22	3.06	.69	1/4	3.06	Mid	20.30
A 16366	A 17522	2 5/8	1.47	6.49	15.12	3.35	4.16	3.88	.69	1/4	3.88	Front	33.18
B 33568		2 5/8	1.27	5.02	11.90	2.53	3.22	3.06	.69	1/4	3.06	Front	20.23
B 34661		2 5/8	1.47	6.49	15.12	3.35	4.16	3.88	.69	1/4	3.88	Front	30.80
A 15588		3 1/8	1.22	5.94	14.60	3.35	4.16	3.88	.69	1/4	3.88	Mid	33.22
A 16365	A 17521	3 1/8	1.22	5.94	14.60	3.35	4.16	3.88	.69	1/4	3.88	Front	33.22
B 33569		3 1/8	1.22	5.94	14.60	3.35	4.16	3.88	.69	1/4	3.88	Front	32.38
A 17496		3 5/8	2.06	7.00	16.30	3.55	4.55	4.25	.69	1/4	4.25	Mid	34.01
B 33788		3 5/8	2.06	7.00	16.30	3.88	4.55	4.25	.69	1/4	4.25	Front	34.01
B 34670		3 5/8	2.06	7.00	16.30	3.89	4.55	4.25	.69	1/4	4.25	Front	40.51
A 15589		4 1/8	1.97	7.22	17.50	4.38	5.13	4.81	.8125	1/4	4.81	Mid	49.80

Torque To Seal

Front Seat		Back Seat		Pack Gland		Pipe Plug in-lbs	Plastic Cap	Steel Cap	Cast Iron Cap
ft-lb	N-m	ft-lb	N-m	ft-lb	N-m				
45 - 65	61 - 88	45 - 65	61 - 88			240 - 300	Hand Tight	Hand Tight	Hand Tight



RoHS Compliant. Comply with ISO 9001 Standards.

121 Rogers Street • Hartsville, TN 37074
 (800) 251-8983 or (615) 374-2124
 FAX (800) 529-0884 or (615) 374-0932

12/9/2010

www.muellerindustries.com