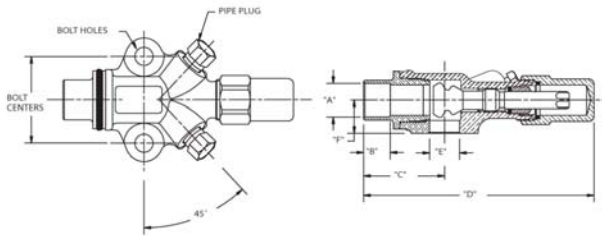
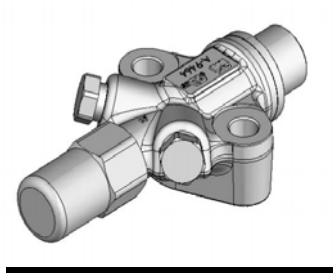


# Brass Compressor Valves

## Double Port, Solder

### Features:

- Maximum working pressure (PS): 700 psig, 48 bar
- Working temperature range (TS): -40°F/300°F, -40°C/149°C
- Compatible with all CFC, HCFC and HFC refrigerants and oils
- UL/cUL Recognized, CE Certified
- 100% tested
- Asbestos-free valve packing
- Valve openings designed for maximum flow and minimum pressure drop



### References

- \* Valve kit includes valve, gasket and bolts
- \*\* Replacement kit contains components to pack stem (pack gland, packing and pack washer)
- \*\*\* Cap and cap gasket kit
- \*\*\*\* Seal cap and o-ring kit
- \*\*\*\*\* O-ring included

### Dimensions

Valve Part Number	Valve Kit *	A (in)	B (in)	C (in)	D (in)	E (in)	F (in)	Bolt Centers (in)	Bolt Hole Diameter (in)	Pipe Plug Size (in)	Flange Thickness (in)	Seat Position	Valve Wt (lb)	Kit Wt (lb)
A 16307	A 17510	3/8	0.31	1.27	4.07	0.56	0.62	1 5/8	.34	1/8	7/8	Front	0.69	0.73
A 16308	A 17511	1/2	0.38	1.40	4.20	0.56	0.62	1 5/8	.34	1/8	7/8	Front	0.86	0.90
A 16309	A 17512	5/8	0.50	1.52	4.32	0.56	0.62	1 5/8	.34	1/8	7/8	Front	0.88	0.92
A 16309	A 17531	5/8	0.50	1.52	4.32	0.56	0.62	1 5/8	.34	1/8	7/8	I Turn off Back	0.88	0.93

### Metric Dimensions

Valve Part Number	Valve Kit *	A (mm)	B (mm)	C (mm)	D (mm)	E (mm)	F (mm)	Bolt Centers (mm)	Bolt Hole Diameter (mm)	Pipe Plug Size (in)	Flange Thickness (mm)	Seat Position	Valve Wt (kg)	Kit Wt (kg)
A 16307	A 17510	10	8	32	103	14	10	41	9	1/8	22	Front	0.31	0.33
A 16308	A 17511	13	10	36	107	14	13	41	9	1/8	22	Front	0.39	0.41
A 16309	A 17512	16	13	39	110	14	16	41	9	1/8	22	Front	0.40	0.42
A 16309	A 17531	16	13	39	110	14	16	41	9	1/8	22	I Turn off Back	0.40	0.42

### Torque To Seal

Front Seat		Back Seat		Pack Gland		Pipe Plug	Plastic Cap	Brass Cap		Steel Cap		Cast Iron Cap
ft-lb	N-m	ft-lb	N-m	ft-lb	N-m			ft-lb	N-m	ft-lb	N-m	
14 - 18	19 - 24	14 - 18	19 - 24	8 - 12	11 - 16	2 - 3 Threads Exposed	NA	20 - 30	27 - 41	3 - 5	4 - 7	NA

### References

Valve Part Number	Body	Material	Standard Seal Cap				Replacement Seal Cap				Replacement Kit**	Valve Kit *	Manufacturer Reference	
			Seal Cap	Gasket	O-ring	Kit	Plastic	Brass***	Steel	Cast Iron			Carrier	Copeland
A 16307	A 09464	Steel	A 04566				P 34627	A 04597	A 04566		A 17420	A 17510		998-0510-04
A 16308	A 09464	Steel	A 04566				P 34627	A 04597	A 04566		A 17420	A 17511		998-0510-05
A 16309	A 09464	Steel	A 04566				P 34627	A 04597	A 04566		A 17420	A 17512		998-0510-06
A 16309	A 09464	Steel	A 04566				P 34627	A 04597	A 04566		A 17420	A 17531	06DA660-060	



RoHS Compliant. Comply with ISO 9001 Standards.

12/9/2010

121 Rogers Street • Hartsville, TN 37074  
 (800) 251-8983 or (615) 374-2124  
 FAX (800) 529-0884 or (615) 374-0932

www.muellerindustries.com