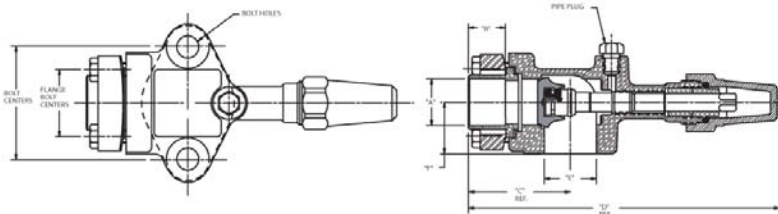
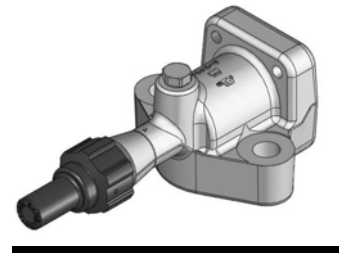


Brass Compressor Valves

Flange Union, Solder

Features:

- Maximum working pressure (PS): 700 psig, 48 bar
- Working temperature range (TS): -40°F/300°F, -40°C/149°C
- Compatible with all CFC, HCFC and HFC refrigerants and oils
- UL/cUL Recognized, CE Certified
- 100% tested
- Asbestos-free valve packing
- Valve openings designed for maximum flow and minimum pressure drop



References

- * Valve kit includes valve, gasket and bolts
- ** Replacement kit contains components to pack stem (pack gland, packing and pack washer)
- *** Cap and cap gasket kit
- **** Seal cap and o-ring kit
- ***** O-ring included

Dimensions

Valve Part Number	Valve Kit *	A (in)	B (in)	C (in)	D (in)	E (in)	F (in)	Bolt Centers (in)	Bolt Hole Diameter (in)	Pipe Plug Size (in)	Flange Bolt Centers	Flange Thickness (in)	Seat Position	Valve Wt (lb)	Kit Wt (lb)
A 16313		3/4	0.62	2.31	7.33	1.25	1.25	2 3/4	.531	1/8	1.62	1	Front	3.93	
A 16314	A 17527	7/8	0.75	2.31	7.33	1.25	1.25	2 3/4	.531	1/8	1.62	1	Front	3.90	4.05
A 16315	A 17525	1 1/8	0.91	2.47	7.49	1.25	1.25	2 3/4	.531	1/8	1.62	1	Front	3.88	4.03
A 16316	A 17526	1 3/8	0.97	2.47	7.49	1.25	1.25	2 3/4	.531	1/8	1.62	1	Front	3.65	3.80

Metric Dimensions

Valve Part Number	Valve Kit *	A (mm)	B (mm)	C (mm)	D (mm)	E (mm)	F (mm)	Bolt Centers (mm)	Bolt Hole Diameter (mm)	Pipe Plug Size (in)	Flange Bolt Centers	Flange Thickness (mm)	Seat Position	Valve Wt (kg)	Kit Wt (kg)
A 16313		19	16	59	186	32	32	70	13	1/8	41	25	Front	1.78	
A 16314	A 17527	22	19	59	186	32	32	70	13	1/8	41	25	Front	1.77	1.84
A 16315	A 17525	29	23	63	190	32	32	70	13	1/8	41	25	Front	1.76	1.83
A 16316	A 17526	35	25	63	190	32	32	70	13	1/8	41	25	Front	1.66	1.72

Torque To Seal

Front Seat		Back Seat		Pack Gland		Pipe Plug	Plastic Cap	Brass Cap		Steel Cap		Cast Iron Cap
ft-lb	N-m	ft-lb	N-m	ft-lb	N-m			ft-lb	N-m	ft-lb	N-m	
30 - 40	41 - 54	22 - 45	30 - 61	15 - 25	20 - 34	2 - 3 Threads Exposed	Hand Tight	40 - 50	54 - 68	NA	NA	NA

References

Valve Part Number	Body	Standard Seal Cap			Replacement Seal Cap			Replacement Kit**	Valve Kit *	Manufacturer Reference	
		Material	Seal Cap****	Kit	Plastic****	Brass****	Steel			Cast Iron	Carrier
A 16313	A 03416	Plastic	P 34632	P 35915	P 34632	A 15099		A 17419			
A 16314	A 03416	Plastic	P 34632	P 35915	P 34632	A 15099		A 17419	A 17527		998-0510-10
A 16315	A 03416	Plastic	P 34632	P 35915	P 34632	A 15099		A 17419	A 17525		998-0510-09
A 16316	A 03416	Plastic	P 34632	P 35915	P 34632	A 15099		A 17419	A 17526		998-0510-11



RoHS Compliant. Comply with ISO 9001 Standards.

12/9/2010

121 Rogers Street • Hartsville, TN 37074
 (800) 251-8983 or (615) 374-2124
 FAX (800) 529-0884 or (615) 374-0932

www.muellerindustries.com