

Q Series Enclosures



Q408



QS408



Q4915



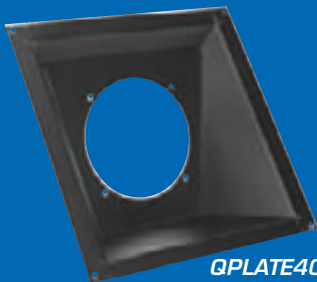
Q4712



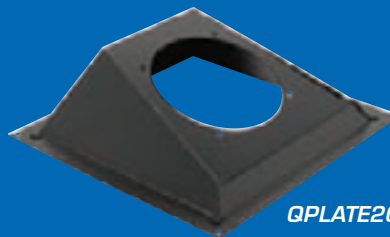
Q4612
(with QPLATE40)



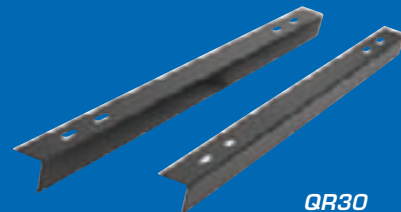
Q428-SA



QPLATE40



QPLATE20



QR30

Enclosures

Q Series assembly matches the acoustical characteristics of $\frac{3}{4}$ " (19mm) plywood, while providing the structural, economic, and code regulation benefits afforded by metal enclosures. Construction is 18-gauge CRS with formed strengthening ribs on the enclosure back. Acoustic fiberboard is permanently affixed to the inner wall surfaces of all square enclosures to eliminate hangover and vibration (cylindrical enclosures utilize undercoating). Inner walls are also lined with $1\frac{1}{2}$ " (38mm) thick fiberglass having a $1\frac{1}{2}$ lb. / ft³ density to control unwanted resonances in the high end of the frequency spectrum. Compound $\frac{1}{2}$ "- $\frac{3}{4}$ " (13mm – 19mm) conduit knockouts are furnished on all four sides to facilitate wiring. Enclosures are finished in black textured epoxy (Q428-SA is white epoxy).

Note: Recessed enclosures with a cubic content greater than 1ft³ may require optional QR Series mounting angles.

Surface Mount Enclosure with Premounted CRS Baffle

Q428-SA. Convenient assembly is 1 $\frac{1}{2}$ ft³ with $\frac{1}{2}$ " thick fiber board. Package includes above specifications and premounted baffle (included) is recessed into the enclosure for flush appearance. Back plate is removable for installation ease. Finish is textured white epoxy.

Mounting Angles

QR30. Optional angles are recommended for Q Series enclosures with a cubic content greater than 1ft³ 16-gauge CRS construction. Angles are 30" Length (762mm) and finished in black baked epoxy (1 pair).

Q Plates

Atlas Sound Q Plates allow 8" speakers to be mounted in enclosure models Q4612, Q4712 and Q4812 with 20° or 40° offset angle to compensate for angled ceilings.

QPLATE20 20° offset plate mounts 8" speakers
 QPLATE40 40° offset plate mounts 8" speakers
 12T08PLATE adapts 12" enclosure to mount 8" speakers