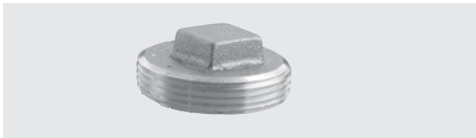


RAISED SQUARE HEAD PLUGS

BRASS



- Cored plug

Part No.	UPC-A (032888)	Size	Inner/Master Carton Qty.	Master Weight (Lbs.)
156-020	560208	1-1/4"	25/200	22
156-021	560215	1-1/2"	25/300	44
156-022	560222	2"	25/200	41
156-023	560239	2-1/2"	15/120	30
156-024	560246	3"	15/150	40
156-025	560253	3-1/2"	10/90	37
156-026	560260	4"	10/80	50

TRAP CONNECTORS

BRASS



- Chrome plated die cast nut
- Brass slip ring

Part No.	UPC-A (032888)	Size	Inner/Master Carton Qty.	Master Weight (Lbs.)
Slip x Male				
158-866	588660	1-1/4"x1-1/4"	12/72	25
158-876	588769	1-1/4"x1-1/2"	12/72	16
158-877	588776	1-1/2"x1-1/2"	12/72	30
Slip x Female				
158-966	589667	1-1/4"x1-1/4"	12/72	26
158-976	589766	1-1/4"x1-1/2"	12/72	30
158-977	589773	1-1/2"x1-1/2"	12/72	30

LEAD CLEANOUT PLUGS

IRON

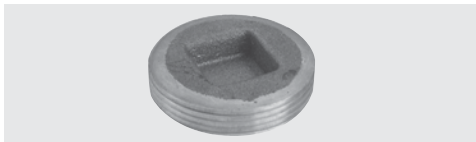


- Malleable iron core
- Square head for wrench

Part No.	UPC-A (032888)	Size	Inner/Master Carton Qty.	Master Weight (Lbs.)
156-003	560031	3"	12/24	36
156-004	560048	3-1/2"	12/24	39
156-005	560055	4"	12/24	45

COUNTERSUNK PLUGS

BRASS



- Cored plug

Part No.	UPC-A (032888)	Size	Inner/Master Carton Qty.	Master Weight (Lbs.)
156-119	561199	1"	40/160	17
156-121	561212	1-1/2"	100/400	63
156-122	561229	2"	100/200	48
156-123	561236	2-1/2"	50/200	62
156-124	561243	3"	20/160	63
156-125	561250	3-1/2"	20/120	71
156-126	561267	4"	15/90	54
156-127	561274	5"	10/60	62
156-129	561298	6"	10/40	68

TUBE & PIPE

METAL FITTINGS & NIPPLES

PLASTIC FITTINGS & NIPPLES

VALVES

FAUCETS & BATH ACCESSORIES

SPECIALTIES

