



FlameGuard™ TorqueSafe™ GASKET SEALED HEAD ADAPTER

GSA-2-0209

*The CPVC Fire Sprinkler Head Adapter
You've Been Waiting For...*



- Eliminates Radial Stress
- Requires NO Thread Sealants
- Eliminates Sealant Incompatibility
- Prevents Over Tightening
- Provides Easy Frame Alignment
- UL® Listed

Spears® TorqueSafe™ revolutionary design features a special molded-in-place Brass Thread Insert fitted with an elastomer gasket seal at the base of the threads. The gasket seal allows a modified thread design that eliminates radial stress and associated problems typical with tapered thread joint make up. The insert is designed to rotate during head installation for easy sprinkler frame alignment without over tightening!

No Sealant = No More Problem!

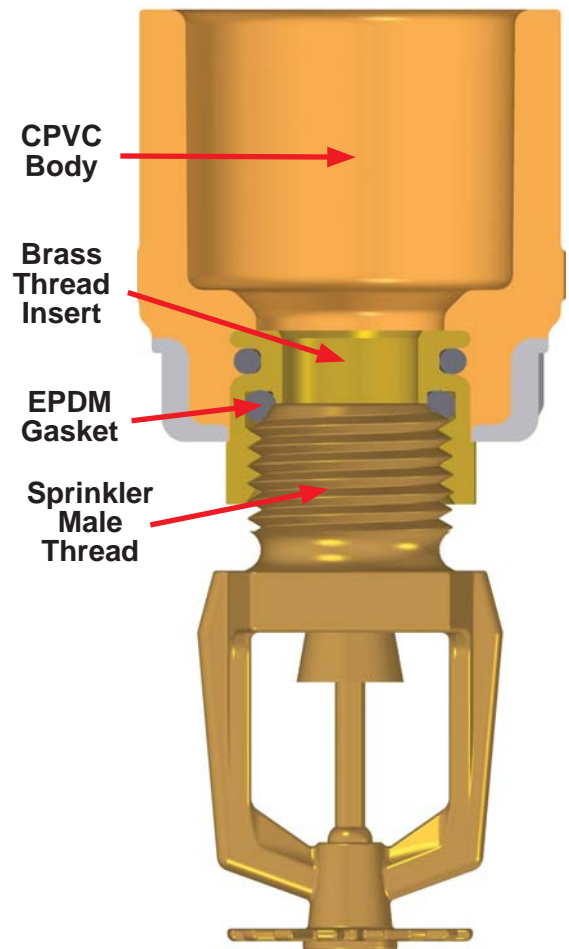
Using incompatible thread pastes and pipe dopes is the major cause of environmental stress cracking in plastics. Tape sealants are far too frequently improperly or excessively applied. These problems are fully eliminated!

NO-Stress Thread Design

The modified straight thread design is Engineered to provide a tight joint at full engagement without radial stress from tapered thread expansion. An internal gasket retaining lip serves as a positive stop against over tightening. No stress assures years of long, trouble free service.

Gasket Sealing

An EPDM gasket has been Engineered for sealing against the sprinkler head. The NPT male thread starts on all sprinkler heads provide a uniform surface for positive, reliable seal. Hundreds of tests have been performed using virtually all brands of heads and even rough, galvanized pipe nipples without any damage or loss of sealing.



Patent Pending

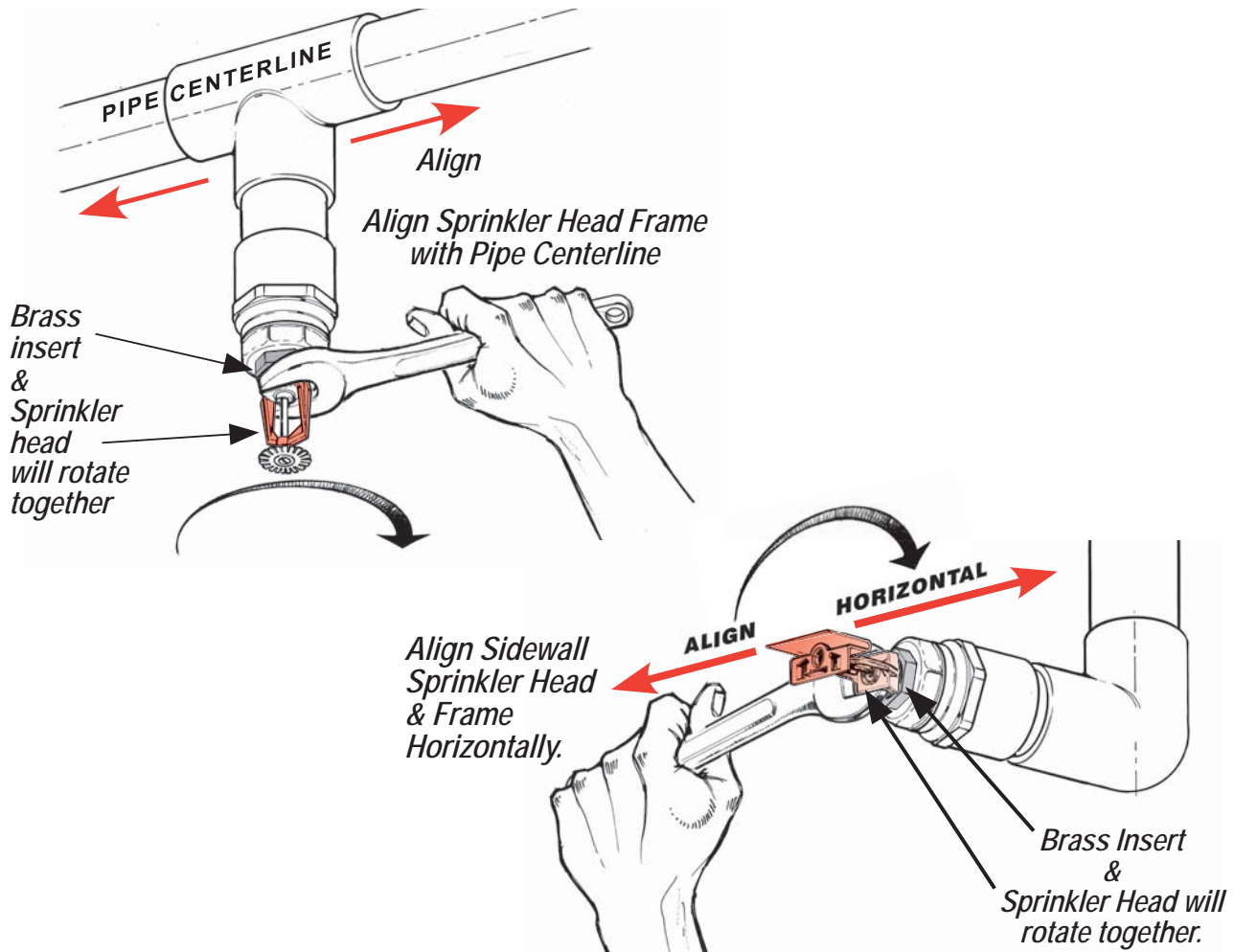
PROGRESSIVE PRODUCTS FROM SPEARS® INNOVATION & TECHNOLOGY

Visit our web site: www.spearsmfg.com

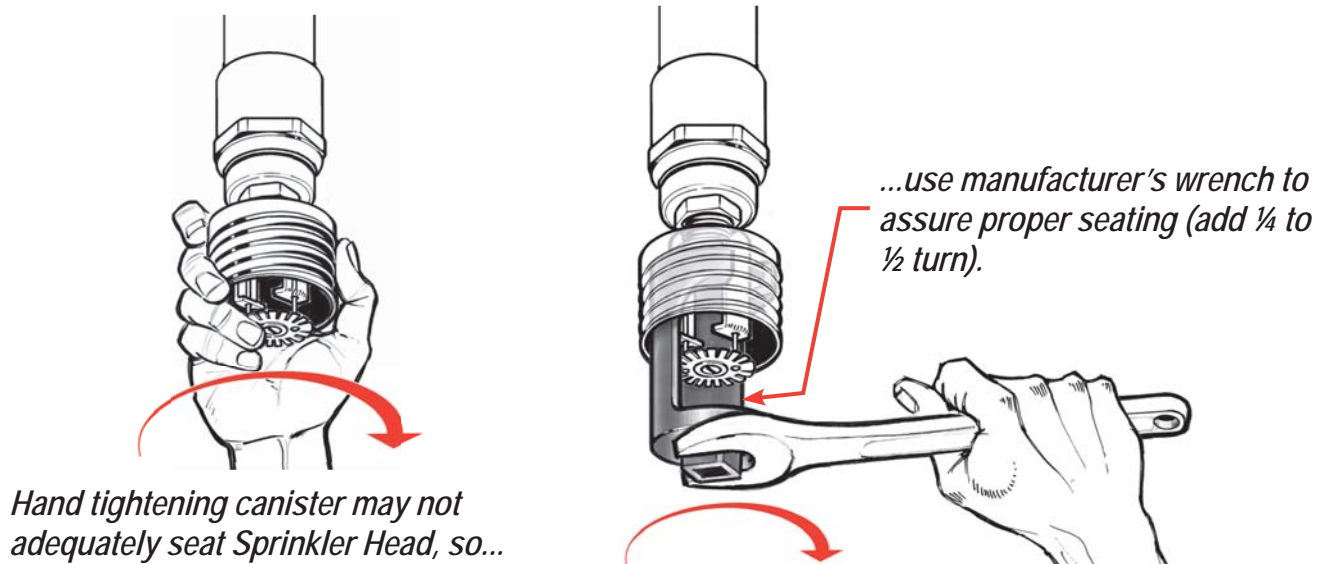
Simply Hand Install Head & Align

Install sprinkler head hand tight. Rotate sprinkler head clockwise until frame is properly aligned.

Caution: DO NOT use back-up wrench on brass insert flats.



Installing Concealed Style Sprinkler Heads



SPEARS® MANUFACTURING COMPANY CORPORATE OFFICE

15853 Olden St., Sylmar, CA 91342 • PO Box 9203, Sylmar, CA 91392
(818) 364-1611 • www.spearsmfg.com

